

REVISION HISTORY				
ECO	REV	DESCRIPTION	APP. ENG.	DATE
-	2	PRODUCTION	GORAN P.	08-12-10

LTC3786EMSE

HIGH CURRENT SINGLE OUTPUT
SYNCHRONOUS STEP-UP SUPPLY
DEMO CIRCUIT 1641A

PGOOD

E9

VBIAS

VOUT
VIN
JP3

SS

E5

CLKIN

E6

MODE

FCC
PULSE
BURST
SKIP
MODE

RUN

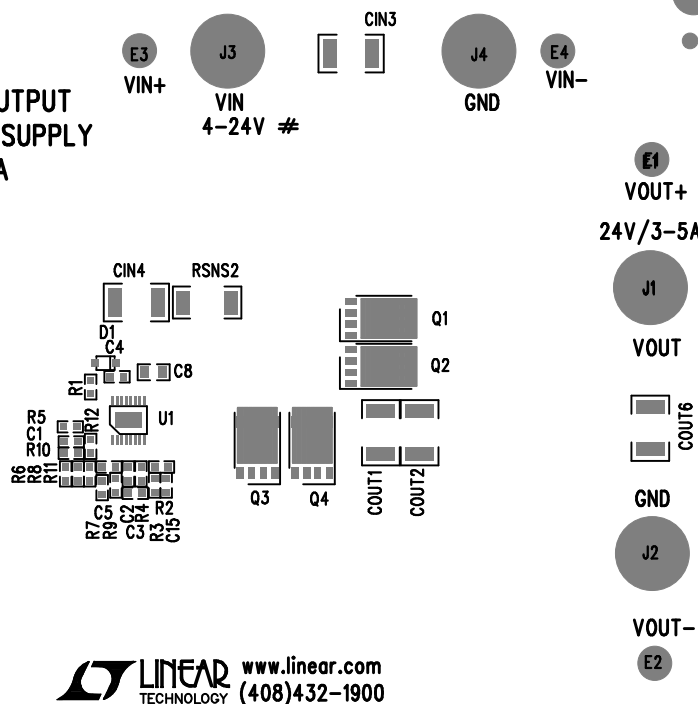
E7

JP1

RUN
ON
OFF
JP2

GND

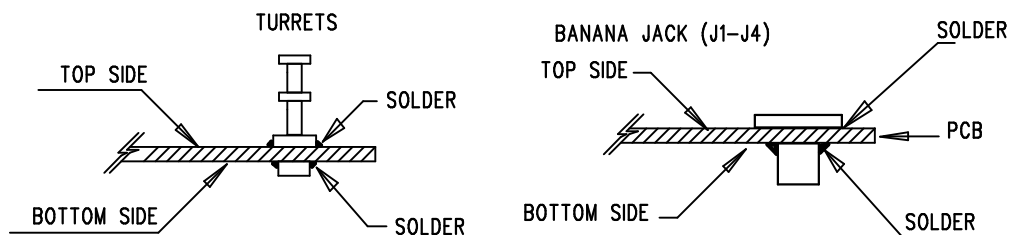
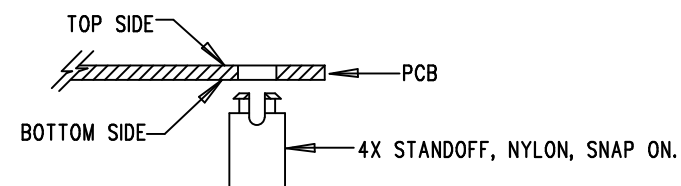
E8




LINEAR TECHNOLOGY www.linear.com
(408)432-1900

NOTES: UNLESS OTHERWISE SPECIFIED

1. WORKMANSHIP SHALL BE IN ACCORDANCE WITH IPC-A-610.
2. ASSEMBLY PROCESS SHALL INCLUDE: REFLOW SOLDER TOP SIDE SMD.
3. PARTS TO OMIT WILL BE SPECIFIED ON THE BILL OF MATERIALS. LOCATIONS OF OMITTED PARTS SHALL BE FREE OF SOLDER. MASK THE SOLDER STENCIL WHERE SMT PARTS ARE OMITTED.
4. INSTALL SHUNTS AS SHOWN ON ASSY DRAWING.
5. DEPANELIZE BOARDS AFTER ASSEMBLY AND ROUTE-OUT THE BREAKOUT TABS ON FOUR SIDES OF THE BOARD EDGE.
6. DO NOT APPLY ANY KIND OF ASSEMBLY STAMP OR QA STAMP TO ANY BOARD.
7. INSTALL 4 STANDOFFS AT 4 LOCATIONS AS SHOWN BELOW:



APPROVALS		 <div> 1630 MCCARTHY BLVD MILPITAS, CA 95035 PH: (408)432-1900 www.linear.com LTC CONFIDENTIAL- FOR CUSTOMER USE ONLY </div>	
PCB DES.	AK		
APP ENG.	GORAN P.	TITLE: TOP ASSEMBLY DRAWING HIGH CURRENT SINGLE OUTPUT SYNCHRONOUS STEP-UP SUPPLY	
		SIZE N/A	IC NO. LTC3786EMSE DEMO CIRCUIT 1641A
		REV. 2	
SCALE = NONE		FILENAME: DC1641A-1.PCB SHT 1 OF 1	