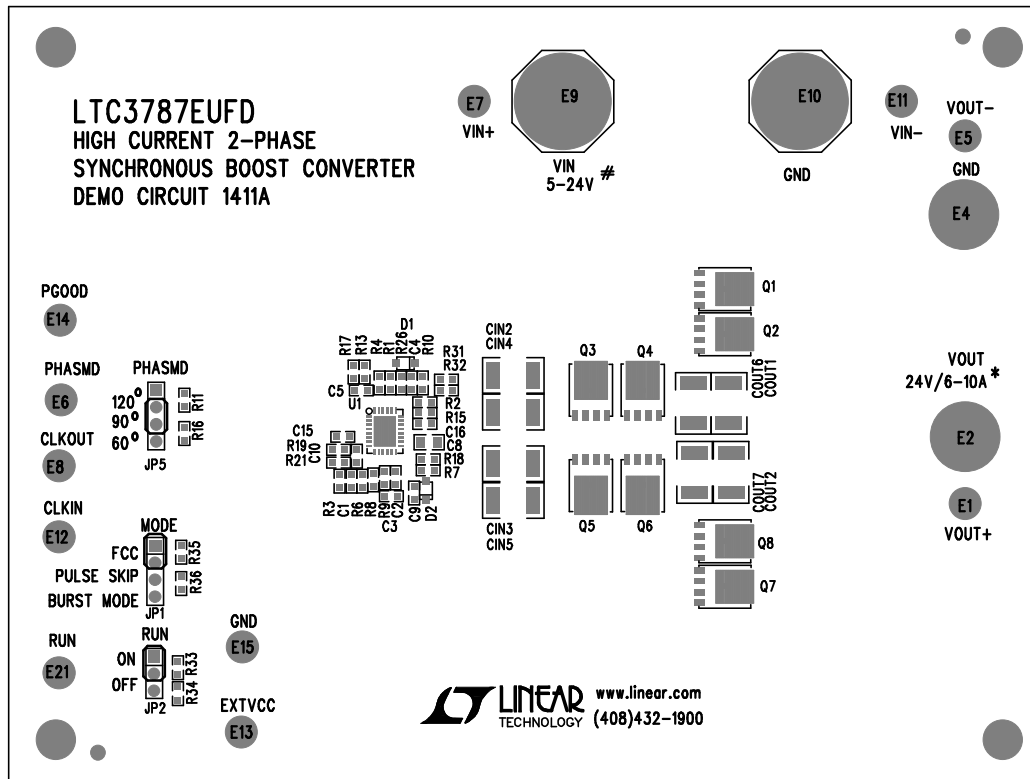
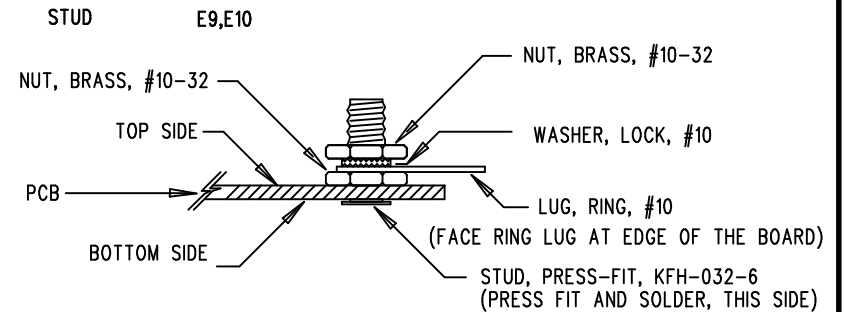
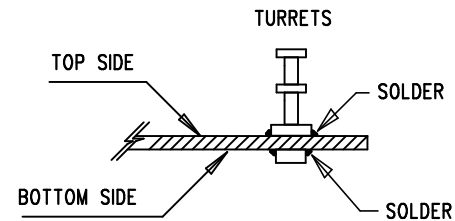


REVISION HISTORY				
ECO	REV	DESCRIPTION	APPR	DATE
-	2	PRODUCTION	GORAN P.	02-09-10

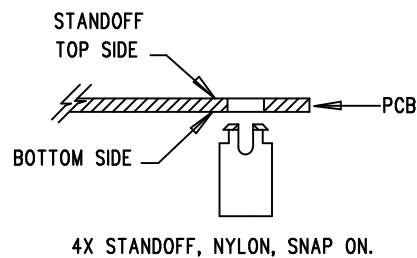
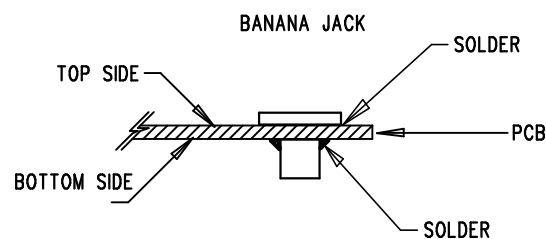
## NOTES : Unless Otherwise Specified


1. WORKMANSHIP SHALL BE IN ACCORDANCE WITH IPC-A-610.
2. INSTALL SHUNTS AS SHOWN. JP1 - FCC, JP2 - ON, JP5 - 90
3. DEPANELIZE BOARDS AFTER ASSEMBLY AND ROUTE-OUT THE BREAKOUT TABS ON FOUR SIDES OF THE BOARD EDGE.
4. ASSEMBLY PROCESS SHALL INCLUDE: REFLOW SOLDER TOP SIDE SMD.
5. INSTALL 4 STANDOFFS AT 4 CORNERS AS SHOWN BELOW:



TOP SILKSCREEN

LINEAR TECHNOLOGY  
DC1411A-LTC3787EUFD  
HIGH CURRENT 2-PHASE  
SYNCHRONOUS BOOST CONVERTER  
DATE: 02-11-10



APPROVALS		 <div> 1630 MCCARTHY BLVD MILPITAS, CA 95035 PH: (408)432-1900 www.linear.com LTC CONFIDENTIAL- FOR CUSTOMER USE ONLY </div>		
PCB DES.	A.K.			
APP ENG.	GORAN P.	TITLE: TOP ASSEMBLY DRAWING		
		HIGH CURRENT 2-PHASE SYNCHRONOUS BOOST CONVERTER		
		SIZE N/A	IC NO. LTC3787EUFD DEMO CIRCUIT 1411A	REV. 2
SCALE = NONE		FILENAME: DC1411A-2.PCB		SHT 1 OF 2