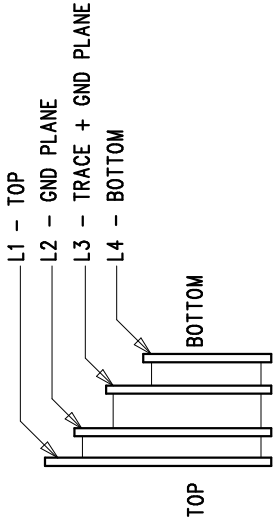
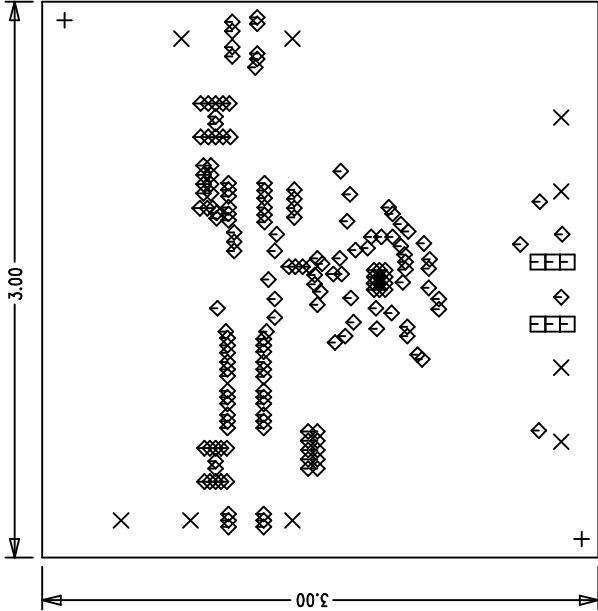
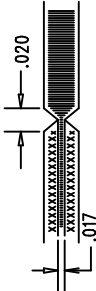


REVISION HISTORY			
ECO	REV	DESCRIPTION	APP. ENG. DATE
-	2	PRODUCTION	CHARLIE Z. 4-23-12



NOTES: UNLESS OTHERWISE SPECIFIED

1. FAB PER IPC-A-600.
2. MATERIAL: -LEAD FREE ASSEMBLY COMPLIANT, ISOLA FR-370HR OR EQUIVALENT.
 - FINISHED THICKNESS TO BE 0.062 +/- .005
 - TOTAL OF 4 LAYERS WITH 2 OZ. CU ON THE OUTER LAYERS AND 1 OZ. CU ON THE INNER LAYERS.
 - FLAMMABILITY RATING: 94 V-0 MINIMUM.
3. SIZE: CUT TO DIMENSIONS AND TOLERANCES SHOWN.
 - 0.00" ARE PRIMARY DATUMS.
4. DRILLING: -DRILL HOLES PER SCHEDULE. PLATE THROUGH HOLES WITH COPPER, 0.001" THICK MIN.
 - ALL HOLE SIZES ARE SPECIFIED AFTER PLATING.
 - HOLE LOCATION TOLERANCES ARE +/-0.003 IN RELATION TO CENTER
5. FINISH: -SMOBC USING LPI BOTH SIDES, COLOR GREEN.
 - GOLD IMMERSION BOTH SIDES.
 - FOR SILKSCREENS: USE WHITE NON-CONDUCTIVE INK.
6. DO NOT ALTER ARTWORK & q. TO ADD LOGO OR DATE CODE. PAD SIZE CAN BE MODIFIED TO MEET END FINISH.
7. PCBs ARE TO BE RoHS COMPLIANT.
8. SCORING FOR PANELIZED PCB:



SIZE	QTY	SYM	PLATED	TOL
0.07	2	+	NO	+/-0.003
0.095	9	X	YES	+/-0.003
0.031	6	□	YES	+/-0.003
0.01	177	◇	YES	+/-0.003

UNLESS OTHERWISE SPECIFIED
DIMENSIONS ARE IN INCHES
TOLERANCES:
0.XX = ± 0.01
0.XXX = ± 0.005
INTERPRET DIM AND TOL
PER ASME Y14.5M-1994
THIRD ANGLE PROJECTION

APPROVALS

PCB DES.	HZ
APP ENG.	CHARLIE Z.

1830 MCCARTHY BLVD
MILPITAS, CA 95035
PH: (408)432-9000
WWW.LINEAR.COM
LTC CONVERTER -
FOR CUSTOMER USE ONLY

TITLE: FABRICATION DRAWING
HIGH EFFICIENCY COMPACT BUCK-BOOST CONVERTER

SIZE	IC NO.	LTC3789EUF	REV
N/A	DEMO CIRCUIT	1881A	2

SCALE = NONE
FILENAME: DC1881A-2.PCB
SHT 1 OF 1