

LTC CONFIDENTIAL - For Customer Use Only

REVISION HISTORY

ECO	REV	DESCRIPTION	DATE	APPROVED
	2	PROTO	11/12/07	

NOTES: UNLESS OTHERWISE SPECIFIED,

1. ARTWORK P/N DC1168A REV 2.
2. FAB PER IPC-A-600
3. PCB SHALL MEET RoHS COMPLIANCE.
4. MATERIAL:

A. LAMINATE: EPOXY FIBERGLASS, NEMA GRADE FR-4
FLAMMABILITY RATING: 94 V-2 MINIMUM .

B. THICKNESS: 1.6 +/- 0.1 mm

C. CLAD: 2 OZ. (50um) EXTERNAL LAYERS.
1 OZ. (25um) COPPER ON TWO INTERNAL LAYERS.
5. FINISH:

A. COATING: SOLDERMASK OVER BARE COPPER,
COLOR, GREEN LPI.

B. PLATING: GOLD IMMERSION BOTH SIDES.

C. SILKSCREEN: COMPONENT SIDE WITH WHITE
NON-CONDUCTIVE INK.
6. TOLERANCES:

A. WARPAGE: (0.075mm) MAX. ALONG THE LONGEST DIAG.
AS PER IPC-TM650 METHOD 2.4.22.

B. ETCHING: +0.03mm, -0.3mm OF MASTER PATTERN.

C. REGISTRATION: 0.075mm MAX.

D. MASK THICKNESS: 0.025mm MIN., 0.075mm MAX.

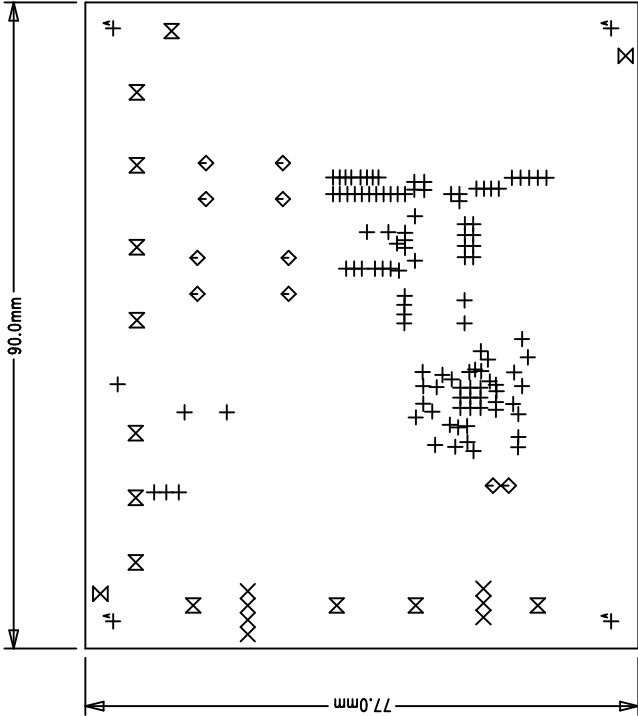
E. HOLE PLATING: 22um +/- 3um.
7. SIZE:

A. CUT TO DIMENSIONS AND TOLERANCES SHOWN.
0.00 ARE PRIMARY DATUMS.

B. HOLE DIAMETERS ARE POST-PLATED SIZES.

9. DEBURR AND BREAK ALL SHARP EDGES.

10. DO NOT ALTER ARTWORK e.g. TO ADD LOGO OR DATE CODE.



L1 - COMPONENT SIDE

- L1 - COMPONENT SIDE
- L2 - AGND/TRACE
- L3 - GND/TRACE
- L4 - BOTTOM

TOP

BOTTOM

LAYER CONSTRUCTION

SIZE	QTY	SYM	PLATED	TOL
0.25	112	+	YES	+/-0.08
0.76	7	×	YES	+/-0.08
0.9	10	◇	YES	+/-0.08
1.78	2	⊗	NO	+/-0.13
2.41	12	⊗	YES	+/-0.25
4.74	4	⊕	NO	+/-0.25

CONTRACT NO.

UNLESS OTHERWISE SPECIFIED
DIMENSIONS ARE IN MILLIMETERS
TOLERANCES ON ANGLE ±1°
.XX ± 0.25
.XXX ± 0.076

THIRD ANGLE PROJECTION	DO NOT SCALE DRAWING

APPROVALS	DATE
DRAWN MEI	09/21/06
CHECKED	
APPROVED	
DESIGNED BY	

SIZE	CAGE CODE	DWG NO.	REV
A		DC1168A	2

FAB, LTC3810EUH-5, HIGH EFFICIENCY HIGH
VOLTAGE STEP-DOWN CONVERTER



1630 McCarthy Blvd.
Milpitas, CA 95035
Phone: (408)432-1900
Fax: (408)434-0507