

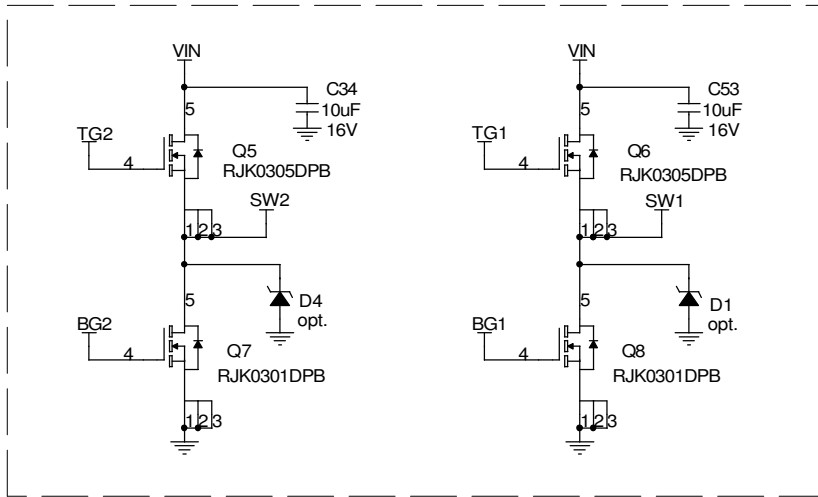
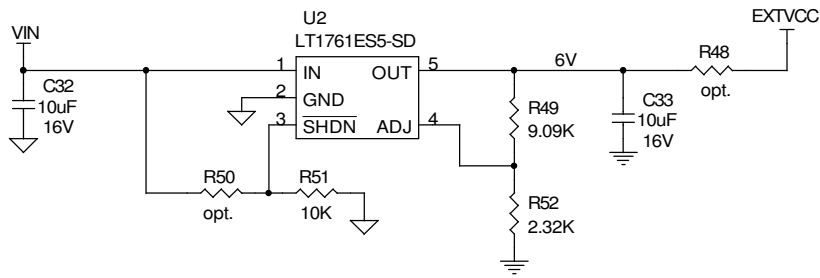
CUSTOMER NOTICE		CONTRACT NO.		APPROVALS		DATE	
LINEAR TECHNOLOGY HAS MADE A BEST EFFORT TO DESIGN A CIRCUIT THAT MEETS CUSTOMER-SUPPLIED SPECIFICATIONS; HOWEVER, IT REMAINS THE CUSTOMER'S RESPONSIBILITY TO VERIFY PROPER AND RELIABLE OPERATION IN THE ACTUAL APPLICATION. COMPONENT SUBSTITUTION AND PRINTED CIRCUIT BOARD LAYOUT MAY SIGNIFICANTLY AFFECT CIRCUIT PERFORMANCE OR RELIABILITY. CONTACT LINEAR TECHNOLOGY APPLICATIONS ENGINEERING FOR ASSISTANCE. THIS CIRCUIT IS PROPRIETARY TO LINEAR TECHNOLOGY AND SUPPLIED FOR USE WITH LINEAR TECHNOLOGY PARTS.		DRAWN	June Wu	9/7/05	TITLE		
		CHECKED			LTC3811EUHF		
		APPROVED			High Density Dual Output Step-Down DC/DC with Tracking		
		DESIGNER	Henry Zhang	9/5/05	SIZE	CAGE CODE	DWG NO
						DC971A	1
							1
							2



1630 McCarthy Blvd.
Folsom, CA 95602
Phone: (916) 351-1900
Fax: (916) 351-6507

TITLE: LTC3811EUHF
 High Density Dual Output Step-Down DC/DC with Tracking
 SIZE: CAGE CODE: DWG NO: DC971A
 REV: 1
 SCALE: FILENAME: SHEET 1 OF 2

OPTIONAL EXTVCC CIRCUIT



OPTIONAL POWER COMPONENTS

CUSTOMER NOTICE

LINEAR TECHNOLOGY HAS MADE A BEST EFFORT TO DESIGN A CIRCUIT THAT MEETS CUSTOMER-SUPPLIED SPECIFICATIONS; HOWEVER, IT REMAINS THE CUSTOMER'S RESPONSIBILITY TO VERIFY PROPER AND RELIABLE OPERATION IN THE ACTUAL APPLICATION. COMPONENT SUBSTITUTION AND PRINTED CIRCUIT BOARD LAYOUT MAY SIGNIFICANTLY AFFECT CIRCUIT PERFORMANCE OR RELIABILITY. CONTACT LINEAR TECHNOLOGY APPLICATIONS ENGINEERING FOR ASSISTANCE.

THIS CIRCUIT IS PROPRIETARY TO LINEAR TECHNOLOGY AND SUPPLIED FOR USE WITH LINEAR TECHNOLOGY PARTS.

CONTRACT NO.

APPROVALS	DATE
DRAWN June Wu	9/7/05
CHECKED	
APPROVED	
ENGINEER Henry Zhang	9/5/05
DESIGNER	



1630 McCarthy Blvd.
Milpitas, CA 95035
Phone: (408)432-1900
Fax: (408)434-0507

TITLE
LTC3811EUHF
High Density Dual Output Step-Down DC/DC with Tracking

SIZE	CAGE CODE	DWG NO	DC971A	REV A
------	-----------	--------	--------	----------

Tuesday, August 21, 2007

SCALE:	FILENAME:	SHEET 2 OF 2
--------	-----------	--------------