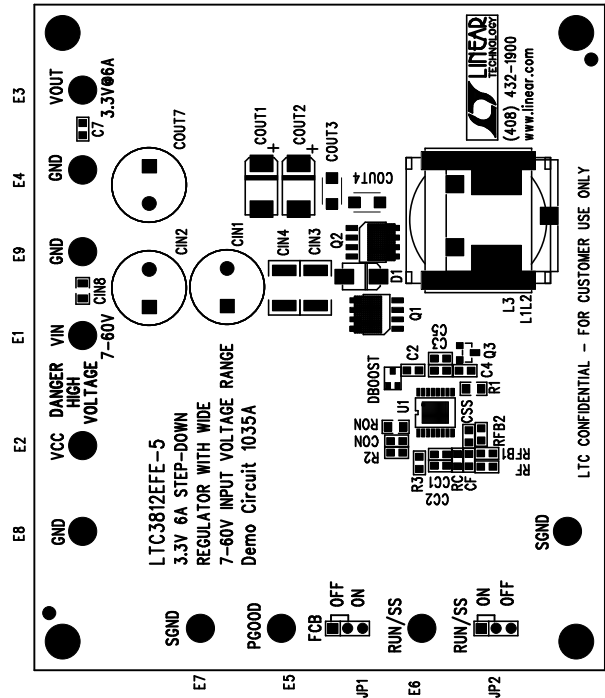


| REVISIONS | | |
|-----------|------|------|
| REV | APPR | DATE |
| | | |



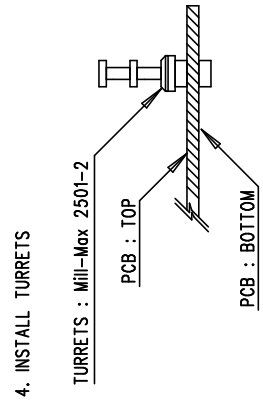
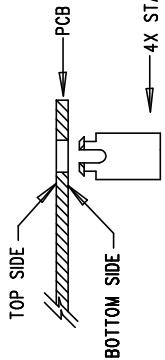
LINEAR TECHNOLOGY CORPORATION
DC1035A
01/16/06

TOP SILKSCREEN

Assembly Top Drawing

NOTES : Unless Otherwise Specified

1. BREAK BOARDS FROM THE PANEL WHEN ASSEMBLY IS COMPLETE.
2. JUMPER SHUNTS INSTALLATION: JP1-OFF, JP2-ON
3. INSTALL 4 STANDOFFS AT 4 CORNERS AS SHOWN BELOW:



APPROVALS

| DRAWN | INT | DATE |
|--------|-----|------|
| | | |
| CHECK | | |
| DESIGN | | |
| ENGR | | |
| | | |
| | | |
| | | |
| | | |
| | | |
| | | |

LINEAR
1630 McCarthy Blvd.
Milpitas, CA 95035
PH: (408)432-1900

TITLE: LTC3812EFE-5,
3.3V 6A STEP-DOWN REGULATOR
WITH WIDE 7-60V INPUT VOLTAGE RANGE

SIZE NONE
DESIGN # DC1035A
REV. 2
SHT 1 of 1