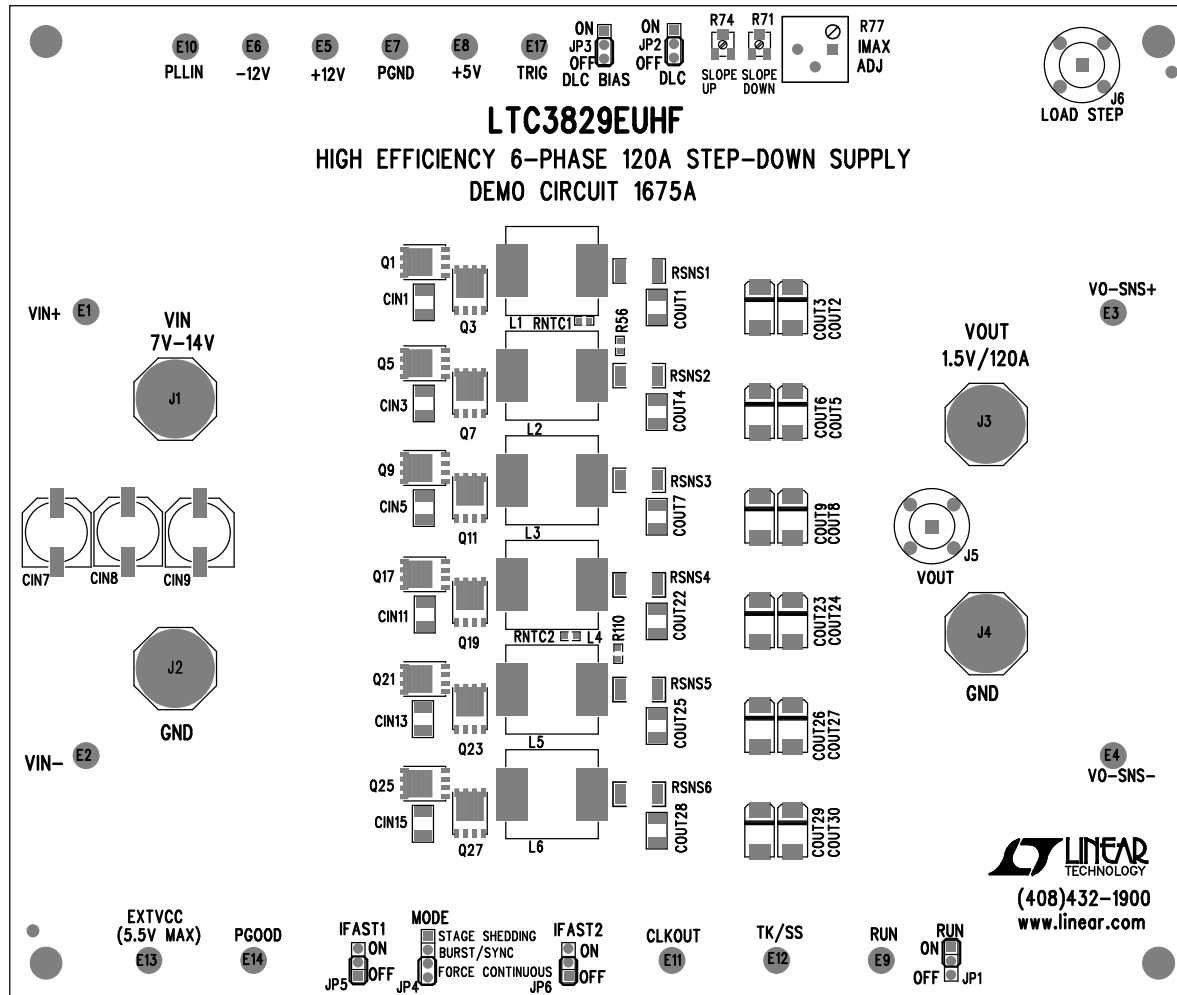


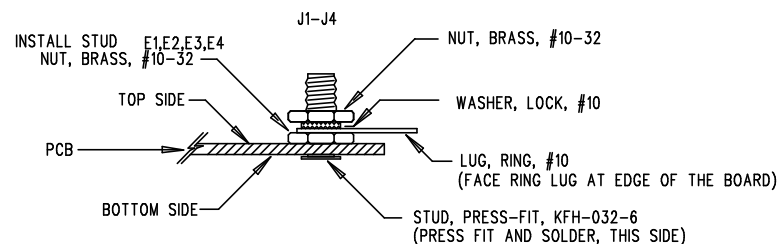
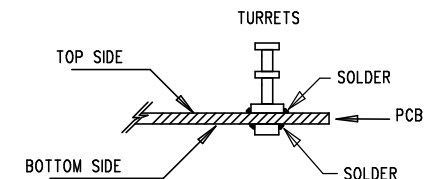
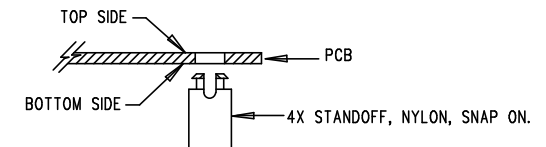
REVISION HISTORY			
ECO	REV	DESCRIPTION	APP. ENG. DATE
-	2	PRODUCTION	JIAN L. 12-01-10

# **LTC3829EUHF** **HIGH EFFICIENCY 6-PHASE 120A STEP-DOWN SUPPLY** **DEMO CIRCUIT 1675A**




## **NOTES: UNLESS OTHERWISE SPECIFIED**

1. WORKMANSHIP SHALL BE IN ACCORDANCE WITH IPC-A-610.
2. ASSEMBLY PROCESS SHALL INCLUDE: REFLOW SOLDER TOP SIDE SMD. MAXIMUM SOLDER TEMPERATURE IS 240 DEGREES CELSIUS.
3. PARTS TO OMIT WILL BE SPECIFIED ON THE BILL OF MATERIALS. LOCATIONS OF OMITTED PARTS SHALL BE FREE OF SOLDER. MASK THE SOLDER STENCIL WHERE SMT PARTS ARE OMITTED.
4. INSTALL SHUNTS AS SHOWN ON ASSY DRAWING.
5. DEPANELIZE BOARDS AFTER ASSEMBLY AND ROUTE-OUT THE BREAKOUT TABS ON FOUR SIDES OF THE BOARD EDGE.
6. DO NOT APPLY ANY KIND OF ASSEMBLY STAMP OR QA STAMP TO ANY BOARD.
7. INSTALL 4 STANDOFFS AT 4 LOCATIONS AS SHOWN BELOW:



LINEAR TECHNOLOGY  
DC1675A-2-LTC3829EUHF  
HIGH EFFICIENCY 6-PHASE 120A STEP-DOWN SUPPLY  
DATE: 12-01-10

APPROVALS		 1630 MCCARTHY BLVD MILPITAS, CA 95035 PH: (408)432-1900 www.linear.com LTC CONFIDENTIAL- FOR CUSTOMER USE ONLY	
PCB DES.	A.K.		
APP ENG.	JIAN L	TITLE: TOP ASSEMBLY DRAWING	
		HIGH EFFICIENCY 6-PHASE 120A STEP-DOWN SUPPLY	
		SIZE N/A	IC NO. LTC3829EUHF
			REV. 2
SCALE = NONE		FILENAME: DC1675A-2.PCB	SHT 1 OF 2