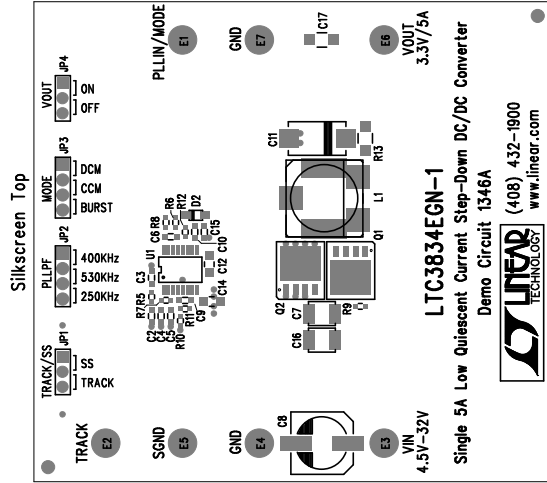



REVISIONS		
REV	APPR	DATE



INSTALL SHUNTS AS FOLLOW:

- JP1 = SS
- JP2 = 400KHZ
- JP3 = DCM
- JP4 = ON

## Assembly Top Drawing

APPROVALS					1630 McCarthy Blvd. Milpitas, CA 95035 PH: (408)432-1900		
			TITLE:		LTC3834EGN-1		
			Single 5A Low Quiescent Current Step-Down DC/DC Converter				
			SIZE	NON	Demo Circuit 1346A	REV. A	
			DESIGN #		SHT 1 of 1		
SCALE = NON							