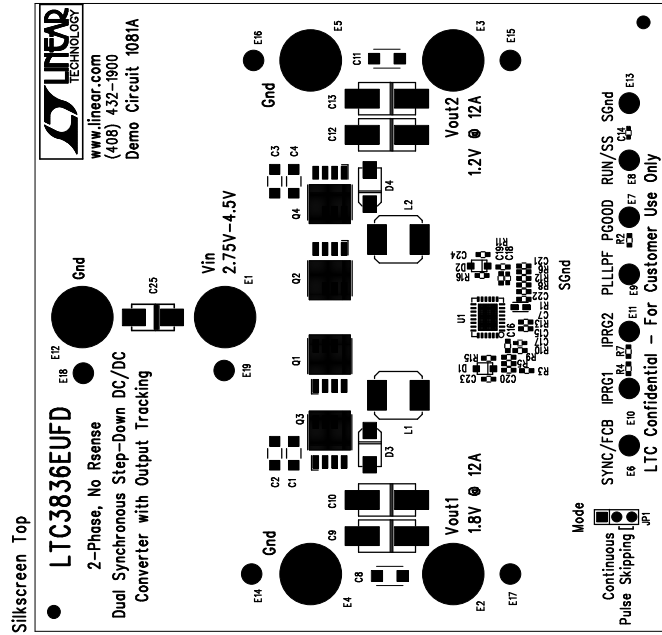


REVISIONS		
REV	APPR	DATE



Assembly Top Drawing

NOTES : Unless Otherwise Specified

1. BREAK BOARDS FROM THE PANEL WHEN ASSEMBLY IS COMPLETE.
2. OPTIONAL COMPONENTS ARE UNSTUFFED AND SHOULD BE FREE OF SOLDER AFTER ASSEMBLY.
3. JUMPER SHUNTS INSTALLATION: JP1- Pulse Skipping

APPROVALS		LTC3836EUF		LTC3836EUF	
DRAWN	INT	DATE	1630 McCarthy Blvd.	Wipac, CA 95035	PH: (408)432-1900
CHECK			LINEAR TECHNOLOGY		
DESIGN			TITLE: LTC3836EUF		
ENGR			2-Phase, NO RSENSE, Dual Synchronous		
			Step-Down DC/DC Converter with Output Tracking		
			SIZE	NONE	REV.
				Demo Circuit 1081A	
SCALE = NONE		DESIGN #		SHT 1 of 1	