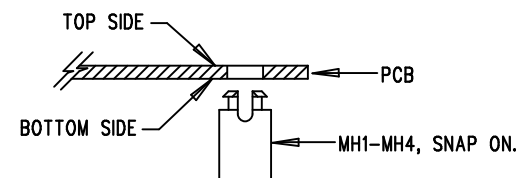


REVISION HISTORY				
ECO	REV	DESCRIPTION	APP. ENG.	DATE
-	2	PRODUCTION	MIKE S.	08-29-12


NOTES: UNLESS OTHERWISE SPECIFIED

- WORKMANSHIP SHALL BE IN ACCORDANCE WITH IPC-A-610.
- ASSEMBLY PROCESS SHALL INCLUDE: REFLOW SOLDER TOP SIDE SMD. MAXIMUM SOLDER TEMPERATURE IS 240 DEGREES CELSIUS.
- PARTS TO OMIT WILL BE SPECIFIED ON THE BILL OF MATERIALS. LOCATIONS OF OMITTED PARTS SHALL BE FREE OF SOLDER. MASK THE SOLDER STENCIL WHERE SMT PARTS ARE OMITTED.
- INSTALL SHUNTS AS SHOWN ON ASSY DRAWING.
- DEPANELIZE BOARDS AFTER ASSEMBLY AND ROUTE-OUT THE BREAKOUT TABS ON FOUR SIDES OF THE BOARD EDGE.
- DO NOT APPLY ANY KIND OF ASSEMBLY STAMP OR QA STAMP TO ANY BOARD.
- INSTALL 4 STANDOFFS AT 4 LOCATIONS AS SHOWN BELOW:



- 8 MARK EACH LTC PART NUMBER AND ASSEMBLY TYPE WITH BLACK PERMANENT MARKER AS SHOWN IN TABLE BELOW:

ASSY	U1
DC1997A-A	LTC3838EUHF-1
DC1997A-B	LTC3838EUHF-2

APPROVALS		 <div> 1630 MCCARTHY BLVD MILPITAS, CA 95035 PH: (408)432-1900 www.linear.com LTC CONFIDENTIAL- FOR CUSTOMER USE ONLY </div>	
PCB DES.	LT		
APP ENG.	MIKE S.	TITLE: TOP ASSEMBLY DRAWING FAST TRANSIENT DUAL OUTPUT STEP-DOWN DC-DC CONVERTER	
		SIZE N/A	IC NO. LTC3838EUHF-1/-2 DEMO CIRCUIT 1997A REV. 2
SCALE = NONE		FILENAME: 1997A-2.PCB	SHT 1 OF 2