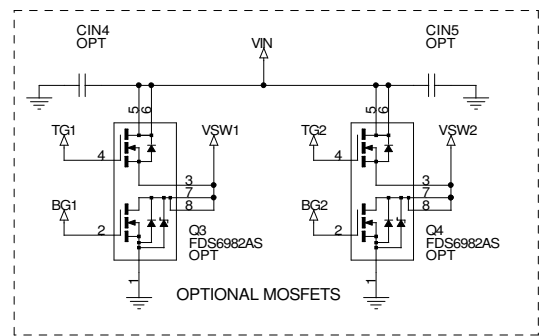
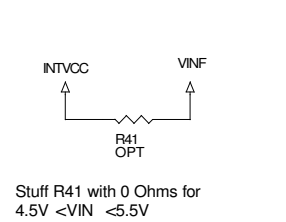
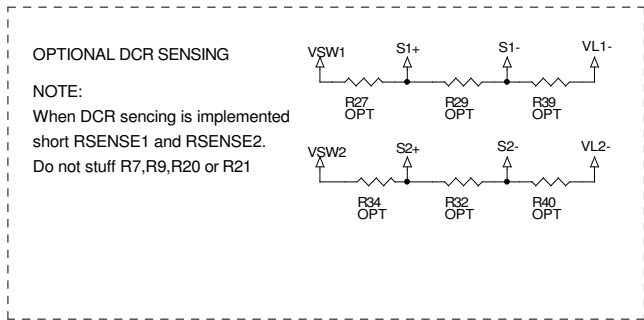
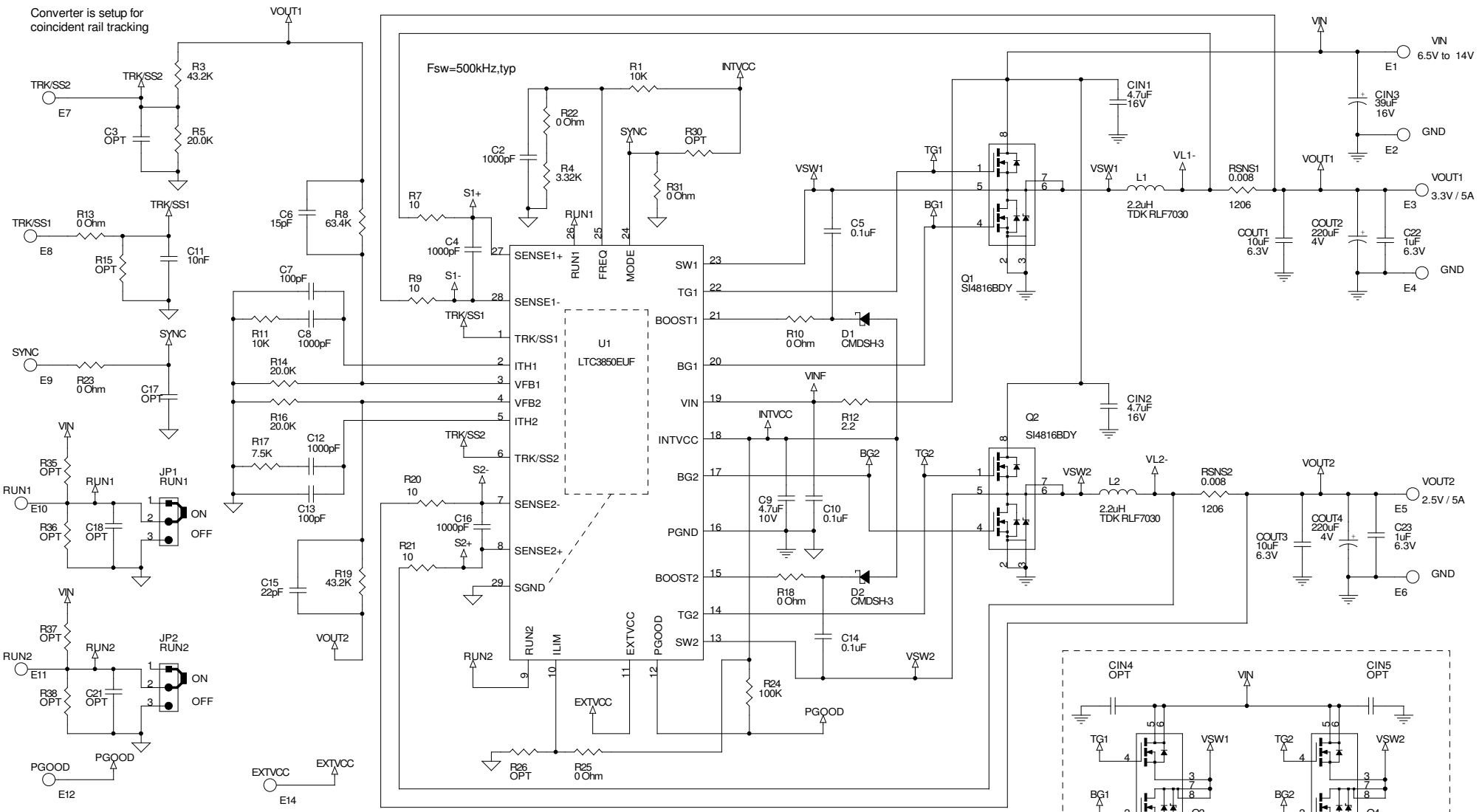


NOTE:
Converter is setup for coincident rail tracking



APPROVALS		DATE		<small>1630 McCarthy Blvd. Milpitas, CA 95035 Phone: (408)532-1900 Fax: (408)534-0057</small>	
DRAWN Antonina Karpova		6/19/06		TITLE	LTC3850EUF
CHECKED			3.3V/5A and 2.5V/5A REGULATOR		
APPROVED			SIZE	CAGE CODE	DWG NO
ENGINEER Mike Shriver		6/19/06			DC1126A
DESIGNER					REV 3
THIS CIRCUIT IS PROPRIETARY TO LINEAR TECHNOLOGY AND SUPPLIED FOR USE WITH LINEAR TECHNOLOGY PARTS.			Friday, June 15, 2007	SCALE:	FILENAME:
				SHEET 1	OF 1