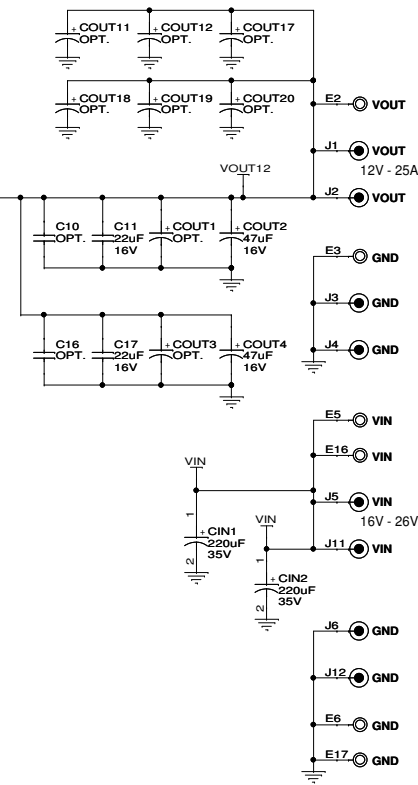
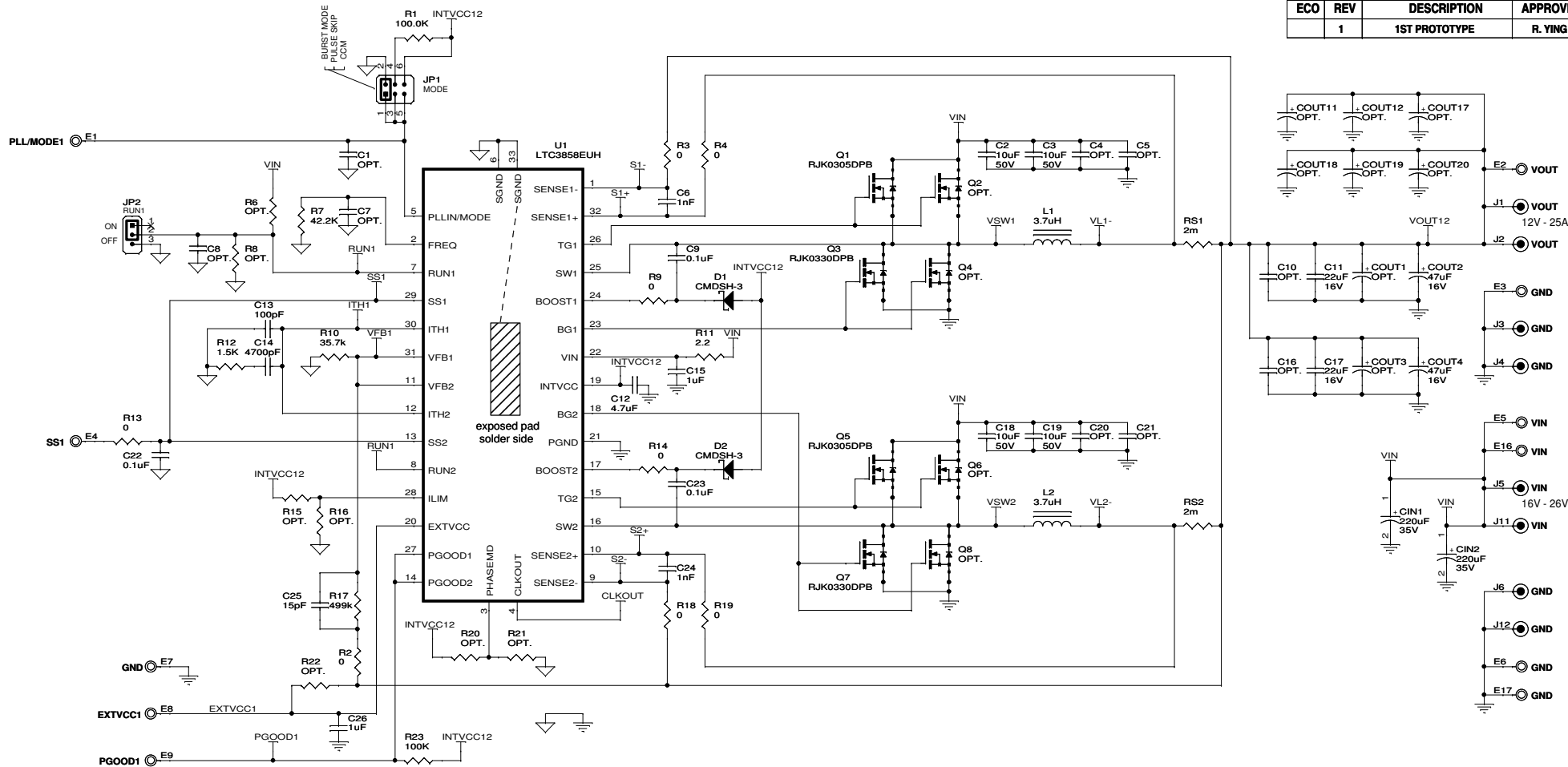
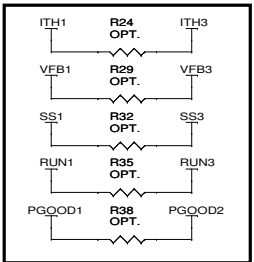


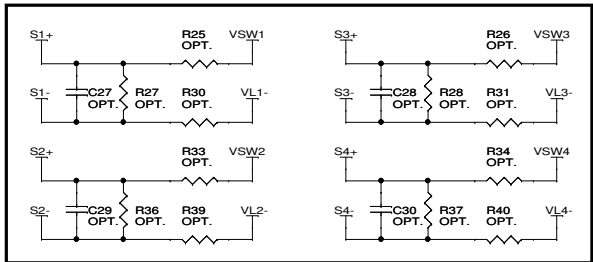
REVISION HISTORY				
ECO	REV	DESCRIPTION	APPROVED	DATE
	1	1ST PROTOTYPE	R. YING	09-30-09



OPTIONAL INDUCTOR DRC SENSING NOTE: WHEN DRC SENSING IS



OPTIONAL JUMPERS FOR: SINGLE OUTPUT / DUAL VOUT OPERATION



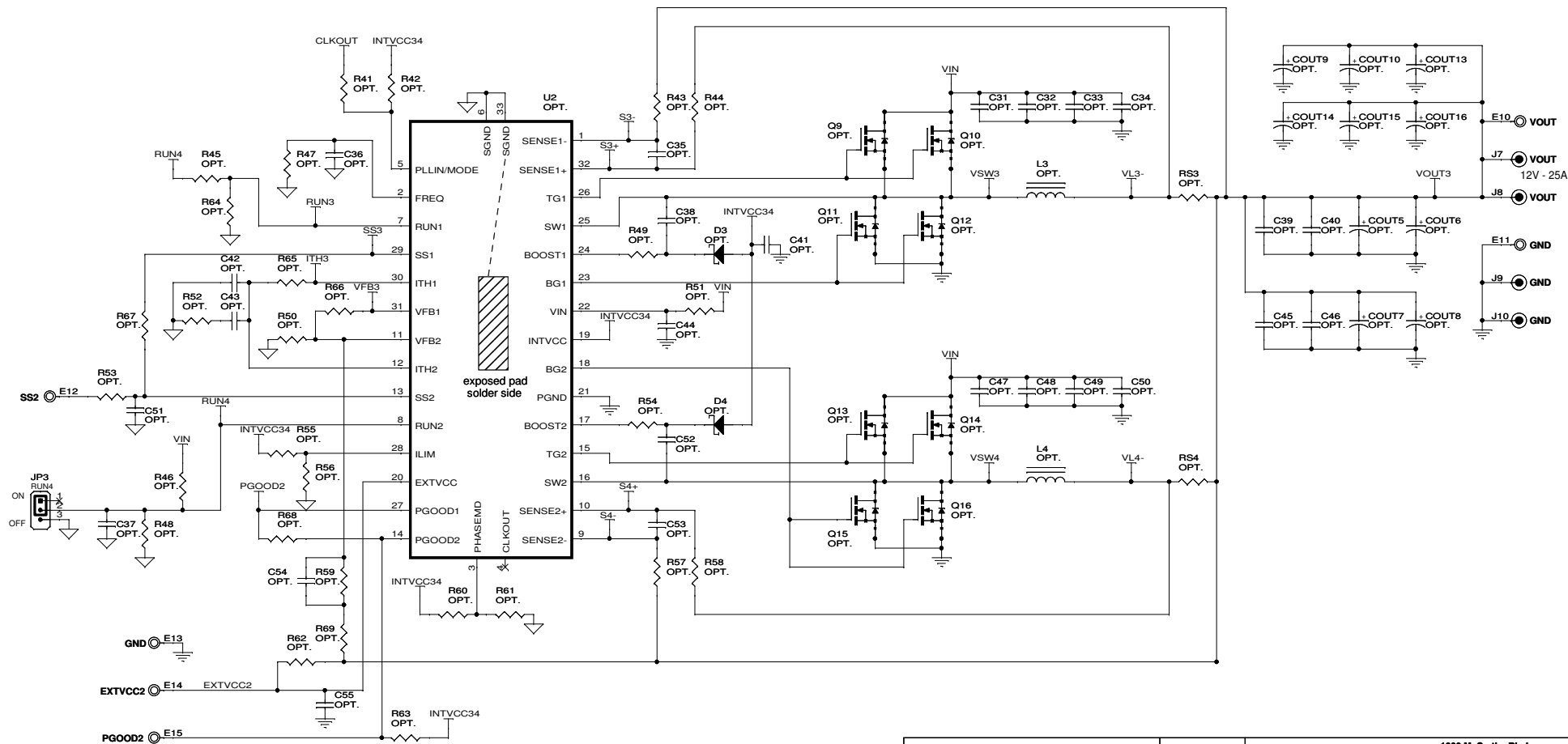
R16=OPT R20=OPT JP6=1: 4Phase Interleaving
 R16=0 R20=OPT JP6=1: 3Phase Interleaving
 R16=OPT R20=OPT JP6=3: Two Separate 2Phase Running

CUSTOMER NOTICE
 LINEAR TECHNOLOGY HAS MADE A BEST EFFORT TO DESIGN A CIRCUIT THAT MEETS CUSTOMER-SUPPLIED SPECIFICATIONS; HOWEVER, IT REMAINS THE CUSTOMER'S RESPONSIBILITY TO VERIFY PROPER AND RELIABLE OPERATION IN THE ACTUAL APPLICATION. COMPONENT SUBSTITUTION AND PRINTED CIRCUIT BOARD LAYOUT MAY SIGNIFICANTLY AFFECT CIRCUIT PERFORMANCE OR RELIABILITY. CONTACT LINEAR TECHNOLOGY APPLICATIONS ENGINEERING FOR ASSISTANCE.
 THIS CIRCUIT IS PROPRIETARY TO LINEAR TECHNOLOGY AND SUPPLIED FOR USE WITH LINEAR TECHNOLOGY PARTS.

CONTRACT NO.	APPROVALS		
PCB DES. K. LAC	ENG. R. YING		
TITLE: SCHEMATIC			
POLYPHASE HIGH VOUT SYNCHRONOUS BUCK CONVERTER			
SIZE A	IC NO. LTC3858EUH	REV 2	
DATE: Thursday, February 11, 2010		SHEET 1 OF 2	

1630 McCarthy Blvd.
 Milpitas, CA 95035
 Phone: (408)432-1900
 Fax: (408)434-0507
 LTC Confidential-For Customer Use Only

REVISION HISTORY				
ECO	REV	DESCRIPTION	APPROVED	DATE
	1	1ST PROTOTYPE	R. YING	09-30-09



CUSTOMER NOTICE
 LINEAR TECHNOLOGY HAS MADE A BEST EFFORT TO DESIGN A CIRCUIT THAT MEETS CUSTOMER-SUPPLIED SPECIFICATIONS; HOWEVER, IT REMAINS THE CUSTOMER'S RESPONSIBILITY TO VERIFY PROPER AND RELIABLE OPERATION IN THE ACTUAL APPLICATION. COMPONENT SUBSTITUTION AND PRINTED CIRCUIT BOARD LAYOUT MAY SIGNIFICANTLY AFFECT CIRCUIT PERFORMANCE OR RELIABILITY. CONTACT LINEAR TECHNOLOGY APPLICATIONS ENGINEERING FOR ASSISTANCE.
 THIS CIRCUIT IS PROPRIETARY TO LINEAR TECHNOLOGY AND SUPPLIED FOR USE WITH LINEAR TECHNOLOGY PARTS.

CONTRACT NO.
 APPROVALS
 PCB DES. K. LAC
 ENG. R. YING

LINEAR TECHNOLOGY
 1630 McCarthy Blvd.
 Milpitas, CA 95035
 Phone: (408)432-1900
 Fax: (408)434-0507
 LTC Confidential-For Customer Use Only

TITLE: SCHEMATIC
POLYPHASE HIGH VOUT SYNCHRONOUS BUCK CONVERTER

SIZE A IC NO. **LTC3858EUH** REV 2
DEMO CIRCUIT 1510A-B

DATE: Thursday, February 11, 2010 SHEET 2 OF 2