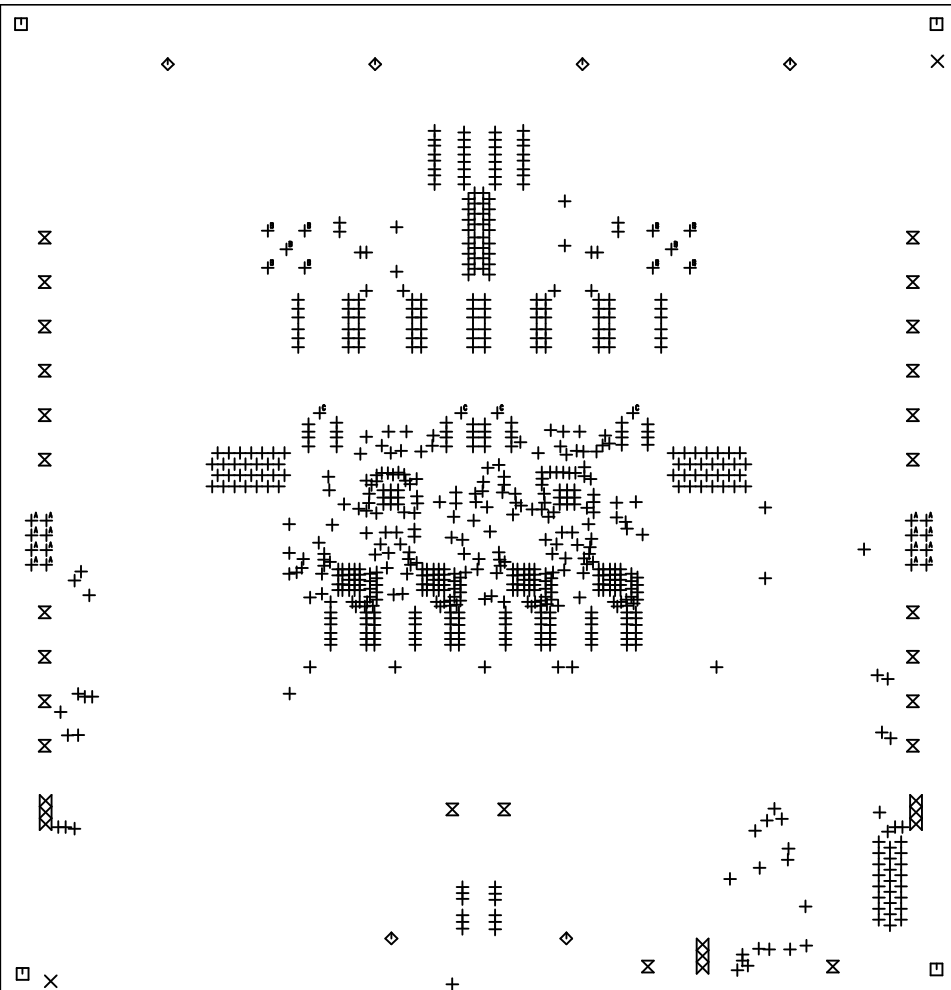


6.670"



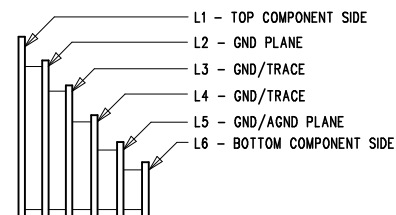
DRILL DRAWING LAYER
 LINEAR TECHNOLOGY
 DC1755A-2-LTC3860EUH
 DUAL OUTPUT 4-PHASE STEP-DOWN CONVERTER
 DATE: 06-29-11

SIZE	QTY	SYM	PLATED	TOL
0.00984	723	+	YES	+/-0.003
0.07	2	×	NO	+/-0.003
0.187	4	□	YES	+/-0.003
0.19016	6	◇	YES	+/-0.003
0.09449	24	⊗	YES	+/-0.003
0.03543	9	⊗ ^A	YES	+/-0.003
0.035	16	⊗ ^B	YES	+/-0.003
0.05512	10	⊗ ^C	YES	+/-0.003
0.06	4	⊗	NO	+/-0.003

6.460"

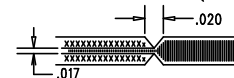
REVISION HISTORY			
ECO	REV	DESCRIPTION	APPROVAL DATE
	2	PRODUCTION	MIKE S. 06-29-11



LAYER CONSTRUCTION



NOTES: UNLESS OTHERWISE SPECIFIED

- FAB PER IPC-A-600.
- MATERIAL: -LEAD FREE ASSEMBLY COMPLIANT, ISOLA FR-370HR OR EQUIVALENT.
 -FINISHED THICKNESS TO BE 0.062" +/- .005"
 -TOTAL OF 4 LAYERS WITH 2 OZ. CU ON THE OUTER LAYERS AND 1 OZ. CU ON THE INNER LAYERS.
 -FLAMMABILITY RATING: 94 V-0 MINIMUM.
- SIZE: CUT TO DIMENSIONS AND TOLERANCES SHOWN. 0.00" ARE PRIMARY DATUMS.
- DRILLING: -DRILL HOLES PER SCHEDULE. PLATE THROUGH HOLES WITH COPPER, 0.001" THICK MIN.
 -ALL HOLE SIZES ARE SPECIFIED AFTER PLATING.
 -HOLE LOCATION TOLERANCES ARE +/-0.003" IN RELATION TO CENTER
- FINISH: -SMOBC USING LPI BOTH SIDES, COLOR GREEN.
 -GOLD IMMERSION BOTH SIDES.
 -FOR SILKSCREENS: USE WHITE NON-CONDUCTIVE INK.
- DO NOT ALTER ARTWORK e.g. TO ADD LOGO OR DATE CODE. PAD SIZE CAN BE MODIFIED TO MEET END FINISH.
- PCBS ARE TO BE RoHS COMPLIANT.
- SCORING FOR PANELIZED PCB (PRODUCTION FAB ONLY):



<div>UNLESS OTHERWISE SPECIFIED</div> <div>DIMENSIONS ARE IN INCHES</div> <div>TOLERANCES:</div> <div>0.XX" = ±0.01"</div> <div>0.XXX" = ±0.005"</div> <div>INTERPRET DIM AND TOL</div> <div>PER ASME Y14.5M-1994</div> <div>THIRD ANGLE PROJECTION</div> <div></div>	<div>APPROVALS</div> <div>PCB DES. AK</div> <div>APP ENG. MIKE S.</div> <div> </div> <div> </div> <div> </div> <div>SCALE = NONE</div>		<div> LINEAR TECHNOLOGY</div> <div>1630 MCCARTHY BLVD MILPITAS, CA 95035 PH: (408)432-1900 www.linear.com LTC CONFIDENTIAL - FOR CUSTOMER USE ONLY</div> <div><div>TITLE: FABRICATION DRAWING</div><div>DUAL OUTPUT 4-PHASE STEP-DOWN CONVERTER</div><div><div>SIZE IC NO. LTC3860EUH REV 2</div><div>N/A DEMO CIRCUIT 1755A</div></div><div>FILENAME: DC1755A-2.PCB SHT 1 OF 1</div></div>

IC NO. LTC3860EUH
 DEMO CIRCUIT 1755A
 REV 2