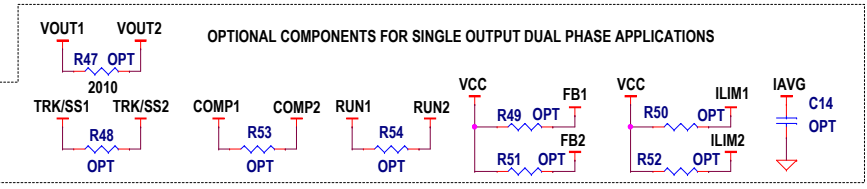
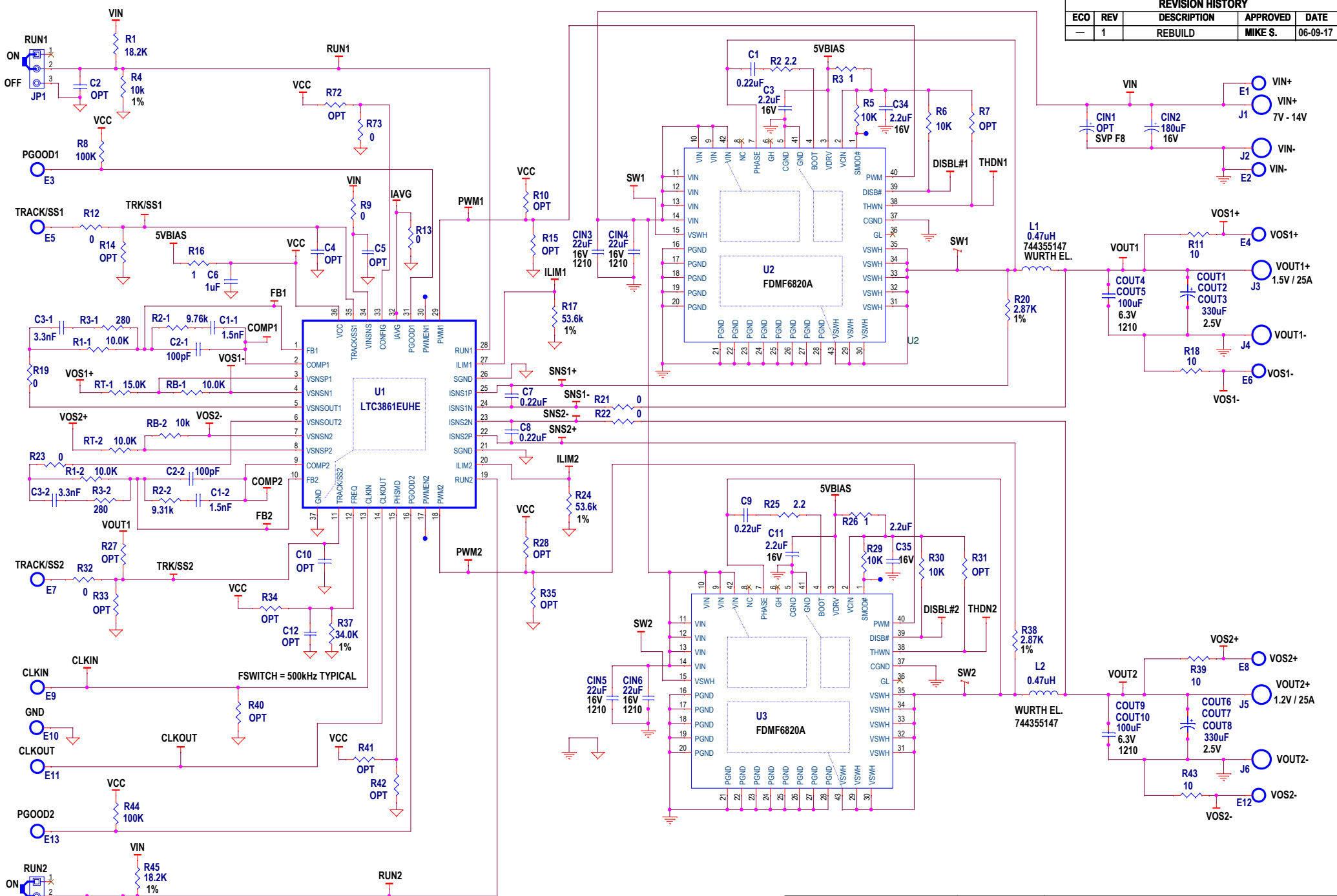


REVISION HISTORY				
ECO	REV	DESCRIPTION	APPROVED	DATE
-	1	REBUILD	MIKE S.	06-09-17



CUSTOMER NOTICE
 ANALOG DEVICES HAS MADE A BEST EFFORT TO DESIGN A CIRCUIT THAT MEETS CUSTOMER-SUPPLIED SPECIFICATIONS; HOWEVER, IT REMAINS THE CUSTOMER'S RESPONSIBILITY TO VERIFY PROPER AND RELIABLE OPERATION IN THE ACTUAL APPLICATION. COMPONENT SUBSTITUTION AND PRINTED CIRCUIT BOARD LAYOUT MAY SIGNIFICANTLY AFFECT CIRCUIT PERFORMANCE OR RELIABILITY. CONTACT ANALOG DEVICES APPLICATIONS ENGINEERING FOR ASSISTANCE.

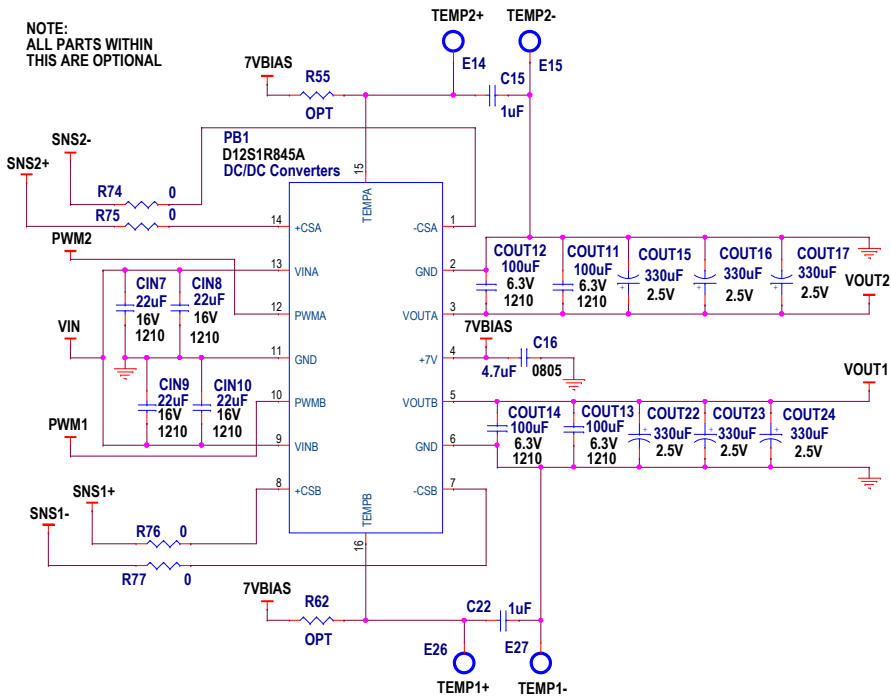
THIS CIRCUIT IS PROPRIETARY TO ANALOG DEVICES AND SUPPLIED FOR USE WITH ANALOG DEVICES PARTS.

APPROVALS	
PCB DES.	LT
APP ENG.	MS

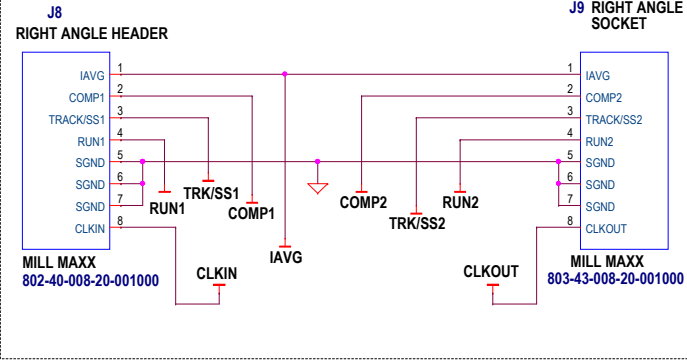
TITLE: SCHEMATIC HIGH CURRENT DUAL OUTPUT SYNCHRONOUS BUCK CONVERTER	
IC NO. LTC3861EUHE SKU NO. DC1822B	SCHEMATIC NO. AND REVISION: 710-DC1822B_REV01
SIZE: N/A DATE: 06-09-17	SHEET 1 OF 3

OPTIONAL POWER BLOCK

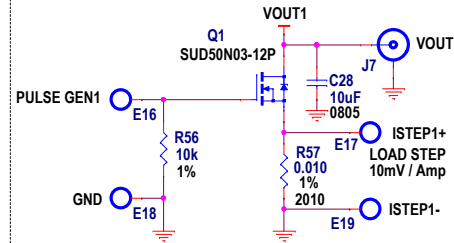
NOTE:
ALL PARTS WITHIN
THIS ARE OPTIONAL



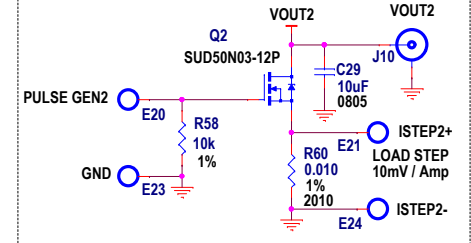
HEADER/SOCKET TO PARALLEL DC1822A TO ANOTHER DC1822A



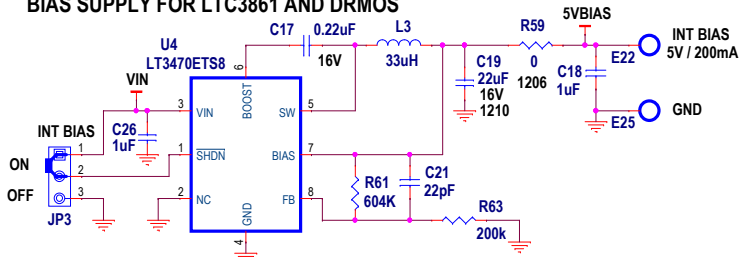
DYNAMIC LOAD CIRCUIT FOR VOUT1



DYNAMIC LOAD CIRCUIT FOR VOUT2

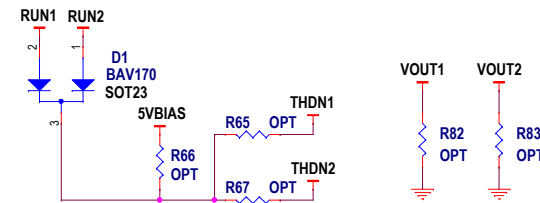


BIAS SUPPLY FOR LTC3861 AND DRMOS



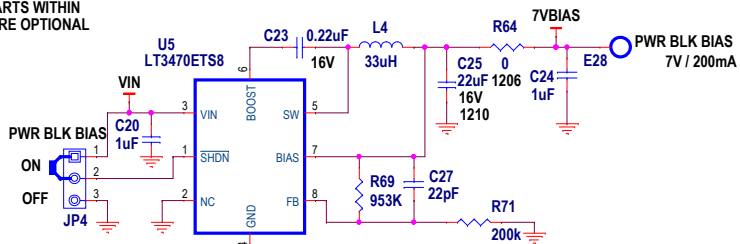
NOTE:
ALL PARTS WITHIN
THIS ARE OPTIONAL

UVLO CIRCUIT



OPTIONAL BIAS SUPPLY FOR POWER BLOCK

NOTE:
ALL PARTS WITHIN
THIS ARE OPTIONAL



CUSTOMER NOTICE

ANALOG DEVICES HAS MADE A BEST EFFORT TO DESIGN A CIRCUIT THAT MEETS CUSTOMER-SUPPLIED SPECIFICATIONS; HOWEVER, IT REMAINS THE CUSTOMER'S RESPONSIBILITY TO VERIFY PROPER AND RELIABLE OPERATION IN THE ACTUAL APPLICATION. COMPONENT SUBSTITUTION AND PRINTED CIRCUIT BOARD LAYOUT MAY SIGNIFICANTLY AFFECT CIRCUIT PERFORMANCE OR RELIABILITY. CONTACT ANALOG DEVICES APPLICATIONS ENGINEERING FOR ASSISTANCE.

THIS CIRCUIT IS PROPRIETARY TO ANALOG DEVICES AND SUPPLIED FOR USE WITH ANALOG DEVICES PARTS.

APPROVALS

PCB DES.	LT
APP ENG.	MS



www.analog.com

Phone: (408)432-1900

TITLE: SCHEMATIC
HIGH CURRENT DUAL OUTPUT
SYNCHRONOUS BUCK CONVERTER

IC NO. LTC3861EUE
SKU NO. DC1822B

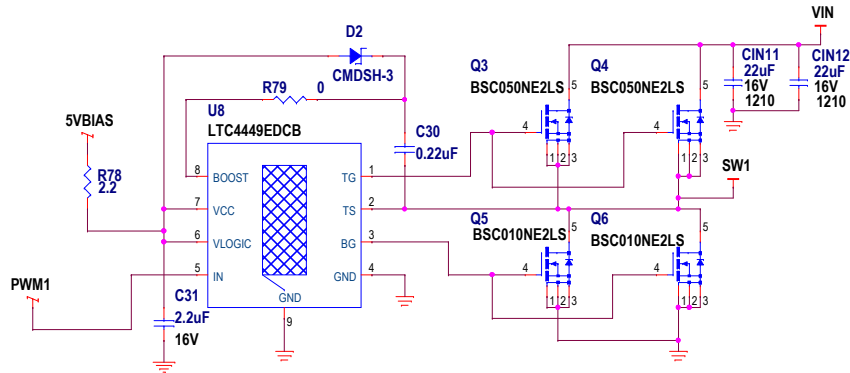
SCHEMATIC NO. AND REVISION:
710-DC1822B_REV01

SIZE: N/A DATE: 06-09-17

SHEET 2 OF 3

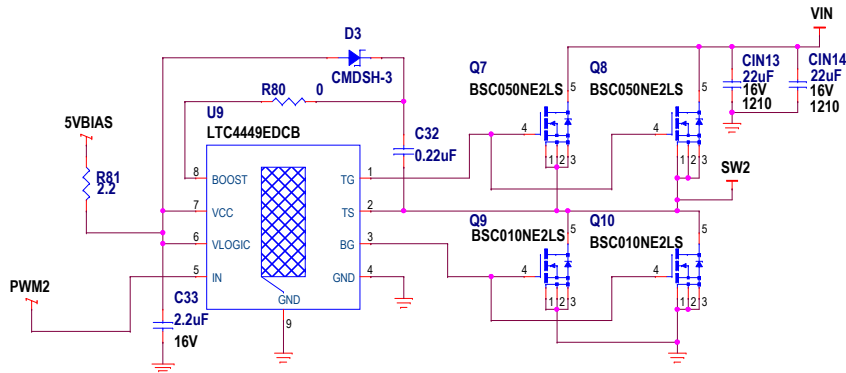
OPTIONAL DISCRETE GATE DRIVER AND MOSFETS FOR PHASE 1

NOTE:
ALL PARTS WITHIN
THIS ARE OPTIONAL



OPTIONAL DISCRETE GATE DRIVER AND MOSFETS FOR PHASE 2

NOTE:
ALL PARTS WITHIN
THIS ARE OPTIONAL



CUSTOMER NOTICE

ANALOG DEVICES HAS MADE A BEST EFFORT TO DESIGN A CIRCUIT THAT MEETS CUSTOMER-SUPPLIED SPECIFICATIONS; HOWEVER, IT REMAINS THE CUSTOMER'S RESPONSIBILITY TO VERIFY PROPER AND RELIABLE OPERATION IN THE ACTUAL APPLICATION. COMPONENT SUBSTITUTION AND PRINTED CIRCUIT BOARD LAYOUT MAY SIGNIFICANTLY AFFECT CIRCUIT PERFORMANCE OR RELIABILITY. CONTACT ANALOG DEVICES APPLICATIONS ENGINEERING FOR ASSISTANCE.

THIS CIRCUIT IS PROPRIETARY TO ANALOG DEVICES AND SUPPLIED FOR USE WITH ANALOG DEVICES PARTS.

APPROVALS

PCB DES.	LT
APP ENG.	MS



www.analog.com

Phone: (408)432-1900

TITLE: SCHEMATIC
HIGH CURRENT DUAL OUTPUT
SYNCHRONOUS BUCK CONVERTER

IC NO. LTC3861EUHE
SKU NO. DC1822B

SCHEMATIC NO. AND REVISION:
710-DC1822B_REV01

SIZE: N/A DATE: 06-09-17

SHEET 3 OF 3