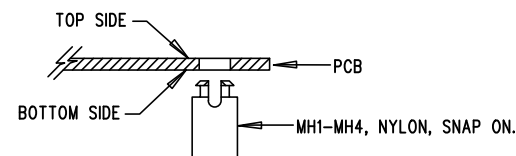




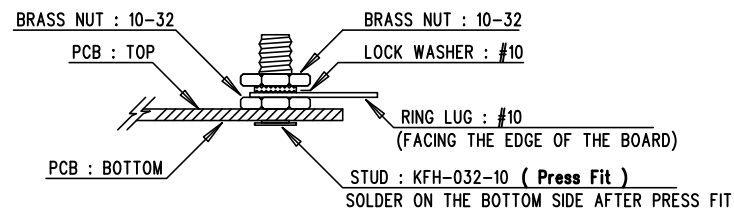
REVISION HISTORY				
ECO	REV	DESCRIPTION	APP. ENG.	DATE
-	1	PRODUCTION	MIKE S.	06-0917

NOTES: UNLESS OTHERWISE SPECIFIED


1. WORKMANSHIP SHALL BE IN ACCORDANCE WITH IPC-A-610.
2. ASSEMBLY PROCESS SHALL INCLUDE: REFLOW SOLDER TOP SIDE SMD. MAXIMUM SOLDER TEMPERATURE IS 240 DEGREES CELSIUS.
3. PARTS TO OMIT WILL BE SPECIFIED ON THE BILL OF MATERIALS. LOCATIONS OF OMITTED PARTS SHALL BE FREE OF SOLDER. MASK THE SOLDER STENCIL WHERE SMT PARTS ARE OMITTED.
4. INSTALL SHUNTS AS SHOWN ON ASSY DRAWING.
5. DEPANELIZE BOARDS AFTER ASSEMBLY AND ROUTE-OUT THE BREAKOUT TABS ON FOUR SIDES OF THE BOARD EDGE.
6. DO NOT APPLY ANY KIND OF ASSEMBLY STAMP OR QA STAMP TO ANY BOARD.
7. INSTALL 4 STANDOFFS AT 4 LOCATIONS AS SHOWN BELOW:



8. INSTALL J1-J6, STUD, TEST PIN AS SHOWN BELOW:



9. CAPACITORS AT COUT1-3 & COUT6-8 ARE MSL3 DEVICES. IF PART WILL BE REFLOWED, USE PARTS WITHIN 1 WEEK OR LESS AFTER OPENING SEALED BAG.

APPROVALS			1630 MCCARTHY BLVD MILPITAS, CA 95035 PH: (408) 352-1900 WWW.LINEAR.COM LTC CONFIDENTIAL- FOR CUSTOMER USE ONLY	
PCB DES.	LT			
APP ENG.	MIKE S.		TITLE: TOP ASSEMBLY DRAWING	
			HIGH CURRENT DUAL OUTPUT SYNCHRONOUS BUCK CONVERTER	
		SIZE N/A	IC NO. LTC3861EUHE DEMO CIRCUIT 1822B	REV. 1
SCALE = NONE		FILENAME: DC1822B-1.PCB		SHT 1 OF 1