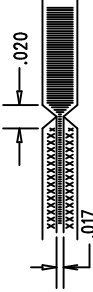
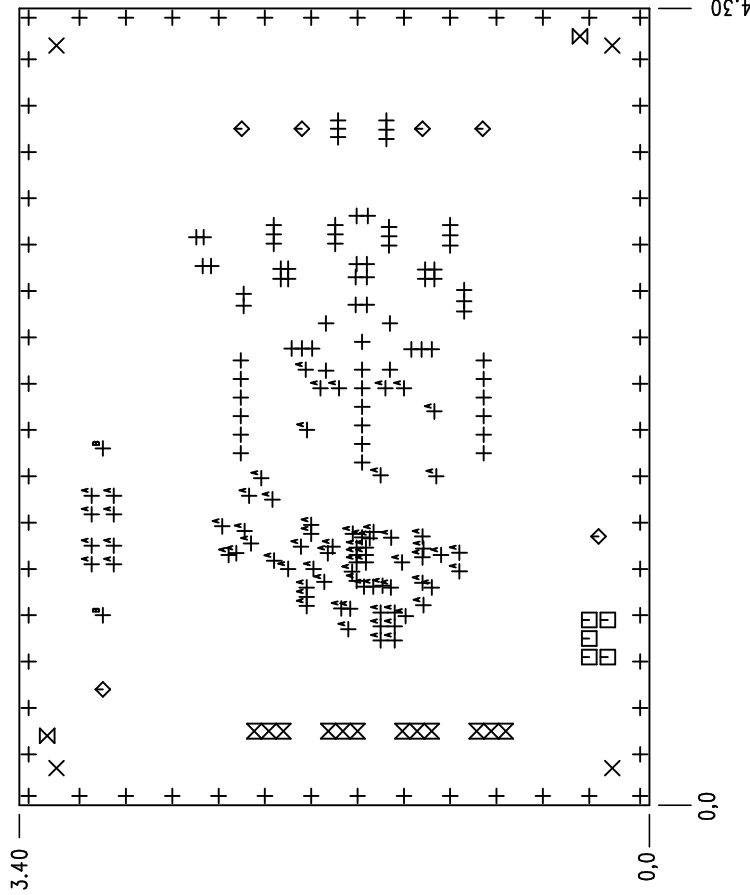


## NOTES: UNLESS OTHERWISE SPECIFIED

1. FAB PER IPC-A-600.
2. MATERIAL: -LEAD FREE ASSEMBLY COMPLIANT, ISOLA FR-370HR OR EQUIVALENT.
  - FINISHED THICKNESS TO BE 0.062 +/- .005
  - TOTAL OF 4 LAYERS WITH 2 OZ. CU ON THE OUTER LAYERS AND 1 OZ. CU ON THE INNER LAYERS.
  - FLAMMABILITY RATING: 94 V-0 MINIMUM.
3. SIZE: CUT TO DIMENSIONS AND TOLERANCES SHOWN.  
0.00 ARE PRIMARY DATUMS.
4. DRILLING: -DRILL HOLES PER SCHEDULE. PLATE THROUGH HOLES WITH COPPER, 0.001" THICK MIN.
  - ALL HOLE SIZES ARE SPECIFIED AFTER PLATING.
  - HOLE LOCATION TOLERANCES ARE +/-0.003 IN RELATION TO CENTER
5. FINISH: -SMOBC USING LPI BOTH SIDES, COLOR GREEN.
  - GOLD IMMERSION BOTH SIDES.
  - FOR SILKScreens: USE WHITE NON-CONDUCTIVE INK.
6. DO NOT ALTER ARTWORK e.g. TO ADD LOGO OR DATE CODE. PAD SIZE CAN BE MODIFIED TO MEET END FINISH.
7. PCBs ARE TO BE RoHS COMPLIANT.
8. SCORING FOR PANELIZED PCB (PRODUCTION FAB ONLY):



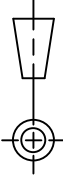
SHOWN FROM TOP SIDE



SIZE	QTY	SYM	PLATED	TOL
0.025	132	+	YES	+/-0.003
0.187	4	×	NO	+/-0.003
0.035	5	□	YES	+/-0.003
0.094	6	◇	YES	+/-0.003
0.07	2	⊗	NO	+/-0.003
0.04	12	⊗	YES	+/-0.003
0.015	74	⊕ <sup>A</sup>	YES	+/-0.003
0.189	2	⊕ <sup>B</sup>	YES	+/-0.003

UNLESS OTHERWISE SPECIFIED

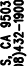
DIMENSIONS ARE IN INCHES  
TOLERANCES:  
0.XX = ± 0.01  
0.XXX = ± 0.005  
INTERPRET DIM AND TOL  
PER ASME Y14.5M-1994  
THIRD ANGLE PROJECTION



## APPROVALS

PCB DES.	HZ
APP ENG.	GORAN P.
SCALE = NONE	

SCALE = NONE



**LINEAR**  
TECHNOLOGY

1830 MCCARTHY BLVD  
MILPITAS, CA 95035  
PH: (408) 432-1900  
www.linear.com

LTC CONFIDENTIAL-  
FOR CUSTOMER USE ONLY

TITLE: FABRICATION DRAWING

LOW NOISE POLYPHASE  
SEPIC POWER CONVERTER

SIZE	IC NO.	LTC3862EFE-2	REV
N/A	DEMO	CIRCUIT 1891A	2

FILENAME: DC1891A-2.PCB

SHEET 1 OF 1