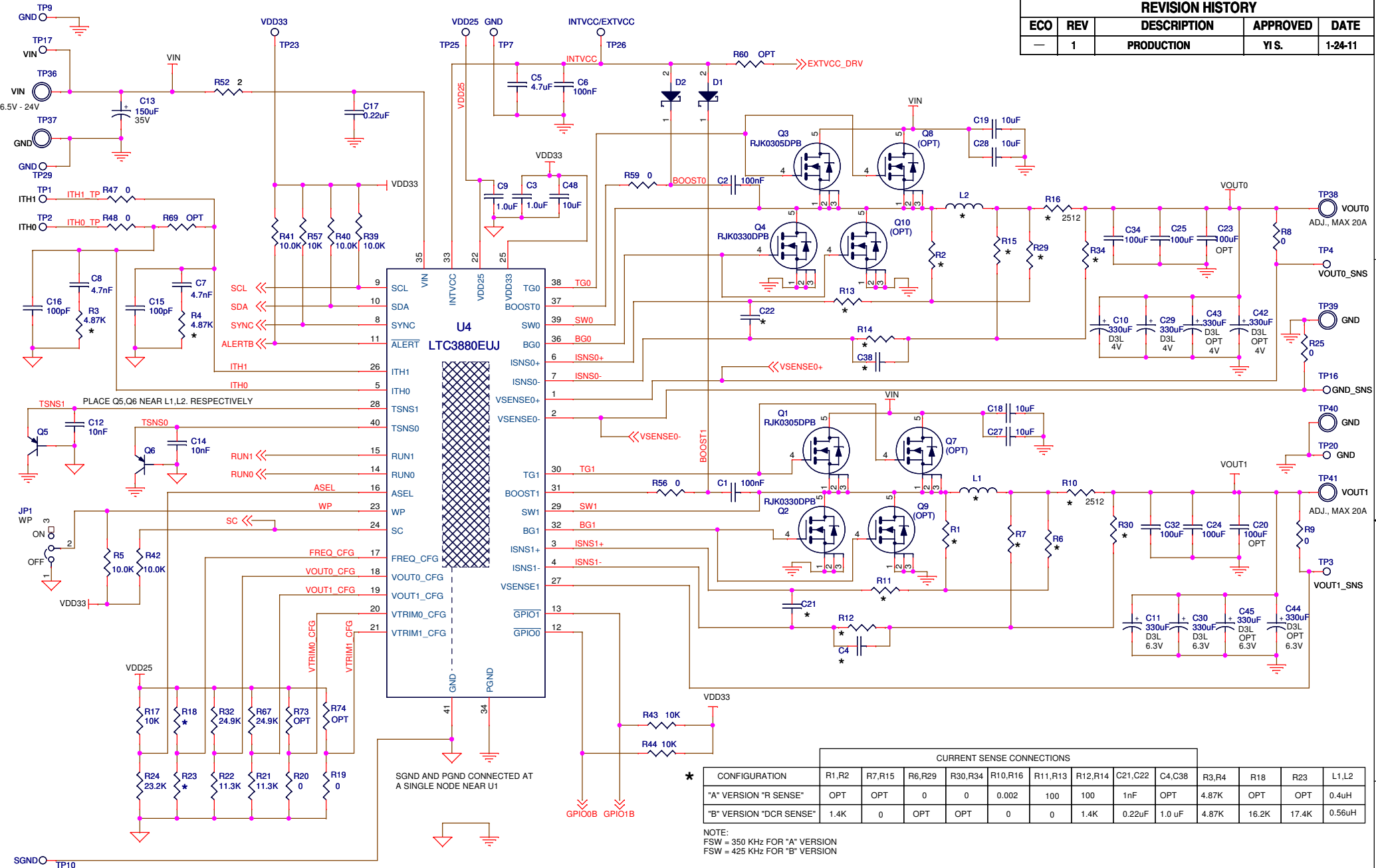


REVISION HISTORY				
ECO	REV	DESCRIPTION	APPROVED	DATE
-	1	PRODUCTION	YI.S.	1-24-11



NOTE: UNLESS OTHERWISE SPECIFIED

- ALL RESISTORS ARE IN OHMS, 0603.
ALL CAPACITORS ARE IN MICROFARADS, 0603.
- INSTALL SHUNTS AS SHOWN.

CURRENT SENSE CONNECTIONS

CONFIGURATION	R1,R2	R7,R15	R6,R29	R30,R34	R10,R16	R11,R13	R12,R14	C21,C22	C4,C38	R3,R4	R18	R23	L1,L2
"A" VERSION "R SENSE"	OPT	OPT	0	0	0.002	100	100	1nF	OPT	4.87K	OPT	OPT	0.4uH
"B" VERSION "DCR SENSE"	1.4K	0	OPT	OPT	0	0	1.4K	0.22uF	1.0 uF	4.87K	16.2K	17.4K	0.56uH

NOTE:
FSW = 350 KHz FOR "A" VERSION
FSW = 425 KHz FOR "B" VERSION

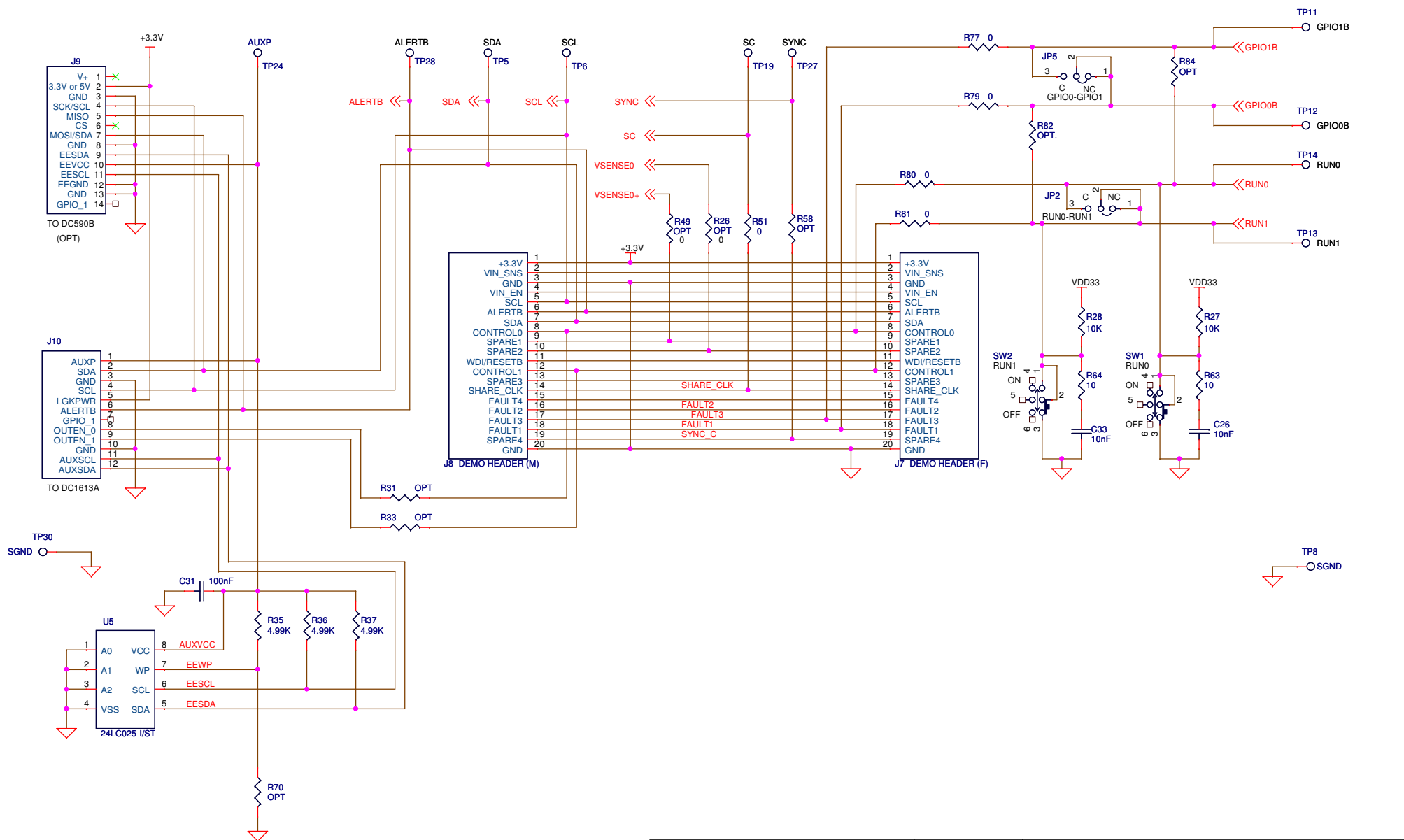
CUSTOMER NOTICE		APPROVALS		LINEAR TECHNOLOGY	
LINEAR TECHNOLOGY HAS MADE A BEST EFFORT TO DESIGN A CIRCUIT THAT MEETS CUSTOMER-SUPPLIED SPECIFICATIONS; HOWEVER, IT REMAINS THE CUSTOMER'S RESPONSIBILITY TO VERIFY PROPER AND RELIABLE OPERATION IN THE ACTUAL APPLICATION. COMPONENT SUBSTITUTION AND PRINTED CIRCUIT BOARD LAYOUT MAY SIGNIFICANTLY AFFECT CIRCUIT PERFORMANCE OR RELIABILITY. CONTACT LINEAR TECHNOLOGY APPLICATIONS ENGINEERING FOR ASSISTANCE.		PCB DES.	HZ		
		APP ENG.	YI.S.		
				TITLE: SCHEMATIC DIGITALLY PROGRAMMABLE DUAL STEP-DOWN DC/DC SUPPLY	
		SIZE	IC NO.	LTC3880EUJ FAMILY DEMO CIRCUIT 1590B	
		SCALE = NONE	DATE:	Wednesday, December 07, 2011	SHEET 1 OF 3

1630 McCarthy Blvd.
Milpitas, CA 95035
Phone: (408)432-1900 www.linear.com
Fax: (408)434-0507
LTC Confidential-For Customer Use Only



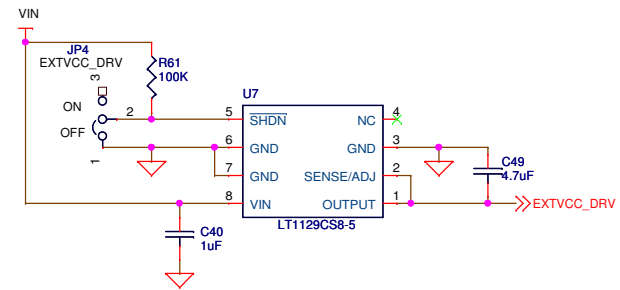
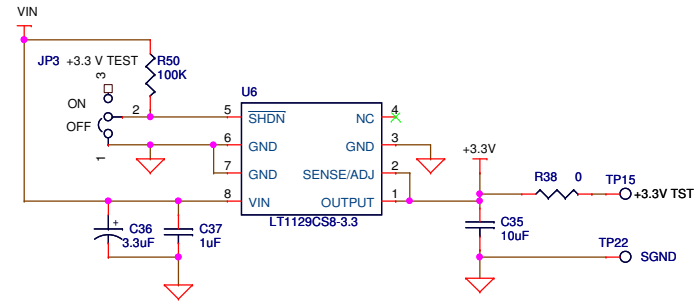
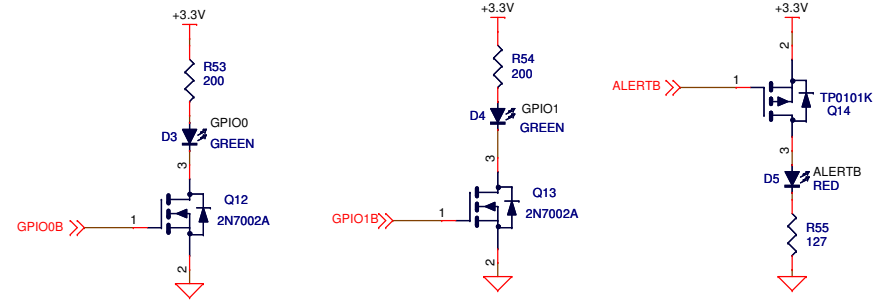
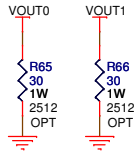
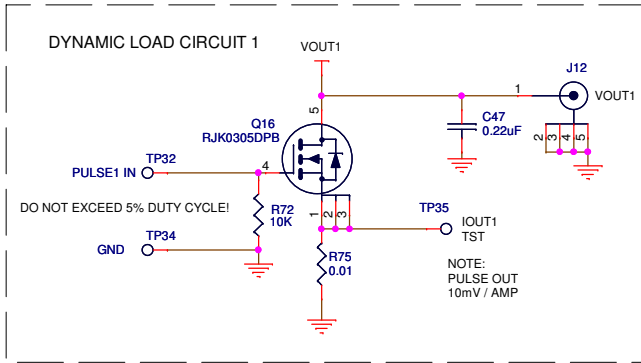
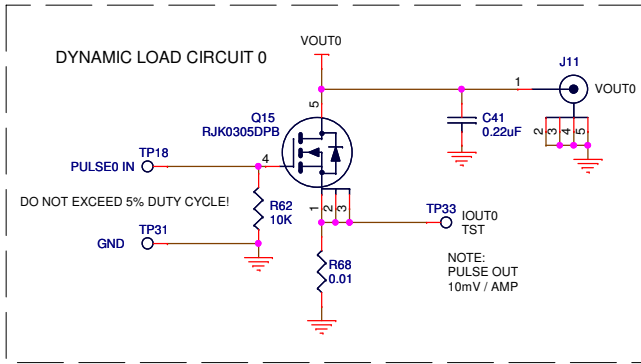
THIS CIRCUIT IS PROPRIETARY TO LINEAR TECHNOLOGY AND SUPPLIED FOR USE WITH LINEAR TECHNOLOGY PARTS.

ALL PARTS ON THIS PAGE ARE FOR DEMO ONLY, NOT NEEDED IN CUSTOMER DESIGN



<p>CUSTOMER NOTICE</p> <p>LINEAR TECHNOLOGY HAS MADE A BEST EFFORT TO DESIGN A CIRCUIT THAT MEETS CUSTOMER-SUPPLIED SPECIFICATIONS; HOWEVER, IT REMAINS THE CUSTOMER'S RESPONSIBILITY TO VERIFY PROPER AND RELIABLE OPERATION IN THE ACTUAL APPLICATION. COMPONENT SUBSTITUTION AND PRINTED CIRCUIT BOARD LAYOUT MAY SIGNIFICANTLY AFFECT CIRCUIT PERFORMANCE OR RELIABILITY. CONTACT LINEAR TECHNOLOGY APPLICATIONS ENGINEERING FOR ASSISTANCE.</p>		<p>APPROVALS</p> <table border="1"> <tr> <td>PCB DES.</td> <td>HZ</td> </tr> <tr> <td>APP ENG.</td> <td>YI S.</td> </tr> <tr> <td></td> <td></td> </tr> <tr> <td></td> <td></td> </tr> <tr> <td></td> <td></td> </tr> </table>		PCB DES.	HZ	APP ENG.	YI S.							<p>1630 McCarthy Blvd. Milpitas, CA 95035 Phone: (408)432-1900 www.linear.com Fax: (408)434-0507 LTC Confidential-For Customer Use Only</p>	
PCB DES.	HZ														
APP ENG.	YI S.														
<p>THIS CIRCUIT IS PROPRIETARY TO LINEAR TECHNOLOGY AND SUPPLIED FOR USE WITH LINEAR TECHNOLOGY PARTS.</p>		<p>SCALE = NONE</p>		<p>LINEAR TECHNOLOGY</p>											
<p>TITLE: SCHEMATIC</p> <p>DIGITALLY PROGRAMMABLE DUAL STEP-DOWN DC/DC SUPPLY</p>		<p>SIZE: N/A</p> <p>IC NO.: LTC3880EUJ FAMILY</p> <p>DEMO CIRCUIT 1590B</p>		<p>REV. 1</p>											
<p>DATE: Wednesday, December 07, 2011</p>		<p>SHEET 2 OF 3</p>		<p></p>											

ALL PARTS ON THIS PAGE ARE FOR DEMO ONLY, NOT NEEDED IN CUSTOMER DESIGN



CUSTOMER NOTICE		APPROVALS		LINEAR TECHNOLOGY		
<p>LINEAR TECHNOLOGY HAS MADE A BEST EFFORT TO DESIGN A CIRCUIT THAT MEETS CUSTOMER-SUPPLIED SPECIFICATIONS; HOWEVER, IT REMAINS THE CUSTOMER'S RESPONSIBILITY TO VERIFY PROPER AND RELIABLE OPERATION IN THE ACTUAL APPLICATION. COMPONENT SUBSTITUTION AND PRINTED CIRCUIT BOARD LAYOUT MAY SIGNIFICANTLY AFFECT CIRCUIT PERFORMANCE OR RELIABILITY. CONTACT LINEAR TECHNOLOGY APPLICATIONS ENGINEERING FOR ASSISTANCE.</p>		PCB DES.	HZ	<p>1630 McCarthy Blvd. Milpitas, CA 95035 Phone: (408)432-1900 www.linear.com Fax: (408)434-0507 LTC Confidential-For Customer Use Only</p>		
		APP ENG.	YI S.			
		<p>THIS CIRCUIT IS PROPRIETARY TO LINEAR TECHNOLOGY AND SUPPLIED FOR USE WITH LINEAR TECHNOLOGY PARTS.</p>		<p>SCALE = NONE</p>		<p>TITLE: SCHEMATIC DIGITALLY PROGRAMMABLE DUAL STEP-DOWN DC/DC SUPPLY</p>
				SIZE	IC NO.	<p>LTC3880EIJ FAMILY DEMO CIRCUIT 1590B</p>
		DATE:	Wednesday, December 07, 2011		REV. 1	
					SHEET 3 OF 3	