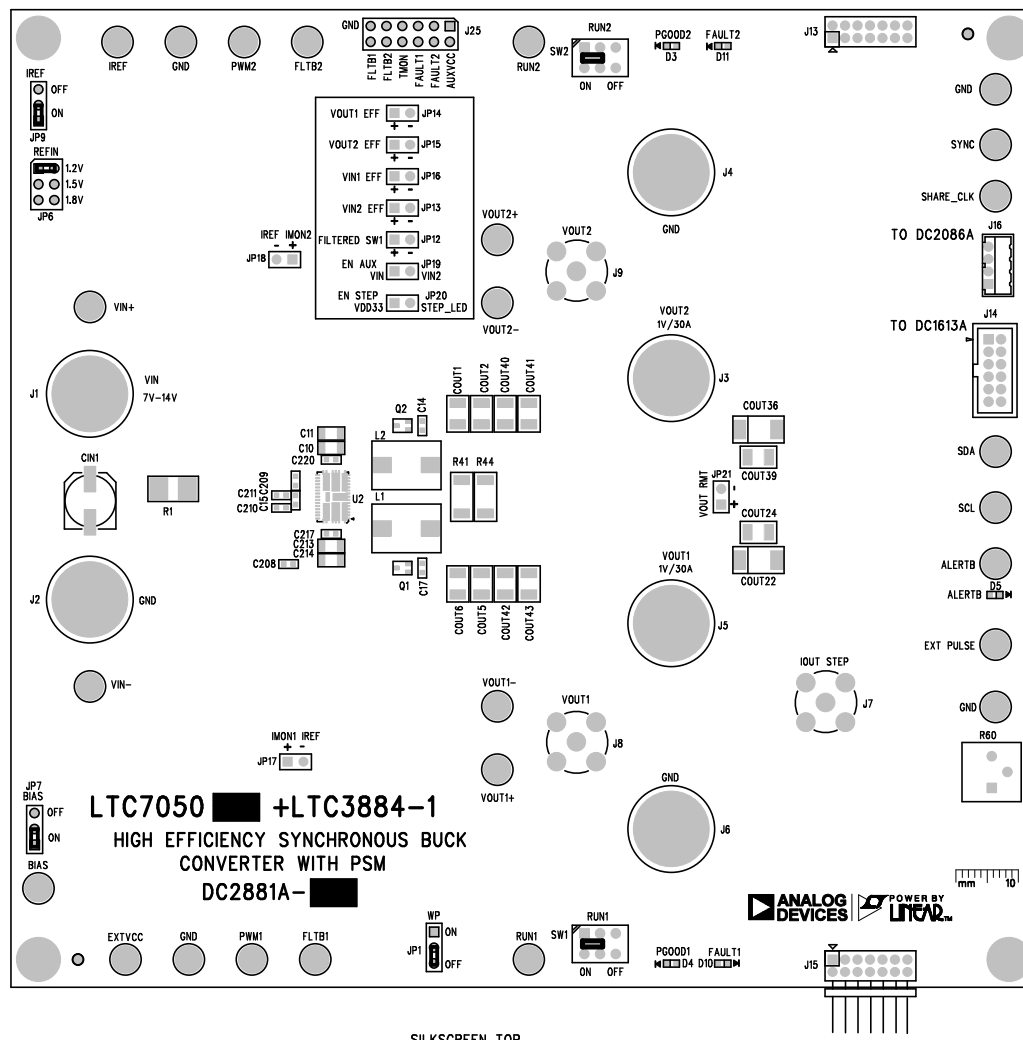
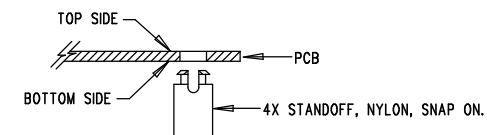


REVISION HISTORY				
ECO	REV	DESCRIPTION	APP. ENG.	DATE
-	3	PRODUCTION	YT	06-14-21



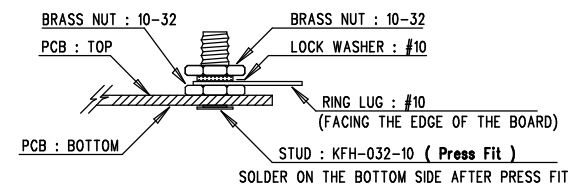
NOTES: UNLESS OTHERWISE SPECIFIED



1. WORKMANSHIP SHALL BE IN ACCORDANCE WITH IPC-A-610.
2. ASSEMBLY PROCESS SHALL INCLUDE: REFLOW SOLDER TOP SIDE SMD. MAXIMUM SOLDER TEMPERATURE IS 240 DEGREES CELSIUS.
3. PARTS TO OMIT WILL BE SPECIFIED ON THE BILL OF MATERIALS. LOCATIONS OF OMITTED PARTS SHALL BE FREE OF SOLDER. MASK THE SOLDER STENCIL WHERE SMT PARTS ARE OMITTED.
4. INSTALL SHUNTS AS SHOWN ON ASSY DRAWING.
5. DEPANELIZE BOARDS AFTER ASSEMBLY AND ROUTE-OUT THE BREAKOUT TABS ON FOUR SIDES OF THE BOARD EDGE.
6. DO NOT APPLY ANY KIND OF ASSEMBLY STAMP OR QA STAMP TO ANY BOARD.
7. INSTALL 4 STANDOFFS AS SHOWN BELOW:



- 8 SEE BILL OF MATERIALS TO MARK THE APPROPRIATE ASSEMBLY TYPE WITH BLACK PERMANENT MARKER.

VERSION	U2
-A	LTC7050
-B	LTC7050-1
-C	LTC7050P



APPROVALS		 		POWER BY LINEAR TM	
PCB DES.	LT	www.analog.com FOR ADI CUSTOMER USE ONLY			
APP ENG.	YT	TITLE: TOP ASSEMBLY DRAWING			
		HIGH EFFICIENCY SYNCHRONOUS BUCK CONVERTER WITH PSM			
		SIZE	IC NO. LTC7050X + LTC3884-1	REV.	
		N/A	DC2881A	3	
SCALE = NONE		FILENAME: DC2881A-3.PCB		SHT 1 OF 2	