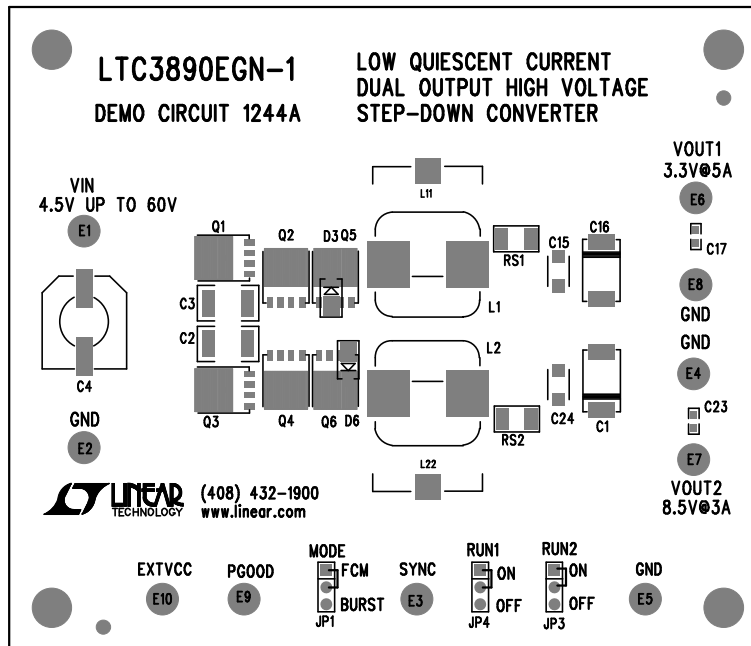


REVISION HISTORY				
ECO	REV	DESCRIPTION	APPR	DATE
1	4	PRODUCTION	VICTOR KH.	10-27-09

NOTES: UNLESS OTHERWISE SPECIFIED

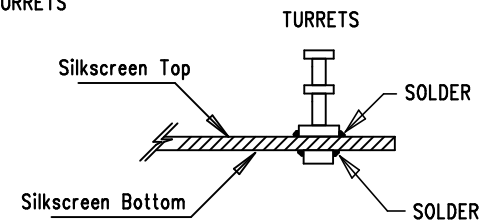


Silkscreen Top

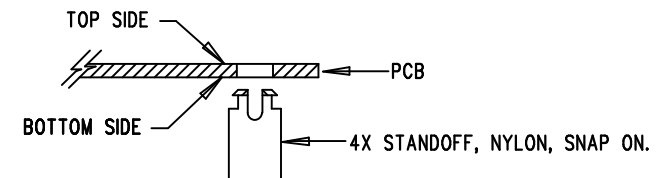
LINEAR TECHNOLOGY
DC1244A-LTC3890EGN-1
LOW QUIESCENT CURRENT
DUAL OUTPUT HIGH VOLTAGE
STEP-DOWN CONVERTER
DATE: 10-27-09


NOTES : Unless Otherwise Specified

1. WORKMANSHIP SHALL BE IN ACCORDANCE WITH IPC-A-610.
2. JUMPER SHUNTS INSTALLATION: JP1- Burst/Sync, J2- Prog. Freq., JP3 - ON, JP4 - ON.
3. INSTALL TURRETS



4. INSTALL 4 STANDOFFS AT 4 CORNERS AS SHOWN BELOW:



APPROVALS			 <div> 1630 MCCARTHY BLVD MILPITAS, CA 95035 PH: (408)432-1900 LTC CONFIDENTIAL- FOR CUSTOMER USE ONLY </div>	
PCB DES.	NAME	DATE		
DES.	ANTONINA K	10-27-09	TITLE: TOP ASSEMBLY DRAWING LOW QUIESCENT CURRENT DUAL OUTPUT HIGH VOLTAGE STEP-DOWN CONVERTER	
ENG.	VICTOR KH.	10-27-09		
			SIZE A	IC NO. LTC3890EGN-1 DEMO CIRCUIT 1244A
			SCALE = NONE	REV. 4
			FILENAME: DC1244A-1.PCB	SHT 1 of 2