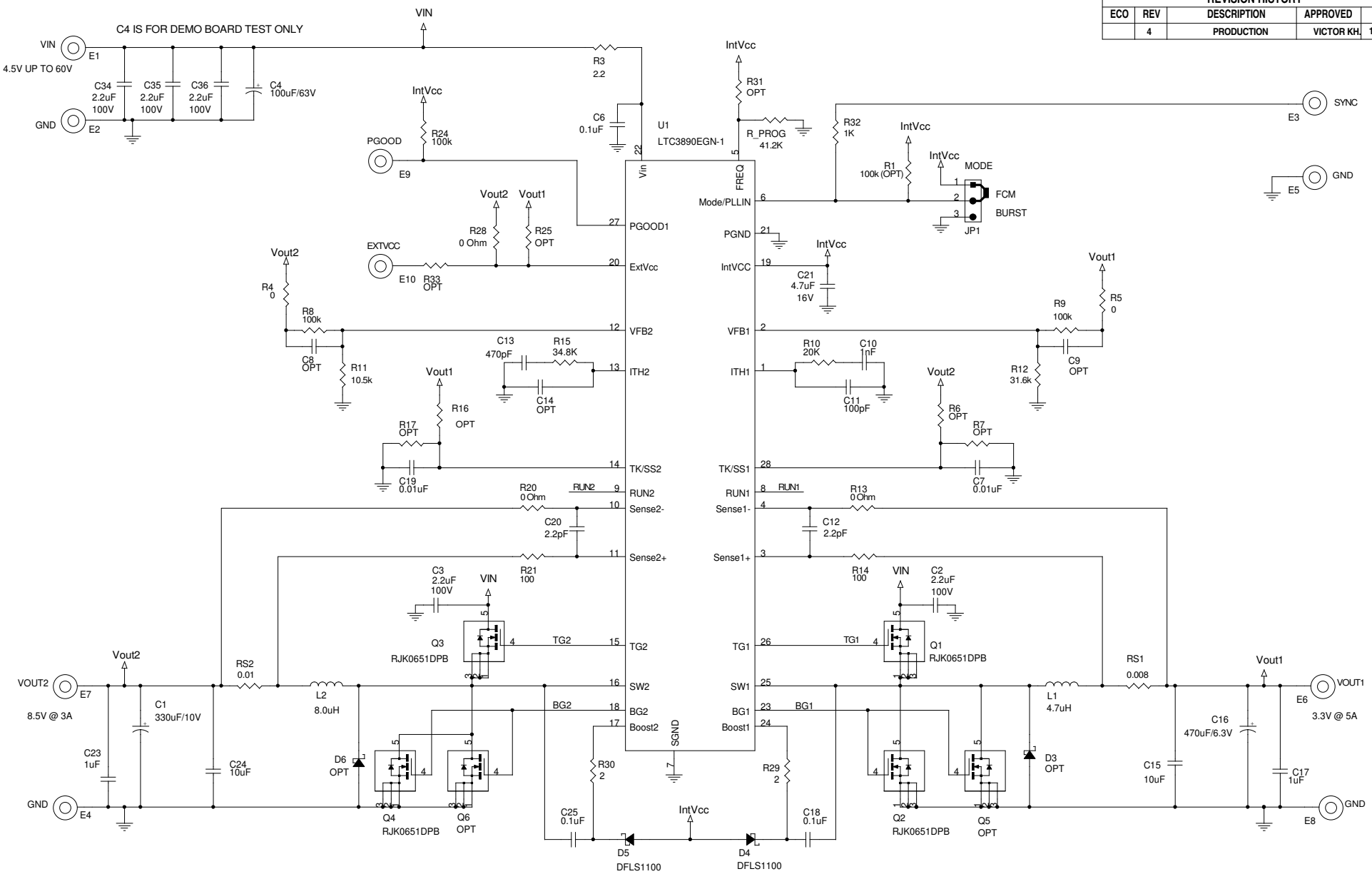
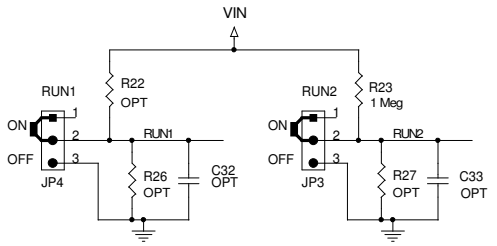


REVISION HISTORY				
ECO	REV	DESCRIPTION	APPROVED	DATE
	4	PRODUCTION	VICTOR KH	10-05-09



NOTE: FOR SKIP MODE OPERATION INSTALL R1 AND REMOVE JP1



CUSTOMER NOTICE		CONTRACT NO.		1630 McCarthy Blvd. Milpitas, CA 95035 Phone: (408)432-1900 Fax: (408)434-0507 LTC Confidential-For Customer Use Only	
LINEAR TECHNOLOGY HAS MADE A BEST EFFORT TO DESIGN A CIRCUIT THAT MEETS CUSTOMER-SUPPLIED SPECIFICATIONS; HOWEVER, IT REMAINS THE CUSTOMER'S RESPONSIBILITY TO VERIFY PROPER AND RELIABLE OPERATION IN THE ACTUAL APPLICATION. COMPONENT SUBSTITUTION AND PRINTED CIRCUIT BOARD LAYOUT MAY SIGNIFICANTLY AFFECT CIRCUIT PERFORMANCE OR RELIABILITY. CONTACT LINEAR TECHNOLOGY APPLICATIONS ENGINEERING FOR ASSISTANCE.		APPROVALS		TITLE: SCHEMATIC LOW QUIESCENT CURRENT DUAL OUTPUT HIGH VOLTAGE STEP-DOWN CONVERTER	
THIS CIRCUIT IS PROPRIETARY TO LINEAR TECHNOLOGY AND SUPPLIED FOR USE WITH LINEAR TECHNOLOGY PARTS.		PCB DES. ANTONIAK		SIZE A IC NO. LTC3890EGN-1 DEMO CIRCUIT 1244A REV 4	
		ENG. VICTOR KH.		DATE: Wednesday, March 03, 2010 SHEET 1 OF 1	