



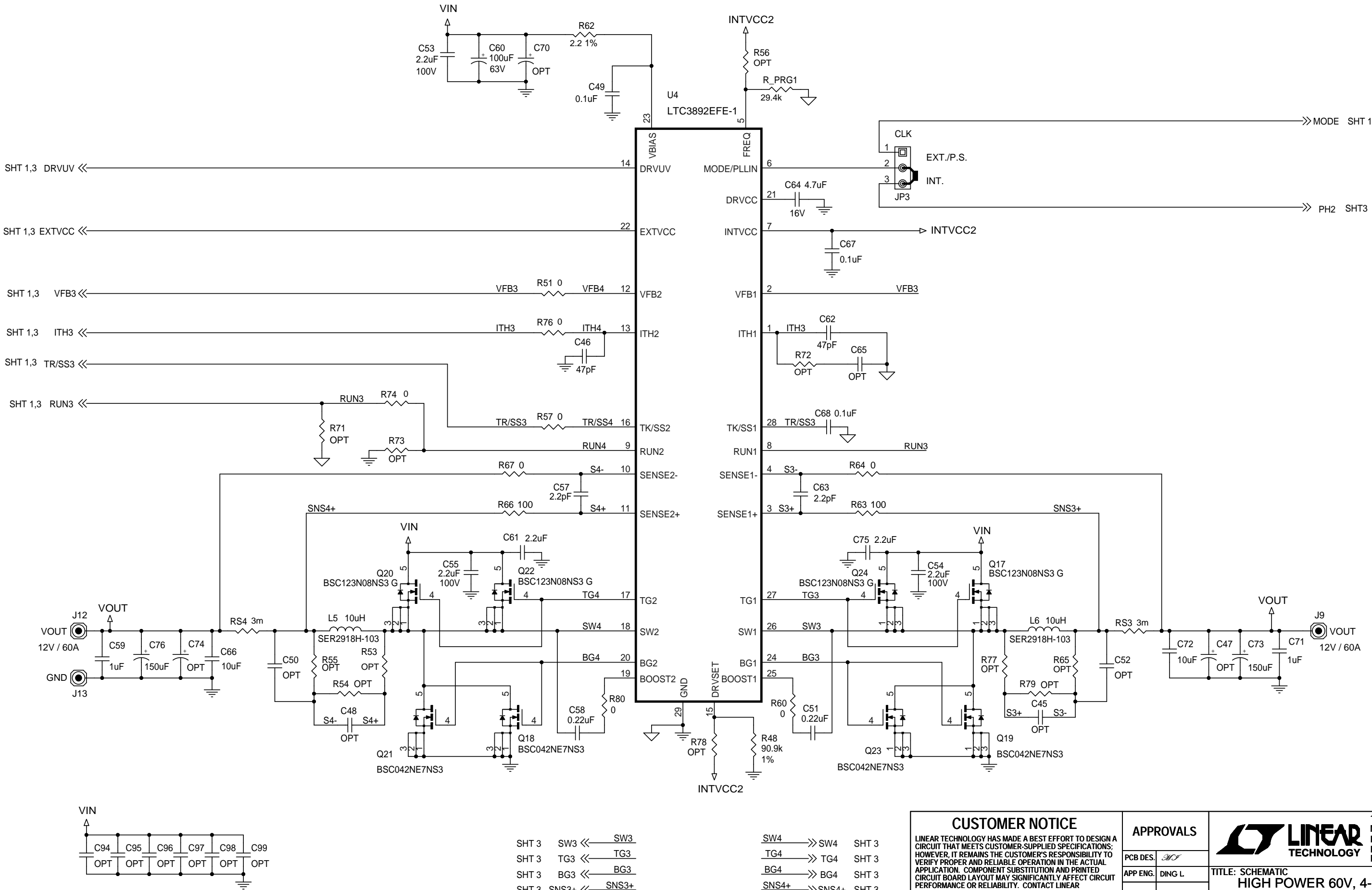


SHT 3 SW2 << SW2
SHT 3 TG2 << TG2
SHT 3 BG2 << BG2
SHT 3 SNS2+ << SNS2+

SW1 >> SW1 SHT 3
TG1 >> TG1 SHT 3
BG1 >> BG1 SHT 3
SNS1+ >> SNS1+ SHT 3

<div>CUSTOMER NOTICE</div> <div>LINEAR TECHNOLOGY HAS MADE A BEST EFFORT TO DESIGN A CIRCUIT THAT MEETS CUSTOMER-SUPPLIED SPECIFICATIONS; HOWEVER, IT REMAINS THE CUSTOMER'S RESPONSIBILITY TO VERIFY PROPER AND RELIABLE OPERATION IN THE ACTUAL APPLICATION. COMPONENT SUBSTITUTION AND PRINTED CIRCUIT BOARD LAYOUT MAY SIGNIFICANTLY AFFECT CIRCUIT PERFORMANCE OR RELIABILITY. CONTACT LINEAR TECHNOLOGY APPLICATIONS ENGINEERING FOR ASSISTANCE.</div> <div>THIS CIRCUIT IS PROPRIETARY TO LINEAR TECHNOLOGY AND SUPPLIED FOR USE WITH LINEAR TECHNOLOGY PARTS.</div>		<div>APPROVALS</div> <table><tr><td>PCB DES.</td><td></td></tr><tr><td>APP ENG.</td><td>DING L</td></tr><tr><td> </td><td> </td></tr><tr><td> </td><td> </td></tr><tr><td> </td><td> </td></tr></table> <div>SCALE = NONE</div>		PCB DES.		APP ENG.	DING L							<div> LINEAR TECHNOLOGY</div> <div>1630 McCarthy Blvd. Milpitas, CA 95035 Phone: (408)432-1900 www.linear.com Fax: (408)434-0507 LTC Confidential-For Customer Use Only</div> <div><div>TITLE: SCHEMATIC HIGH POWER 60V, 4-PHASE SYNCHRONOUS STEP-DOWN SUPPLY</div><table><tr><td>SIZE N/A</td><td>IC NO. LTC3892EFE-1 PCB NO. DEMO CIRCUIT 2190A-A</td><td>REV. 2</td></tr><tr><td colspan="2">DATE: Friday, February 13, 2015</td><td>SHEET 1 OF 3</td></tr></table></div>			SIZE N/A	IC NO. LTC3892EFE-1 PCB NO. DEMO CIRCUIT 2190A-A	REV. 2	DATE: Friday, February 13, 2015		SHEET 1 OF 3
PCB DES.																						
APP ENG.	DING L																					
SIZE N/A	IC NO. LTC3892EFE-1 PCB NO. DEMO CIRCUIT 2190A-A	REV. 2																				
DATE: Friday, February 13, 2015		SHEET 1 OF 3																				



CUSTOMER NOTICE

LINEAR TECHNOLOGY HAS MADE A BEST EFFORT TO DESIGN A CIRCUIT THAT MEETS CUSTOMER-SUPPLIED SPECIFICATIONS; HOWEVER, IT REMAINS THE CUSTOMER'S RESPONSIBILITY TO VERIFY PROPER AND RELIABLE OPERATION IN THE ACTUAL APPLICATION. COMPONENT SUBSTITUTION AND PRINTED CIRCUIT BOARD LAYOUT MAY SIGNIFICANTLY AFFECT CIRCUIT PERFORMANCE OR RELIABILITY. CONTACT LINEAR TECHNOLOGY APPLICATIONS ENGINEERING FOR ASSISTANCE.

THIS CIRCUIT IS PROPRIETARY TO LINEAR TECHNOLOGY AND SUPPLIED FOR USE WITH LINEAR TECHNOLOGY PARTS.

APPROVALS

PCB DES.	<i>[Signature]</i>
APP ENG.	DING L

SCALE = NONE

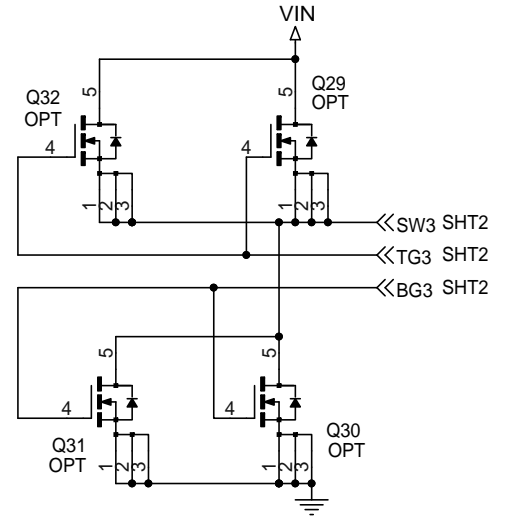
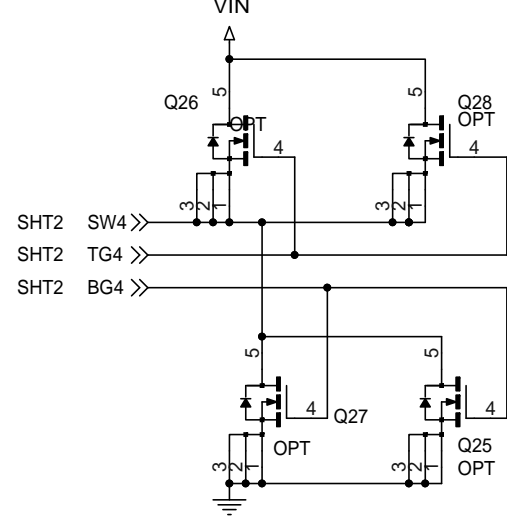
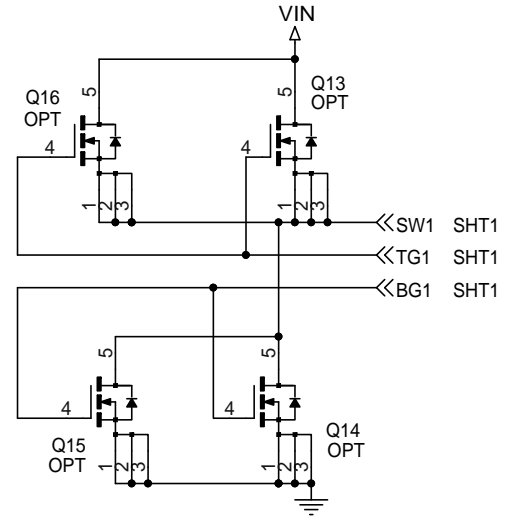
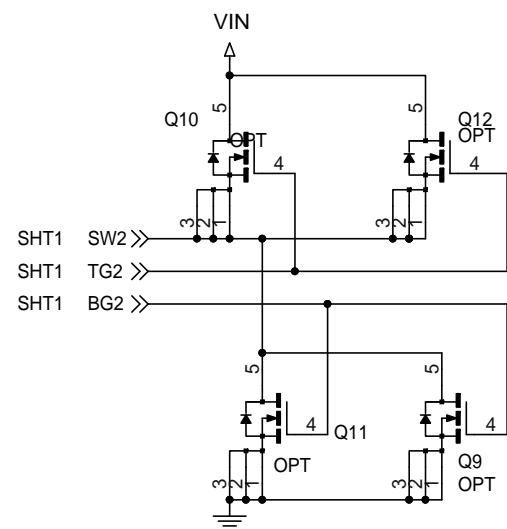


1630 McCarthy Blvd.
Milpitas, CA 95035
Phone: (408)432-1900 www.linear.com
Fax: (408)434-0507
LTC Confidential-For Customer Use Only

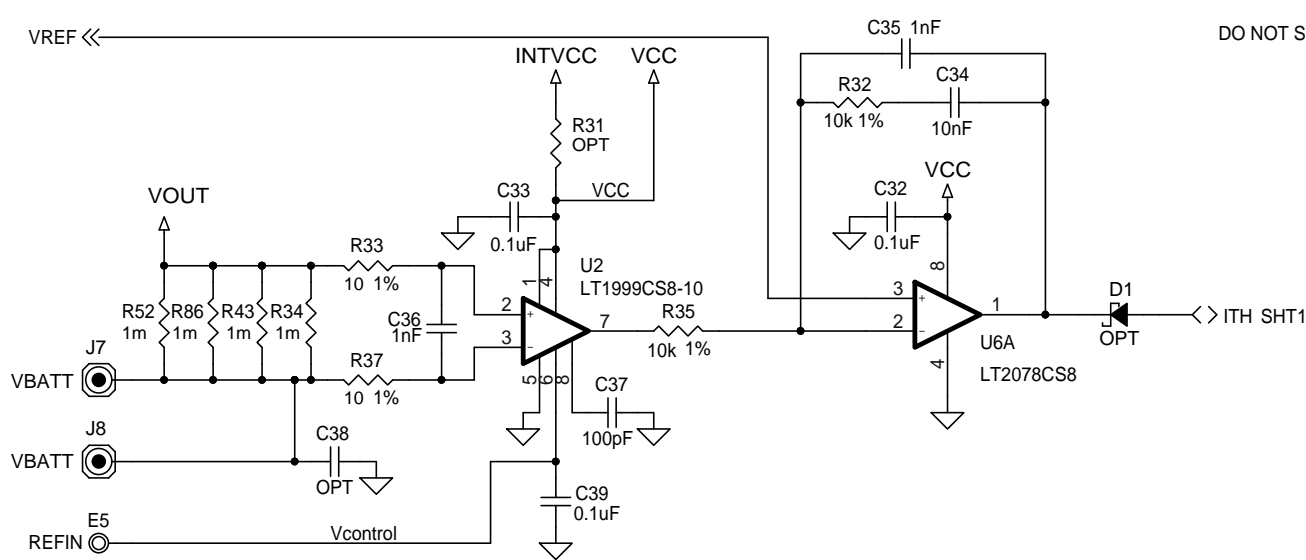
TITLE: SCHEMATIC
**HIGH POWER 60V, 4-PHASE SYNCHRONOUS
STEP-DOWN SUPPLY**

SIZE N/A	IC NO. LTC3892EFE-1 DEMO CIRCUIT 2190A-A	REV. 2
-------------	--	------------------

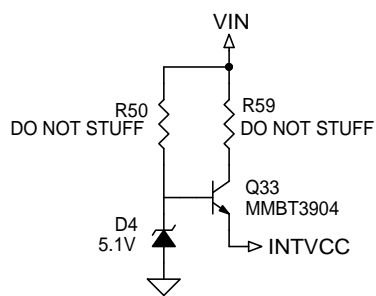
DATE: Monday, November 24, 2014	SHEET 2 OF 3
---------------------------------	--------------



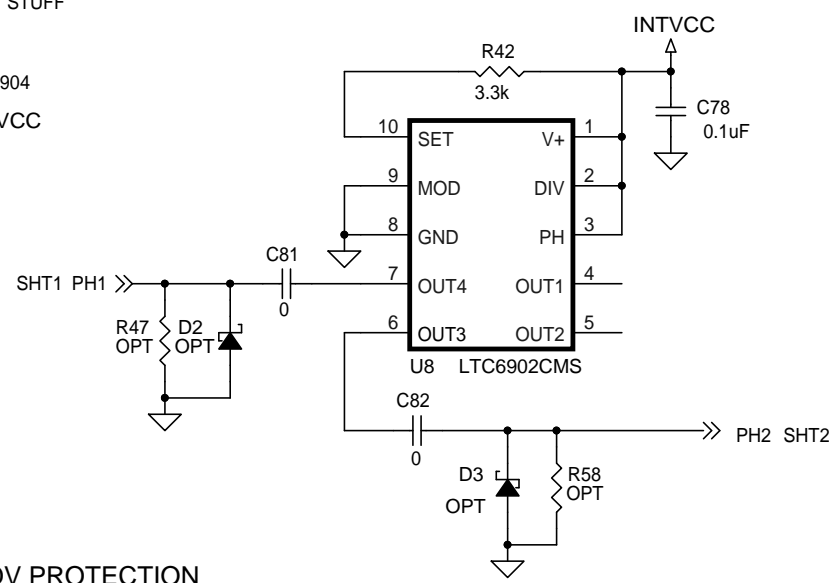
CHARGE/DISCHARGING
CURRENT CONTROL (OPTIONAL)



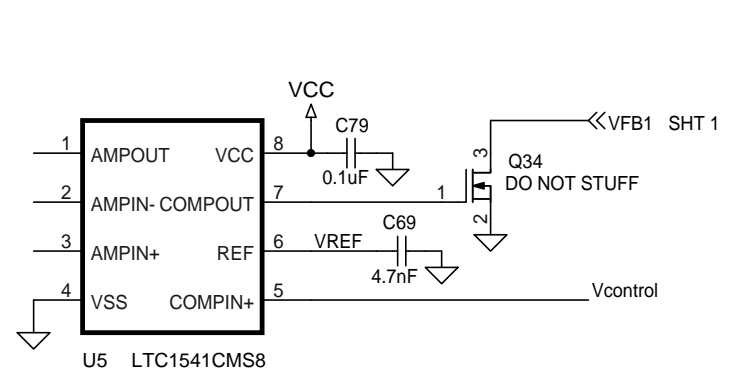
VIN OPT



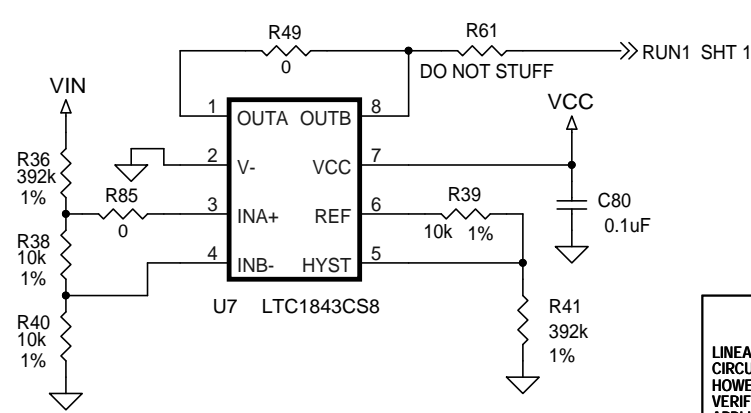
ON BOARD PWM GENERATOR



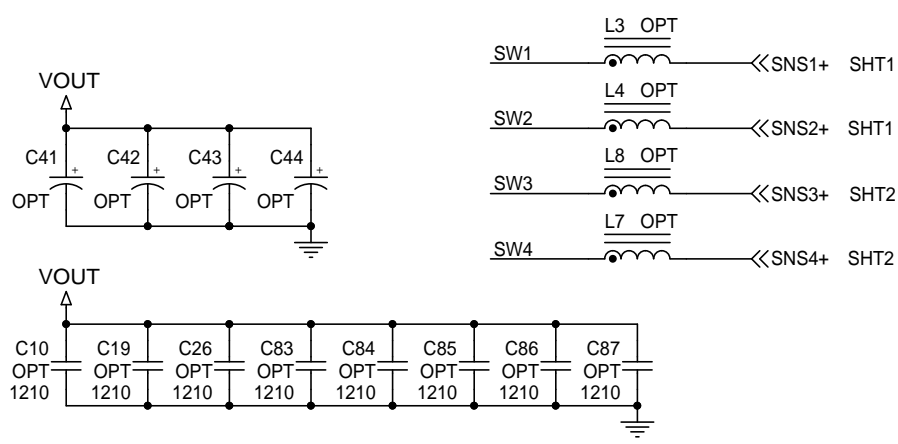
CHARGE/DISCHARGE MODE FB SWITCH OVER



INPUT UV/OV PROTECTION



THIS PAGE IS FOR BI-DIRECTIONAL CHARGER ONLY.



CUSTOMER NOTICE LINEAR TECHNOLOGY HAS MADE A BEST EFFORT TO DESIGN A CIRCUIT THAT MEETS CUSTOMER-SUPPLIED SPECIFICATIONS; HOWEVER, IT REMAINS THE CUSTOMER'S RESPONSIBILITY TO VERIFY PROPER AND RELIABLE OPERATION IN THE ACTUAL APPLICATION. COMPONENT SUBSTITUTION AND PRINTED CIRCUIT BOARD LAYOUT MAY SIGNIFICANTLY AFFECT CIRCUIT PERFORMANCE OR RELIABILITY. CONTACT LINEAR TECHNOLOGY APPLICATIONS ENGINEERING FOR ASSISTANCE.		APPROVALS PCB DES. <i>[Signature]</i> APP ENG. DING L.		1630 McCarthy Blvd. Milpitas, CA 95035 Phone: (408)432-1900 www.linear.com Fax: (408)434-0507 LTC Confidential-For Customer Use Only	
THIS CIRCUIT IS PROPRIETARY TO LINEAR TECHNOLOGY AND SUPPLIED FOR USE WITH LINEAR TECHNOLOGY PARTS.		SCALE = NONE		TITLE: SCHEMATIC HIGH POWER 60V, 4-PHASE SYNCHRONOUS STEP-DOWN SUPPLY	
				SIZE N/A	IC NO. LTC3892EFE-1 DEMO CIRCUIT 2190A-A
				DATE: Monday, November 24, 2014	REV. 2
				SHEET 3 OF 3	