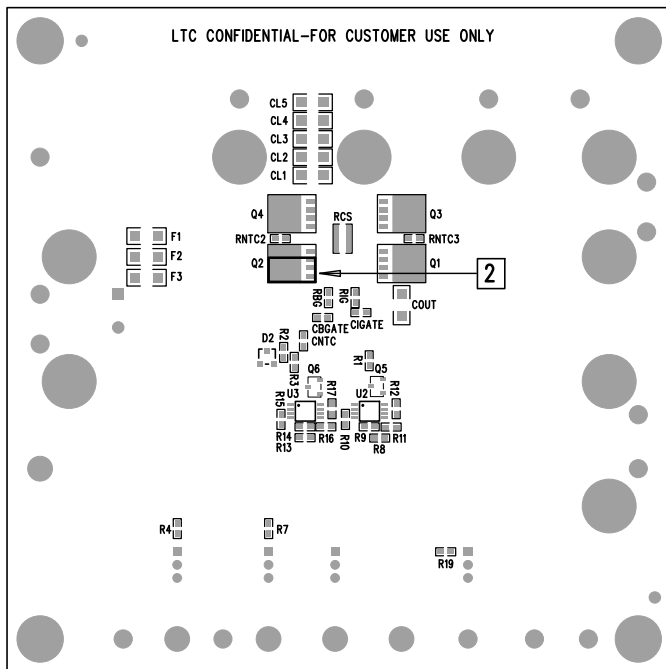


LTC CONFIDENTIAL-FOR CUSTOMER USE ONLY




1. THERE ARE TWO ASSEMBLY VERSIONS FOR THIS DESIGN: -A AND -B
PLEASE SEE BILL OF MATERIALS AND TABLE BELOW TO MARK EACH VERSION

*

ASSY	PROTECT CKT. FOR Q1	REG CKT.FOR Q2	JUMPER	Q2	Q4	ROFB2	RCX	CL	CBGATE
-A	LOADED	LOADED	NO INSTALL	SI7135DP	OPT	84.5k	10.0k	2.2uF	10nF
-B	NOT LOADED	NOT LOADED	INSTALL	LRC-LRZ-2010LF-R000	NO INSTALL	OPT	0 OHM	OPT	NO INSTALL

2. SOLDER PAD LOCATION FOR -B ASSEMBLY OPTION PART# LRC-LRZ-2010LF-R000.
PART NEEDS TO BE SOLDERED TO 3 LOWER PADS INDICATED (TOP PAD CLEAR).

APPROVALS		 <div> 1630 MCCARTHY BLVD MILPITAS, CA 95035 PH: (408)432-1900 www.Linear.com LTC CONFIDENTIAL - FOR CUSTOMER USE ONLY </div>	
PCB DES.	NC		
APP ENG.	DAVID B.	TITLE: BOTTOM ASSEMBLY DRAWING:	
		BATTERY CHARGER AND POWER MANAGEMENT BOARD	
		SIZE	REV.
		N/A	2
		IC NO. LTC4000EUF DEMO CIRCUIT 1830A-A/B	
SCALE = NONE		FILENAME: DC1830A-2.PCB	
		SHT 2 of 2	