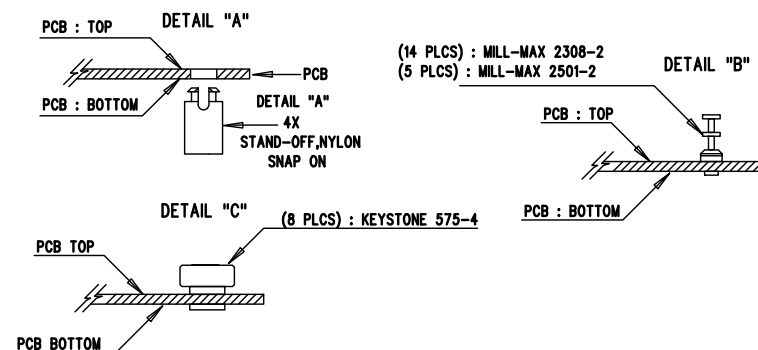
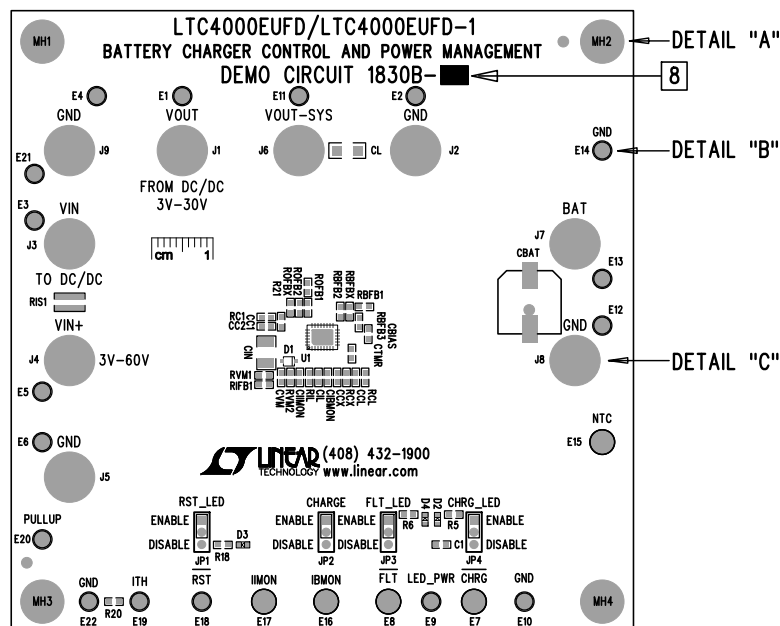


| REVISION HISTORY | | | | |
|------------------|-----|----------------|---------|----------|
| ECO | REV | DESCRIPTION | APPR | DATE |
| - | 1 | PRODUCTION FAB | DAVE B. | 07-03-12 |

NOTES: UNLESS OTHERWISE SPECIFIED

1. WORKMANSHIP SHALL BE IN ACCORDANCE WITH IPC-A-610.
2. ASSEMBLY PROCESS SHALL INCLUDE: REFLOW SOLDER TOP SIDE SMD. MAXIMUM SOLDER TEMPERATURE IS 240 DEGREES CELSIUS.
3. PARTS TO OMIT WILL BE SPECIFIED ON THE BILL OF MATERIALS. LOCATIONS OF OMITTED PARTS SHALL BE FREE OF SOLDER. MASK THE SOLDER STENCIL WHERE SMT PARTS ARE OMITTED.
4. INSTALL SHUNTS AS SHOWN ON ASSY DRAWING.
5. DEPANELIZE BOARDS AFTER ASSEMBLY AND ROUTE-OUT THE BREAKOUT TABS ON FOUR SIDES OF THE BOARD EDGE.
6. DO NOT APPLY ANY KIND OF ASSEMBLY STAMP OR QA STAMP TO ANY BOARD.
7. INSTALL TURRETS, STAND-OFFS AND BANANA JACKS AS SHOWN BELOW:

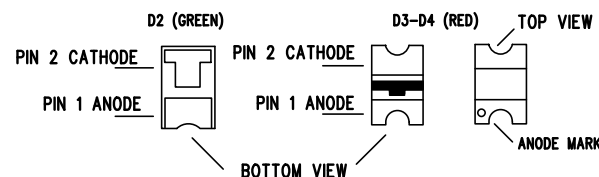


8. THERE ARE FOUR ASSEMBLY VERSIONS FOR THIS DESIGN: -A, -B, -C, AND -D PLEASE SEE BILL OF MATERIALS AND TABLE BELOW TO MARK EACH VERSION CORRECTLY BY BLACK PERMANENT MARKER.

*

| U1 | ASSY | TP CKT. FOR Q1 | REG CKT.FOR Q2 | R21 | Q2/R22 | RIFB1 | RIL | ROFB2 | RCX | CL | CBGATE |
|--------------|------|----------------|----------------|-------|---------------------|-------|-------|-------|-------|-------|--------|
| LTC4000EUF | -A | LOADED | LOADED | OPT | SI7135DP | OPT | 18.2k | 84.5k | 10.0k | 2.2uF | 10nF |
| LTC4000EUF | -B | NOT LOADED | NOT LOADED | 0 OHM | LRC-LRZ-2010LF-R000 | OPT | 18.2k | OPT | 0 OHM | OPT | OPT |
| LTC4000EUF-1 | -C | LOADED | LOADED | OPT | SI7135DP | 68.1k | 2.0k | 84.5k | 10.0k | 2.2uF | 10nF |
| LTC4000EUF-1 | -D | NOT LOADED | NOT LOADED | 0 OHM | LRC-LRZ-2010LF-R000 | 68.1k | 2.0k | OPT | 0 OHM | OPT | OPT |

9. INSTALL LED'S D2, D3 AND D4 AS SHOWN:



| APPROVALS | | LINEAR TECHNOLOGY | |
|-----------|---------|--|--------------------------------|
| PCB DES. | NC | TITLE: TOP ASSEMBLY DRAWING: BATTERY CHARGER CONTROL AND POWER MANAGEMENT | |
| APP ENG. | DAVE B. | | |
| | | SIZE | IC NO. LTC4000EUF/LTC4000EUF-1 |
| | | N/A | DEMO BOARD 1830B-A/B/C/D |
| | | SCALE = NONE | REV. 1 |
| | | FILENAME: DC1830B-1.PCB | SHT 1 of 2 |