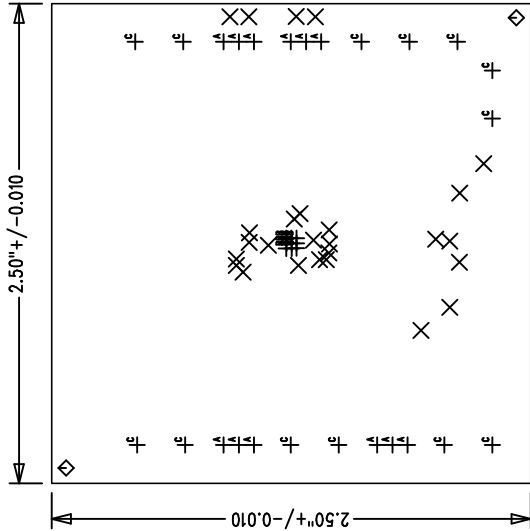
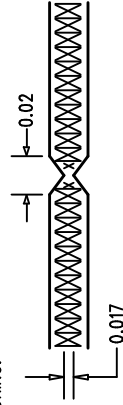


REVISIONS		
REV	DESCRIPTION	DATE



NOTES : Unless Otherwise Specified

1. FAB PER IPC-A-600.
2. MATERIAL: EPOXY FIBERGLASS, NEMA GRADE FR-4.
2 OZ. COPPER FINISH ON OUTER LAYERS.
1 OZ. COPPER FINISH ON INNER LAYERS.
THICKNESS .062 +/- .006 TOTAL OF 4 LAYERS.
FLAMABILITY RATING: 94 V-0 MINIMUM .
DIMENSIONS AND TOLERANCES SHOWN.
0.000 ARE PRIMARY DATUMS.
3. SIZE: DRILLING: DRILL HOLES PER SCHEDULE. PLATE THROUGH HOLES WITH COPPER, .001 INCH THICK MIN. ALL HOLE SIZES ARE SPECIFIED AFTER PLATING.
HOLE LOCATION TOLERANCES ARE +/- .003 INCH IN RELATION TO CENTER
5. FINISH: SMOBC USING LPI BOTH SIDES COLOR GREEN.
SILVER IMMERSION BOTH SIDES.
6. SILKSCREEN : USING WHITE NON-CONDUCTIVE EPOXY INK.
7. DO NOT ALTER ARTWORK e.g. TO ADD LOGO OR DATE CODE.
8. SCORING:



Fabrication Drawing

SIZE	QTY	SYM	PLTD	TOL
0.015	26	X	YES	+/-0.003
0.07	2	◇	NO	+/-0.003
0.035	12	+	YES	+/-0.003
0.01	9	-	YES	+/-0.003
0.065	13	-	YES	+/-0.003

UNLESS OTHERWISE SPECIFIED
DIMENSIONS ARE IN INCHES
TOLERANCES ON ANGLE ± 1
2 PLACE ± .01 3 PLACE ± .005
INTERPRET DIM AND TOL
PER ASME Y14.5M - 1994

APPROVALS		INIT		DATE	
DRAWN	CHECK				
DESIGN	ENGR	Helen	G.Mark	4/6/06	4/6/06
SCALE = NONE		DES-250		SHT 1 of 1	

LINEAR TECHNOLOGY

1630 McCarthy Blvd.
Milpitas, CA 95035
PH: (408)432-1900

TITLE: LTC400EUF
Single Cell 4.2V@2Amp Switching Battery Charger

SIZE A DEMO DC930A REV. A