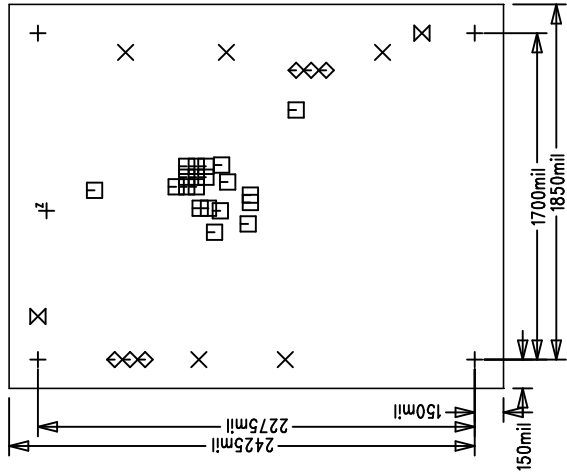
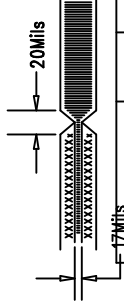


Linear Tech. Corp.
Demo Circuit 606 RevA



NOTES: Unless Otherwise Specified

1. MATERIAL: 4 LAYERS, 0.062" THK. FR-4 GLASS EPOXY 2 OZ. COPPER CLAD.
2. ALL HOLE SHALL BE PLATED THRU.
3. PLATE THRU HOLES WITH COPPER .0014 MIN. THICKNESS. ALL HOLE SIZES IN HOLE TABLE ARE AFTER PLATING.
4. SILKSCREEN: WITH WHITE EPOXY NON-CONDUCTIVE INK.
5. NO SILKSCREEN ALLOWED ON PADS LANDS.
6. SOLDER MASK: LPI, GREEN.
7. NO BLOCK SOLDERMASKING OF PADS ROWS.
8. DO NOT MAKE CHANGES ON SILKSCREEN, SUCH AS COMPANY LOGO, QC STAMPS.
9. DO NOT PLATE TOOLING(3PLCS) AND SCORING(26PLCS) HOLES. (Reference Drawing Dwg No. DC205A)
10. SCORING:



SIZE	QTY	SYM	PLTD
125	4	+	PLTD
94	5	×	PLTD
10	20	□	PLTD
31	6	◇	PLTD
70	2	⊗	NPLTD
35	1	Z	PLTD

Fabrication Drawing

APPROVALS		LINEAR TECHNOLOGY		1630 McCarthy Blvd. Milpitas, CA 95035 PH: (408)432-1900	
DRAWN	INIT	DATE			
CHECK					
DESIGN	RmB		TITLE: LTC4056ETS-4.2		
ENGR	JShannon		Li-Ion Charger with Termination		
			SIZE	Demo Circuit 606	REV. A
			NONE		
SCALE = NONE			DES-230577		
			SHT 1 of 1		