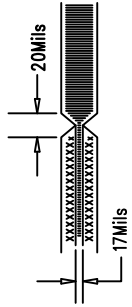


REV	APPR	DATE
-----	------	------


NOTES: UNLESS OTHERWISE SPECIFIED:

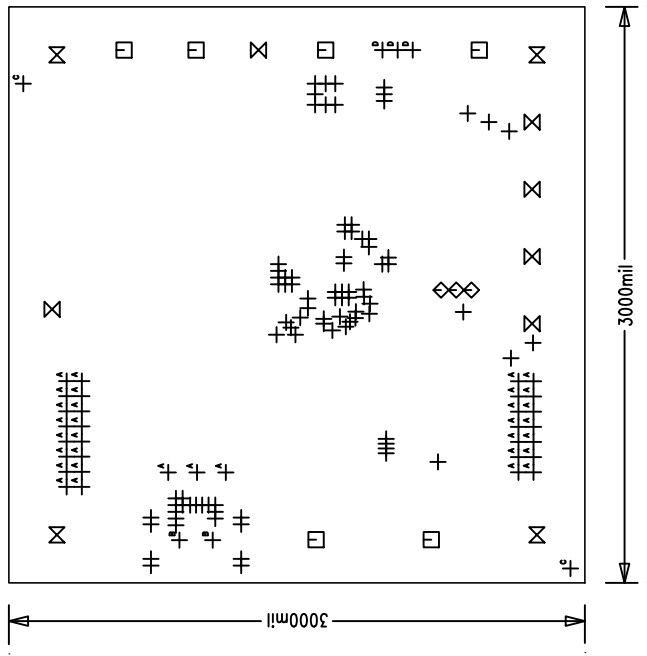
1. ARTWORK P/N DEMO CIRCUIT 1396A
2. FAB PER IPC-A-600. 4-Layers.
3. MATERIAL: EPOXY FIBERGLASS, NEMA GRADE FR-4
 .062 +/- .005 INCH THICKNESS WITH 2 OZ.
 COPPER FINISH ON TWO OUTER LAYERS AND
 1 OZ. COPPER ON TWO INTERNAL LAYERS.
 FLAMMABILITY RATING: 94 V-2 MINIMUM .
4. SIZE: CUT TO DIMENSIONS AND TOLERANCES SHOWN.
5. BOARD: SELECTIVE PLATED BOARD. SOLDER
 MASK OVER BARE COPPER, COLOR, GREEN LPI.
 GOLD IMMERSION (ENIG) BOTH SIDES.
 SILKSCREEN BOTH SIDES WITH WHITE NON-
 CONDUCTIVE INK.
 PLATE THRU ALL HOLES WITH COPPER
 MIN. PLATING THICKNESS: 1 OZ. EXCEPT
 WHERE PLATING NOT REQUIRED
6. DRILL: ALL HOLES SHALL BE DRILLED +/- .003 INCH
 WITH RESPECT TO CTR. OF DRILLED PAD.
 ALL HOLES FINISHED SIZE AFTER PLATING.
7. DO NOT ALTER ARTWORK e.g. TO ADD LOGO, DATE CODE OR
 ELECTRICAL TEST STAMP, BUT YOU MAY MODIFY PAD SIZE TO
 MEET END FINISH.
8. SCORING FOR PANELIZED PCB: "PRODUCTION RUN ONLY"



9. DO NOT ALTER SOLDER MASK MAINTAIN .003" OVERSIZE ON SMT PADS. A .005" WEBBING IS REQUIRED BETWEEN SMD PADS.
10. PCB'S ARE TO BE ROHS COMPLIANT.
11. BOARDS WILL BE SERIALIZED USING BOTTOM SILKSCREEN DIGITS 88888

Fabrication Drawing

<div><div></div><div><div>1630 McCarthy Blvd. Milpitas, CA 95035 PH: (408)432-1900</div></div></div>			<div><div>TITLE:</div><div>LT04099EPDC High Efficiency 12C Controlled USB Power Manager/Charger with Overvoltage Protection</div></div>			SIZE		REV. A																								
						NONE		DC1396A																								
<div><div>APPROVALS</div><table><tr><td></td><td>INIT</td><td>DATE</td></tr><tr><td>DRAWN</td><td>NJC</td><td></td></tr><tr><td>CHECK</td><td></td><td></td></tr><tr><td>DESIGN</td><td>LMJ</td><td></td></tr><tr><td>ENGR</td><td>G.Barbetti</td><td></td></tr><tr><td></td><td></td><td></td></tr><tr><td></td><td></td><td></td></tr></table></div>							INIT	DATE	DRAWN	NJC		CHECK			DESIGN	LMJ		ENGR	G.Barbetti								SCALE = NONE		DFS-23xxxx		SHT 1 of 1	
							INIT	DATE																								
						DRAWN	NJC																									
						CHECK																										
						DESIGN	LMJ																									
ENGR	G.Barbetti																															



Fabrication Drawing

Linear Tech. Corp.
Demo Circuit 1396A

SIZE	QTY	SYM	PLATED	TOL
94	6	□	YES	+/-0.0
31	3	◇	YES	+/-0.0
63	6	⊠	YES	+/-0.0
10	88	+	YES	+/-0.0
190	4	⊠	YES	+/-0.0
35	33	⊠ ^A	YES	+/-0.0
35	2	⊠ ^B	NO	+/-0.0
72	2	⊠ ^C	YES	+/-0.0
311	3	⊠ ^D	YES	+/-0.0