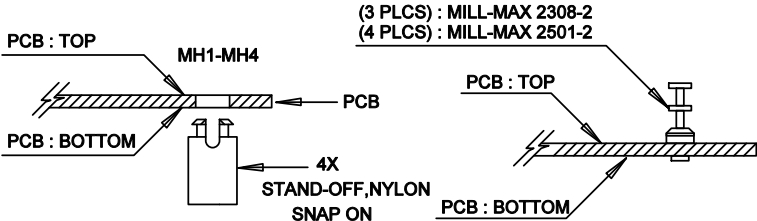
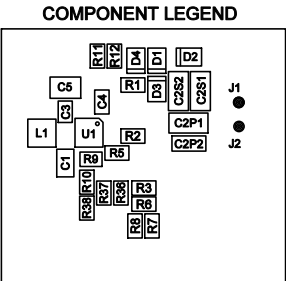
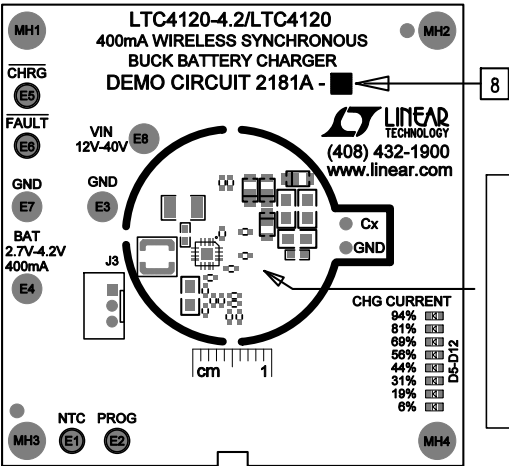


REVISION HISTORY				
ECO	REV	DESCRIPTION	APPR	DATE
-	3	PRODUCTION	GEORGE B	7-17-14


**NOTES: UNLESS OTHERWISE SPECIFIED**

1. WORKMANSHIP SHALL BE IN ACCORDANCE WITH IPC-A-610.
2. ASSEMBLY REFLOW PROFILE SHALL BE IN ACCORDANCE WITH J-STD-020 WITH MAXIMUM SOLDER TEMPERATURE OF 250 DEGREES CELSIUS.
3. PARTS TO OMIT WILL BE SPECIFIED ON THE BILL OF MATERIALS. LOCATIONS OF OMITTED PARTS SHALL BE FREE OF SOLDER. MASK THE SOLDER STENCIL WHERE SMT PARTS ARE OMITTED.
4. INSTALL SHUNTS AS SHOWN ON ASSY DRAWING.
5. DEPANELIZE BOARDS AFTER ASSEMBLY AND ROUTE-OUT THE BREAKOUT TABS ON FOUR SIDES OF THE BOARD EDGE.
6. APPLY ASSEMBLY STAMP OR QA STAMP TO BOTTOM OF BOARD (UNSHOWY AREA).
7. INSTALL TURRETS AND 4 STANDOFFS AT LOCATIONS SHOWN BELOW:



8. THERE ARE TWO ASSEMBLY VERSIONS FOR THIS DESIGN: -A AND -B  
PLEASE SEE BILL OF MATERIALS AND TABLE BELOW TO MARK EACH VERSION  
CORRECTLY BY BLACK PERMANENT MARKER.

ASSY	U1	R9	R10
-A	LTC4120EUD - 4.2	OPEN	0 Ohm
-B	LTC4120EUD	1.40MEG	1.05MEG

APPROVALS		 <div style="display: inline-block; vertical-align: middle; text-align: left;"><div>1630 MCCARTHY BLVD MILLPITAS, CA 95035 PH: (408) 522-1000 <a href="http://www.Linear.com">www.Linear.com</a> LTC CONFIDENTIAL- FOR CUSTOMER USE ONLY</div></div>			
PCB DES.	NC				
APP ENG.	GEORGE B.	<b>TITLE: TOP ASSEMBLY DRAWING:</b>  400mA WIRELESS SYNCHRONOUS BUCK BATTERY CHARGER			
		SIZE	IC NO.	LTC4120EUD-4.2 / LTC4120EUD DEMO CIRCUIT 2181A-AB	REV.  3
		N/A			
SCALE = NONE		FILENAME: DC2181A-3.PCB		SHT 1 of 2	