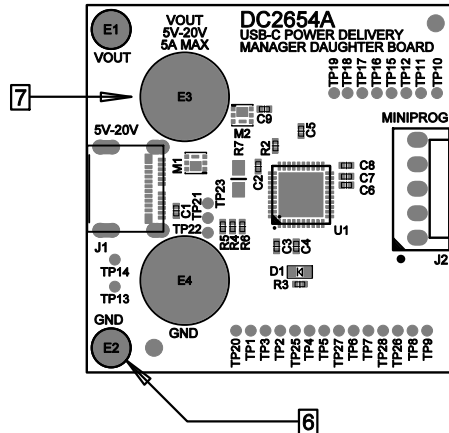
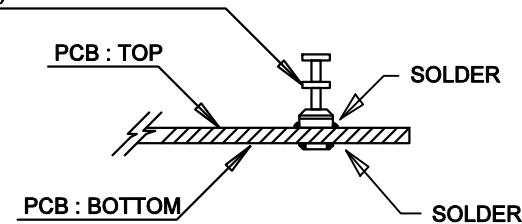


REVISION HISTORY				
ECO	REV	DESCRIPTION	APPR	DATE
-	03	PRODUCTION	ZP	05-31-19

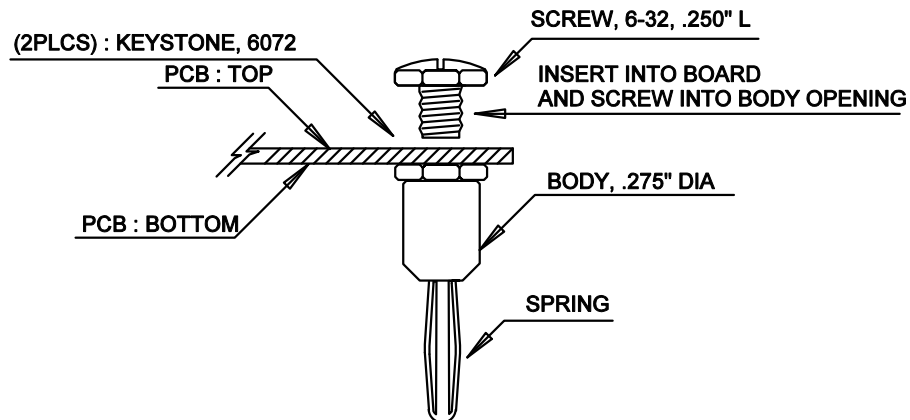
NOTES: UNLESS OTHERWISE SPECIFIED

1. WORKMANSHIP SHALL BE IN ACCORDANCE WITH IPC-A-610.
2. ASSEMBLY PROCESS SHALL INCLUDE: REFLOW SOLDER TOP SIDE SMD.
MAXIMUM SOLDER TEMPERATURE IS 240 DEGREES CELCIUS.
3. PARTS TO OMIT WILL BE SPECIFIED ON THE BILL OF MATERIALS
LOCATIONS OF OMITTED PARTS SHALL BE FREE OF SOLDER.
MASK THE SOLDER STENCIL WHERE SMT PARTS ARE OMITTED.
4. DEPANELIZE BOARDS AFTER ASSEMBLY AND ROUTE-OUT THE BREAKOUT
TABS ON FOUR SIDES OF THE BOARD EDGE.
5. APPLY ASSEMBLY STAMP OR QA STAMP TO BOTTOM OF BOARD (UNSHOWY AREA).
6. INSTALL TURRETS AS SHOWN BELOW:



(2PLCS) : MILL-MAX 2308



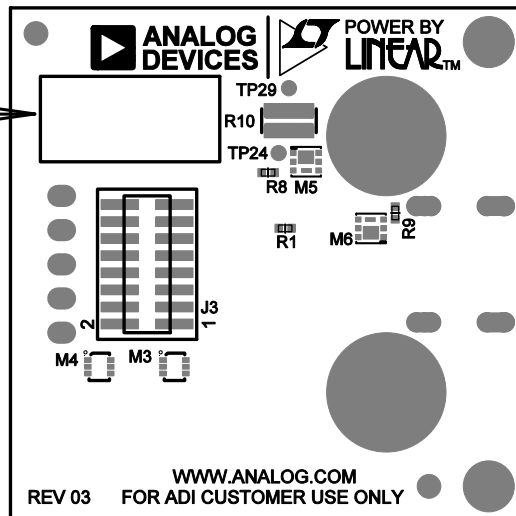
- 7. INSTALL INTERNAL THREAD BANANA PLUG AS SHOWN BELOW:**
- TIN PLATE LUG IS NOT USED, CAN BE DISCARDED.
 - SCREW IS INSERTED AS SHOWN.





- 8. APPLY DEMO S/N AT AREA ON BOTTOM SIDE AS SHOWN ON SHEET 2.**

APPROVALS		 ANALOG DEVICES		 POWER BY LINEAR		1830 MCCARTHY BLVD MILPITAS, CA 95035 PH: (408)432-1900 WWW.ANALOG.COM	
PCB DES.	NC	TITLE: TOP ASSEMBLY DRAWING: USB-C POWER DELIVERY MANAGER DAUGHTER BOARD					
APP ENG.	ZP						
		SIZE N/A	IC NO. LTC4162 DEMO CIRCUIT 2654A			REV. 03	
SCALE = NONE						SHT 1 of 2	

7 DEMO S/N LABEL
APPLY IN THIS AREA



APPROVALS		 ANALOG DEVICES		 POWER BY LINEAR	1630 MCCARTHY BLVD MILPITAS, CA 95035 PH: (408)432-1900 WWW.ANALOG.COM
NC		TITLE: BOTTOM ASSEMBLY DRAWING: USB-C POWER DELIVERY MANAGER DAUGHTER BOARD			
ZP					
		SIZE	IC NO.	LTC4162	REV.
		N/A		DEMO CIRCUIT 2654A	03
SCALE = NONE					SHT 2 of 2