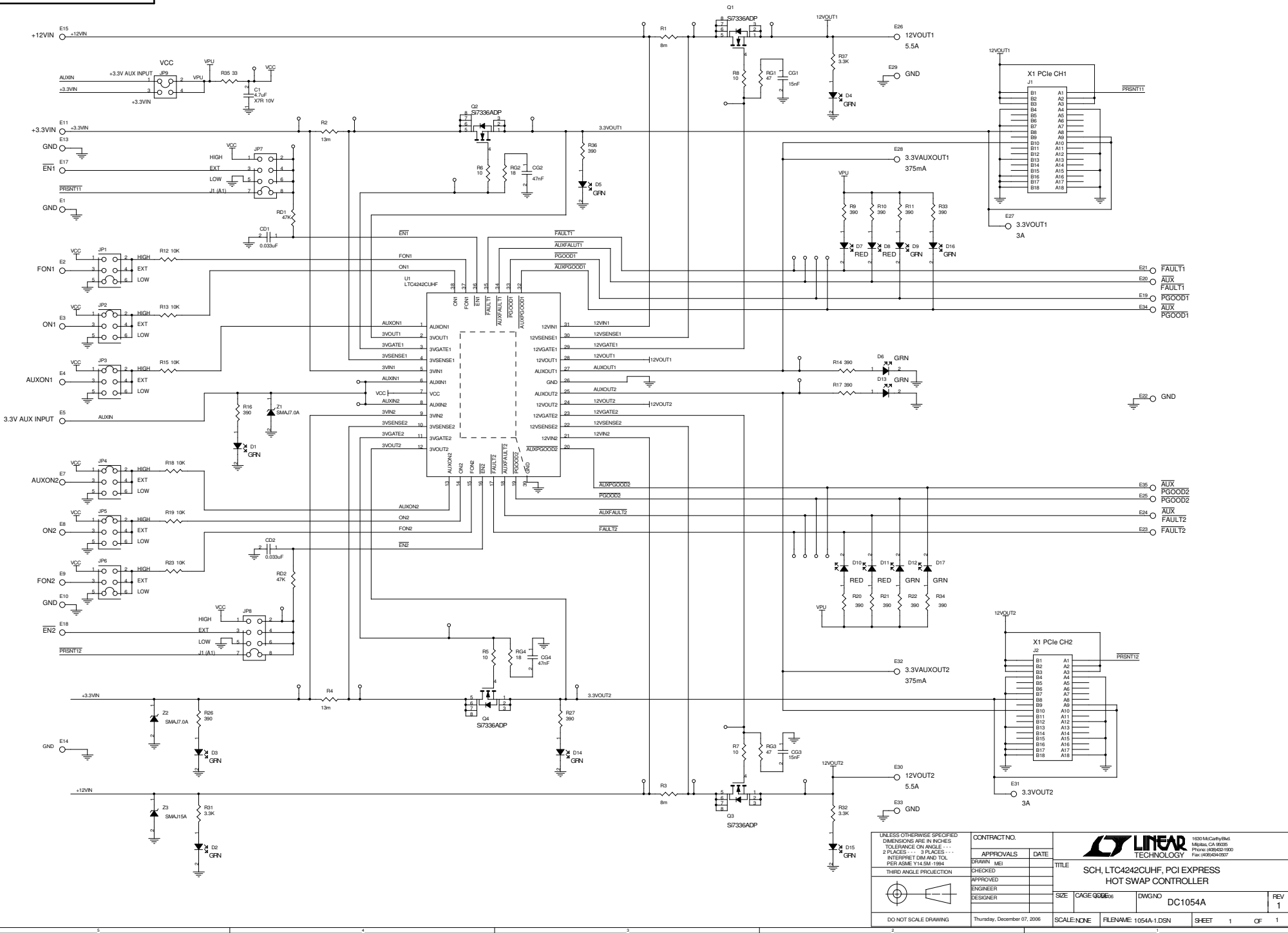


This circuit is proprietary to Linear Technology and used for use with Linear Technology parts.

Customer Notice: Linear Technology has made a best effort to design a circuit that meets customer-supplied specifications; however, it remains the customer's responsibility to verify proper and reliable operation in the actual application. Component substitution and printed circuit board layout may significantly affect circuit performance or reliability. Contact Linear Applications Engineering for assistance.

REVISION HISTORY			
ECO	REV	DESCRIPTION	DATE
	1	PROT0	01/26/06



UNLESS OTHERWISE SPECIFIED
DIMENSIONS ARE IN INCHES
TOLERANCE ON ANGLES - -
2 PLACES - - - 3 PLACES - - -
INTERPRET DIM AND TOL
PER ASME Y14.5M-1994

THIRD ANGLE PROJECTION

CONTRACT NO.

APPROVALS	DATE
DRAWN: MEI	
CHECKED:	
APPROVED:	
ENGINEER:	
DESIGNER:	

TITLE

SCH, LTC4242UHF, PCI EXPRESS
HOT SWAP CONTROLLER

SIZE	CAGE 000000	DWGNO	DC1054A	REV	1
------	-------------	-------	---------	-----	---

SCALE: NONE

FILENAME: 1054A-1.DSN

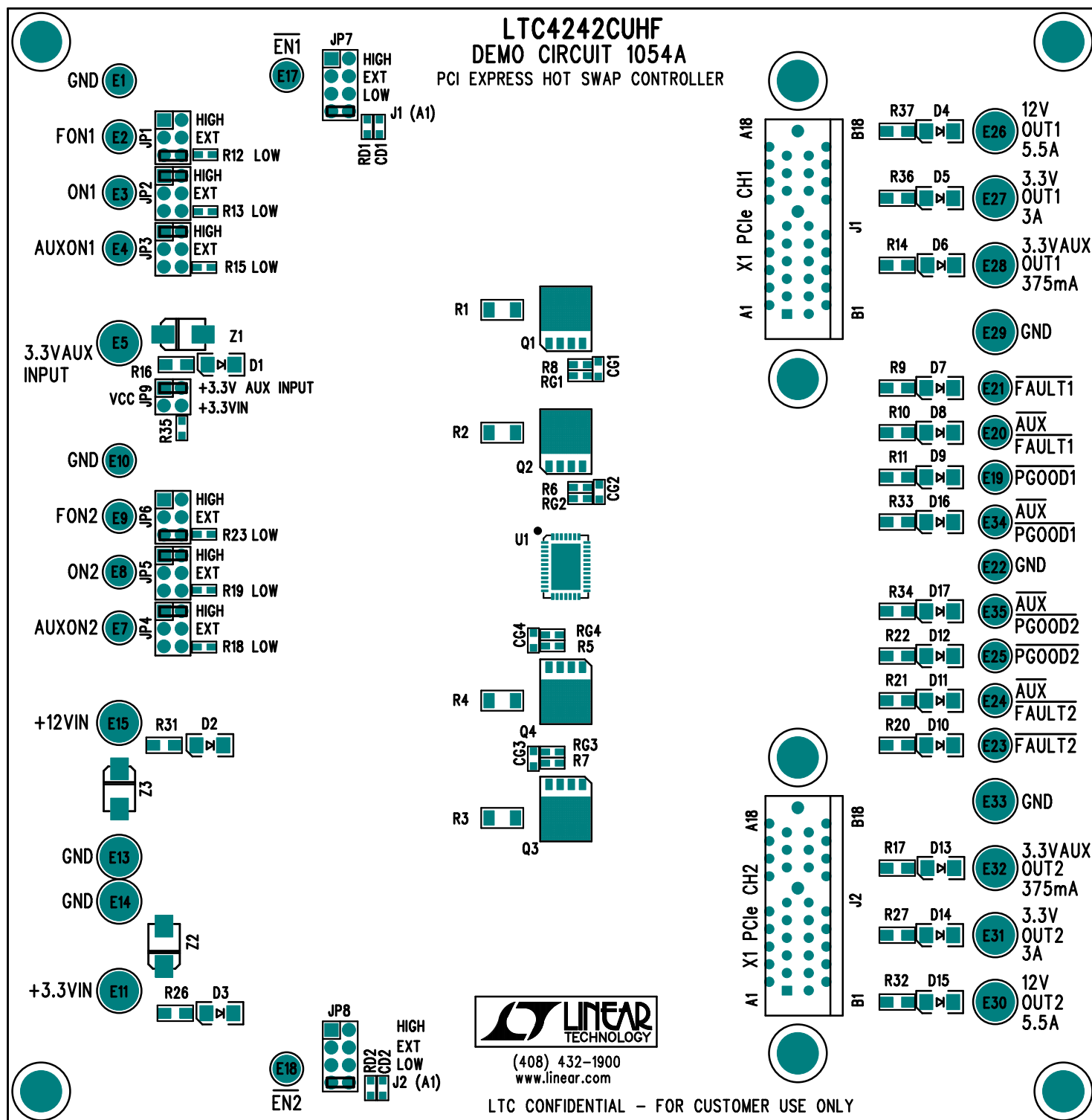
SHEET 1 OF 1

1020 McCarty Blvd
Milpitas, CA 95035
Phone: (408) 521-1000
Fax: (408) 521-0907

LINEAR
TECHNOLOGY

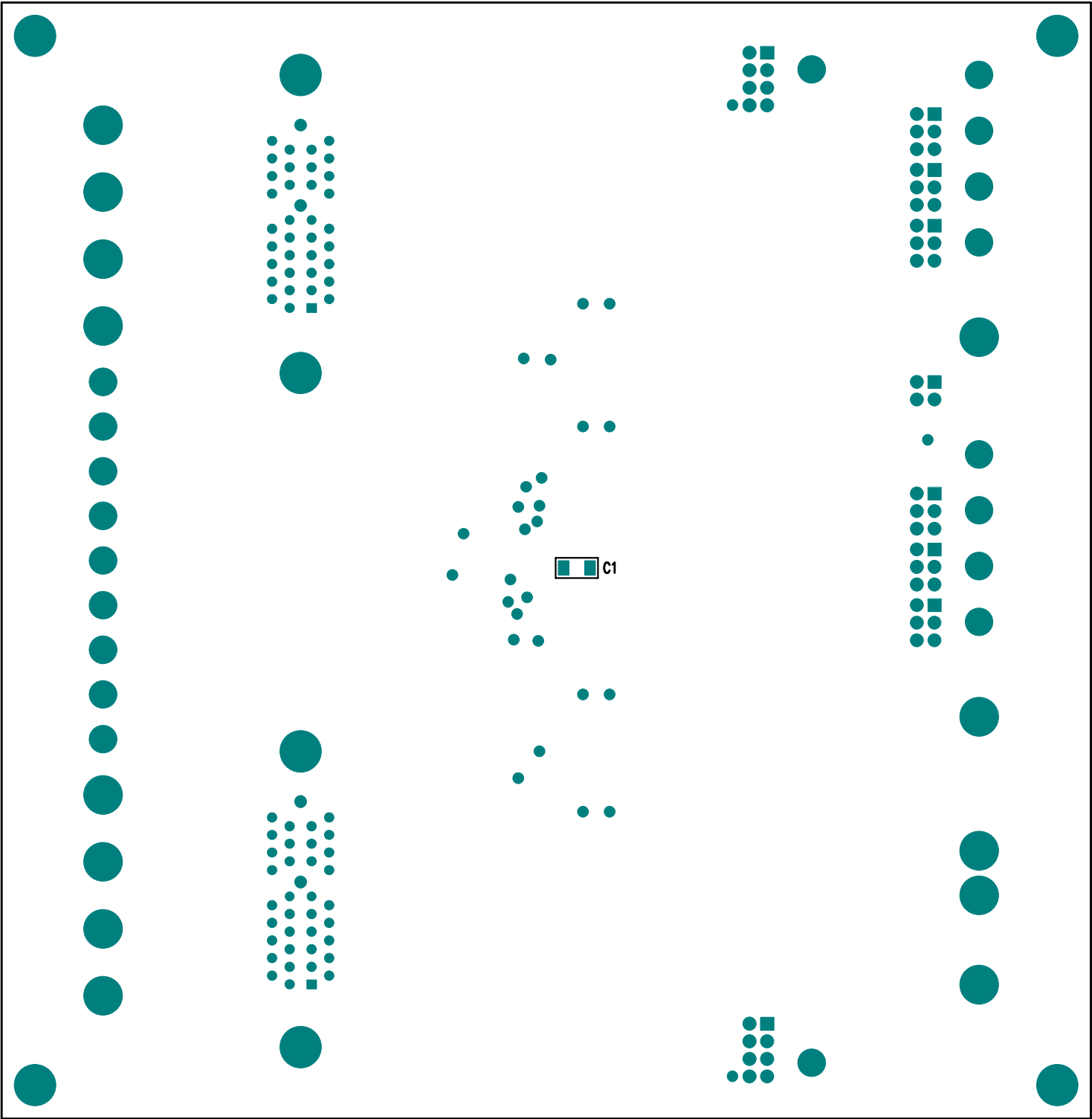
DC1054A Rev 1 Parts List

Item	Qty	Ref - Des	Desc	Manufacturer's Part Number
1	2	CD1,CD2	CAP, 0603 0.033uF 10% 10V X7R	AAC 0603ZC333KAT
2	2	CG3,CG1	CAP, 0603 15nF 10% 50V X7R	AVX 06035C153KAT2A
3	2	CG4,CG2	CAP, 0603 47nF 10% 25V X7R	AVX 06033C473KAT
4	1	C1	CAP, 1206 4.7UF 10% 10V X7R	TAIYOU YUDEN LMK316BJ475KL-T
5	13	D1-D6,D9,D12-D17	LED, GREEN	PANASONIC LN1351C-(TR)
6	4	D7,D8,D10,D11	LED, RED	PANASONIC LN1251C-(TR)
7	19	E1-E4,E7-E10,E17-E25,E34,E35	TURRET, 0.064 DIA	MILL MAX 2308-2-00-80-00-00-07-0
8	13	E5,E11,E13-E15,E26-E33	TURRET, 0.094 DIA	MILL MAX 2501-2-00-80-00-00-07-0
9	6	JP1,JP2,JP3,JP4,JP5,JP6	Header, 3X2 2mm	COMM CON 2202S-06G2
10	2	JP7,JP8	Header, 4X2 2mm	COMM CON 2202S-08G2
11	1	JP9	Header, 2X2 2mm	COMM CON 2202S-04G2
12	2	J2,J1	CONN, PCI 36 PINS	SAMTEC PCIE-36-02-FM-TH
13	4	Q1,Q2,Q3,Q4	XSTR, MOSFET N-CHANNEL	VISHAY SILICONIX Si7336ADP
14	2	RD2,RD1	RES, 0603 47K OHM 5% 1/16W	AAC CR16-473JM
15	2	RG1,RG3	RES, 0603 47 OHMS 5% 1/16W	AAC CR16-470JM
16	2	RG2,RG4	RES, 0603 18 OHM 5% 1/16W	AAC CR16-180JM
17	2	R3,R1	RES, 1206 0.008 OHM 5% 1/4W	IRC LR1206-01-R008-J
18	2	R4,R2	RES, 1206 0.012 OHM 1% 1/4W	IRC LR1206-01-R012-F
19	4	R5,R6,R7,R8	RES, 0603 10 OHM 5% 1/16W	AAC CR16-100JM
20	14	R9-R11,R14,R16,R17,R20-R22, R26,R27,R33,R34,R36	RES, 0805 390 OHMS 5% 1/8W	AAC CR10-391JM
21	6	R12,R13,R15,R18,R19,R23	RES, 0603 10K OHM 5% 1/16W	AAC CR16-103JM
22	3	R31,R32,R37	RES, 0805 3.3K OHMS 5% 1/8W	VISHAY CRCW0805332JNED
23	1	R35	RES, 0603 33 OHM 5% 1/16W	AAC CR16-330JM
24	1	U1	IC, LTC4242CUHF DUAL HOT SWAP CONTROLLER	LINEAR TECH. LTC4242CUHF
25	9	JP1-JP9	SHUNT	SAMTEC 2SN-BK-G
26	8		STANDOFF, SNAP ON	KEYSTONE_8831
27	2	Z1,Z2	DIODE, TRANSZORB 7V	DIODES INC. SMAJ7.0A
28	1	Z3	DIODE, TRANSZORB 15V	DIODES INC. SMAJ15A



LINEAR TECHNOLOGY CORPORATION
 DC1054A REV 1
 07/21/06

INSTALL JUMPERS: JP1, JP6 AT PINS 3&4.
 JP2-JP5 AT PINS 1&6.
 JP7, JP8 AT PINS 4&5.
 JP9 AT PINS 1&4.



DWG NO. DCXXXA

SH 1

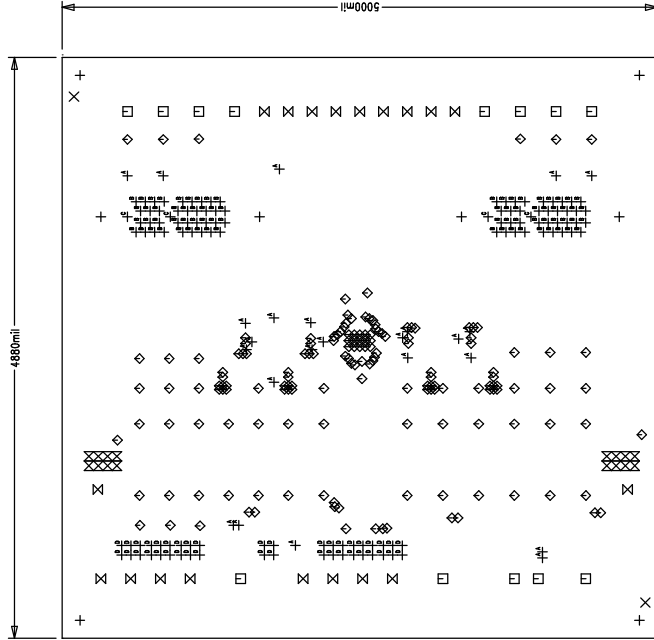
REV 1

2

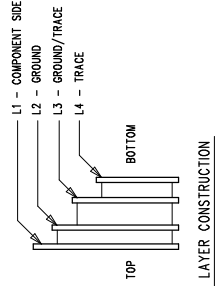
1

REVISION HISTORY

ECO	REV	DESCRIPTION	DATE	APPROVED
	1	PROTO	01/29/06	



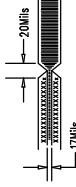
COMPONENT SIDE SHOWN



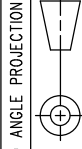
SIZE	QTY	SYM	PLTD	TOL
10	162	◇	YES	+/-0.003
20	24	+	YES	+/-0.003
27.56	72	+	YES	+/-0.003
35	16	×	YES	+/-0.003
40	40	+	YES	+/-0.003
64	19	×	YES	+/-0.005
70	2	×	NO	+/-0.005
92.52	4	+	NO	+/-0.01
95	13	□	YES	+/-0.01
187	8	+	NO	+/-0.01

MULTIFUNCTION CURRENT CONTROL

- NOTES: UNLESS OTHERWISE SPECIFIED:
- ARTWORK P/N DC10544A REV 1.
 - FAB PER IPC-A-600
 - MATERIAL: EPOXY FIBERGLASS, NEMA GRADE FR-4
FINISHED THICKNESS TO BE .062 +/- .005 INCH
WITH 2 OZ. COPPER ON TWO OUTER LAYERS AND
1 OZ. COPPER ON TWO INTERNAL LAYERS.
FLAMABILITY RATING: 94 V-2 MINIMUM.
 - SIZE: CUT TO DIMENSIONS AND TOLERANCES SHOWN.
0.00 ARE PRIMARY DATUMS.
 - BOARD: SELECTIVE PLATED BOARD, SOLDER
MASK OVER BARE COPPER.
WHITE TIN BOTH SIDES.
SOLDER MASK TYPE: WET PHOTO-IMAGEABLE
THE PCB COLOR: GREEN
SILKSCREEN COMPONENT SIDE WITH WHITE
NON-CONDUCTIVE INK.
PLATE THRU ALL HOLES WITH COPPER
MIN. PLATING THICKNESS: 1 OZ. EXCEPT
WHERE PLATING NOT REQUIRED
 - DRILL: ALL HOLES SHALL BE DRILLED +/- .003 INCH
WITH RESPECT TO CTR. OF DRILLED PAD.
ALL HOLES FINISHED SIZE AFTER PLATING.
 - DROP ALL UNUSED PADS ON INNER LAYERS.
 - DO NOT ALTER ARTWORK e.g. TO ADD LOGO OR DATE CODE.
 - SCORING:



UNLESS OTHERWISE SPECIFIED
DIMENSIONS ARE IN INCHES
TOLERANCES ON ANGLE ± P
2 PLACE ± .01, 3 PLACE ± .005
INTERPRET DIM AND TOL
PER ASME Y14.5M - 1994



DO NOT SCALE DRAWING

CONTRACT NO
APPROVALS
DRAWN
mei
CHECKED
APPROVED
ENGINEER

DATE
01/29/06

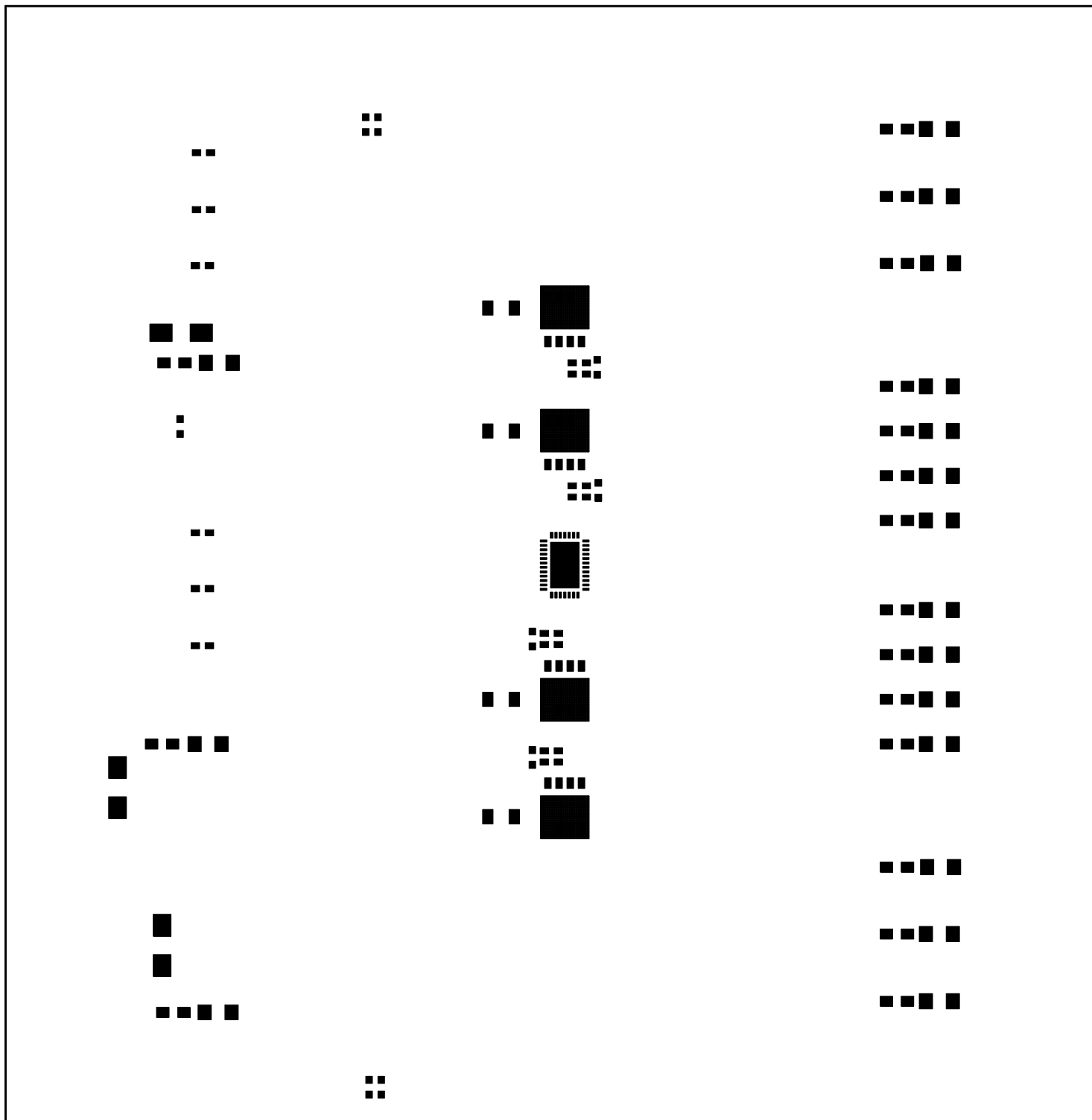


TITLE
FAB, LTC4242CUHF, PCI EXPRESS
HOT SWAP CONTROLLER

SIZE B CAGE CODE DWG NO DC10544A REV 1

SCALE 1/1 FILENAME: 10544-1PCB SHEET 1 OF 1

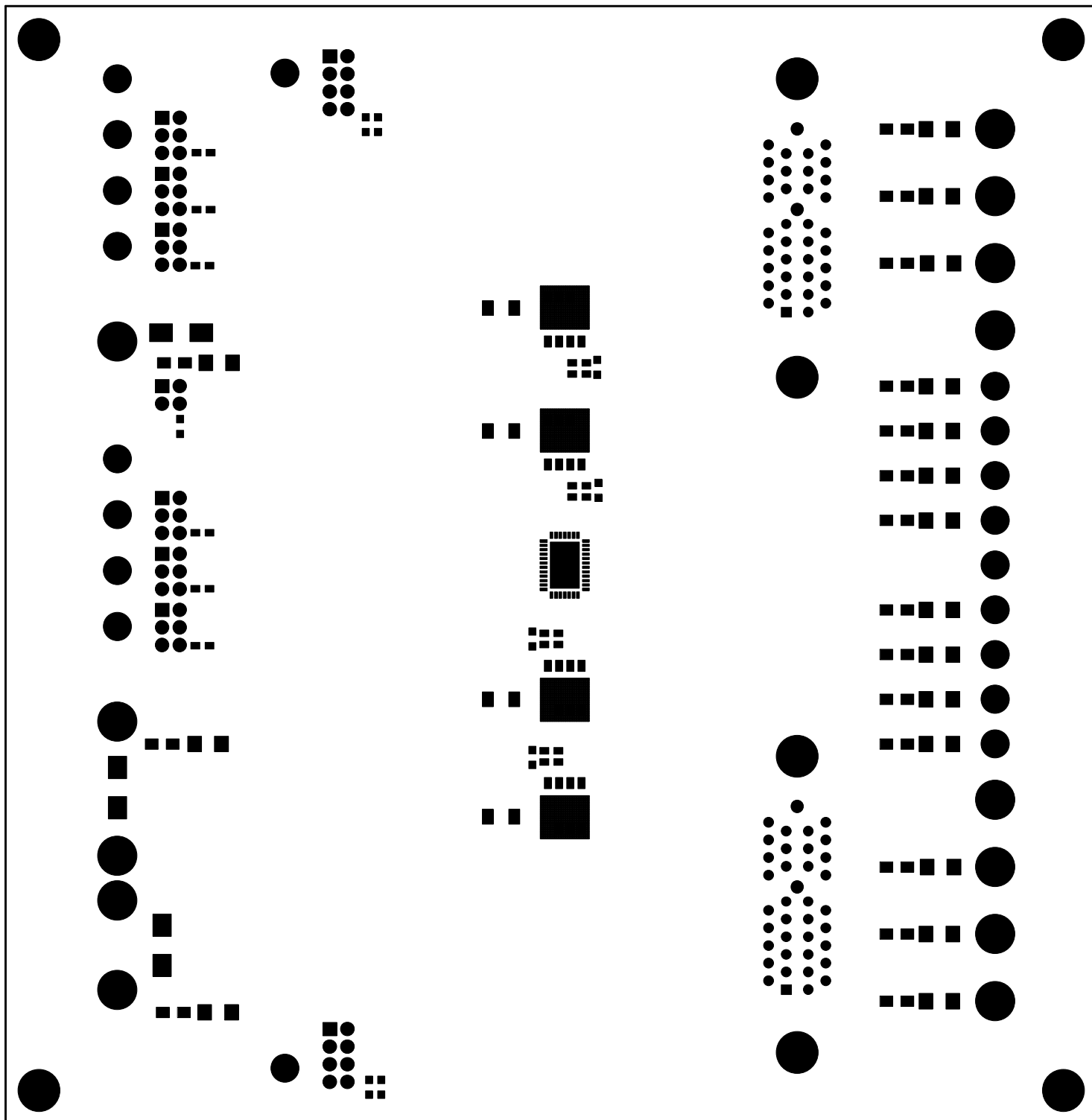
LTC CONFIDENTIAL – FOR CUSTOMER USE ONLY



LINEAR TECHNOLOGY CORPORATION

DC1054A REV 1
07/21/06

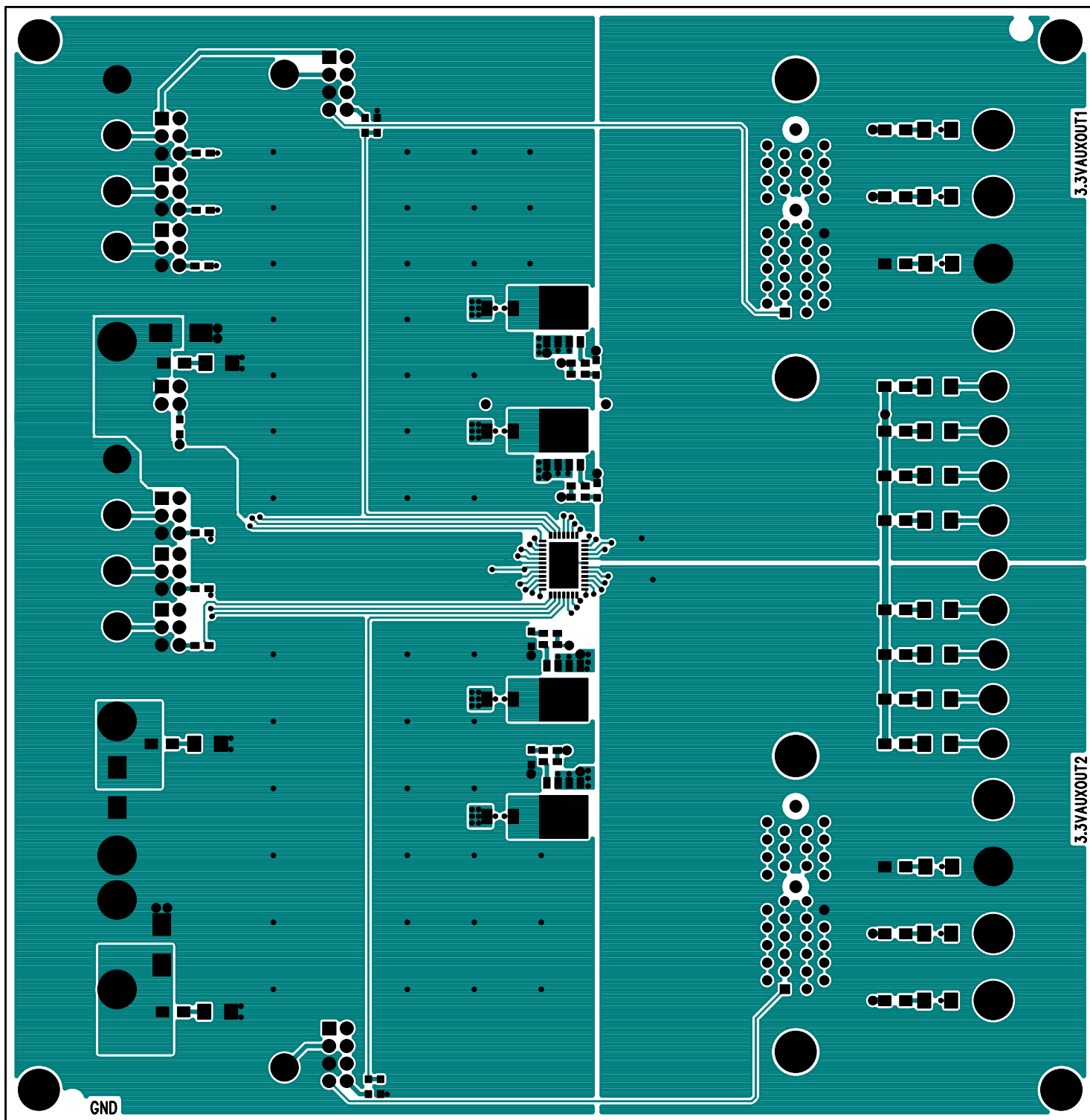
TOP PASTE



LINEAR TECHNOLOGY CORPORATION

TOP SOLDERMASK

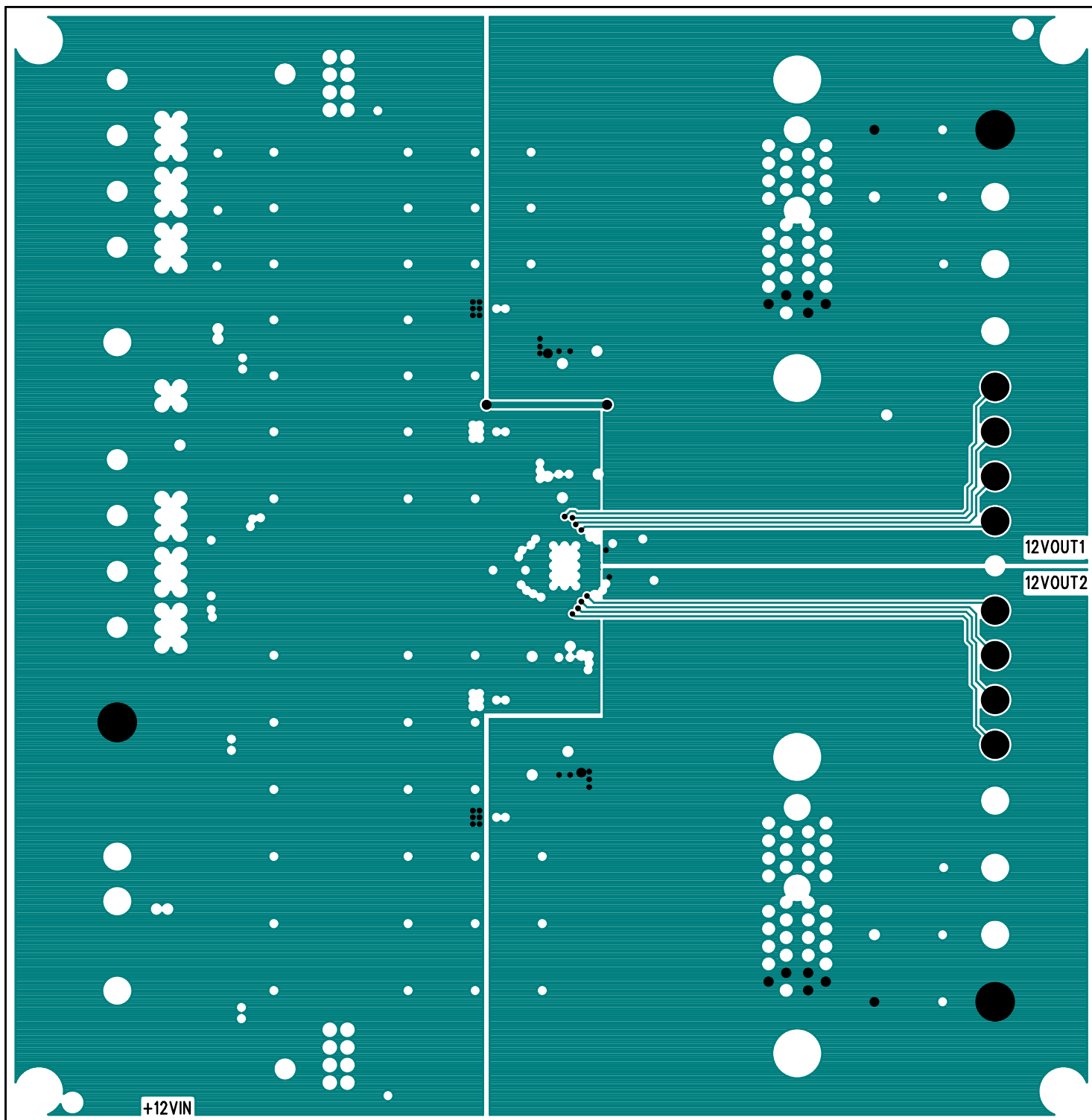
DC1054A REV 1
07/21/06



LINEAR TECHNOLOGY CORPORATION

L1-COMPONENT SIDE

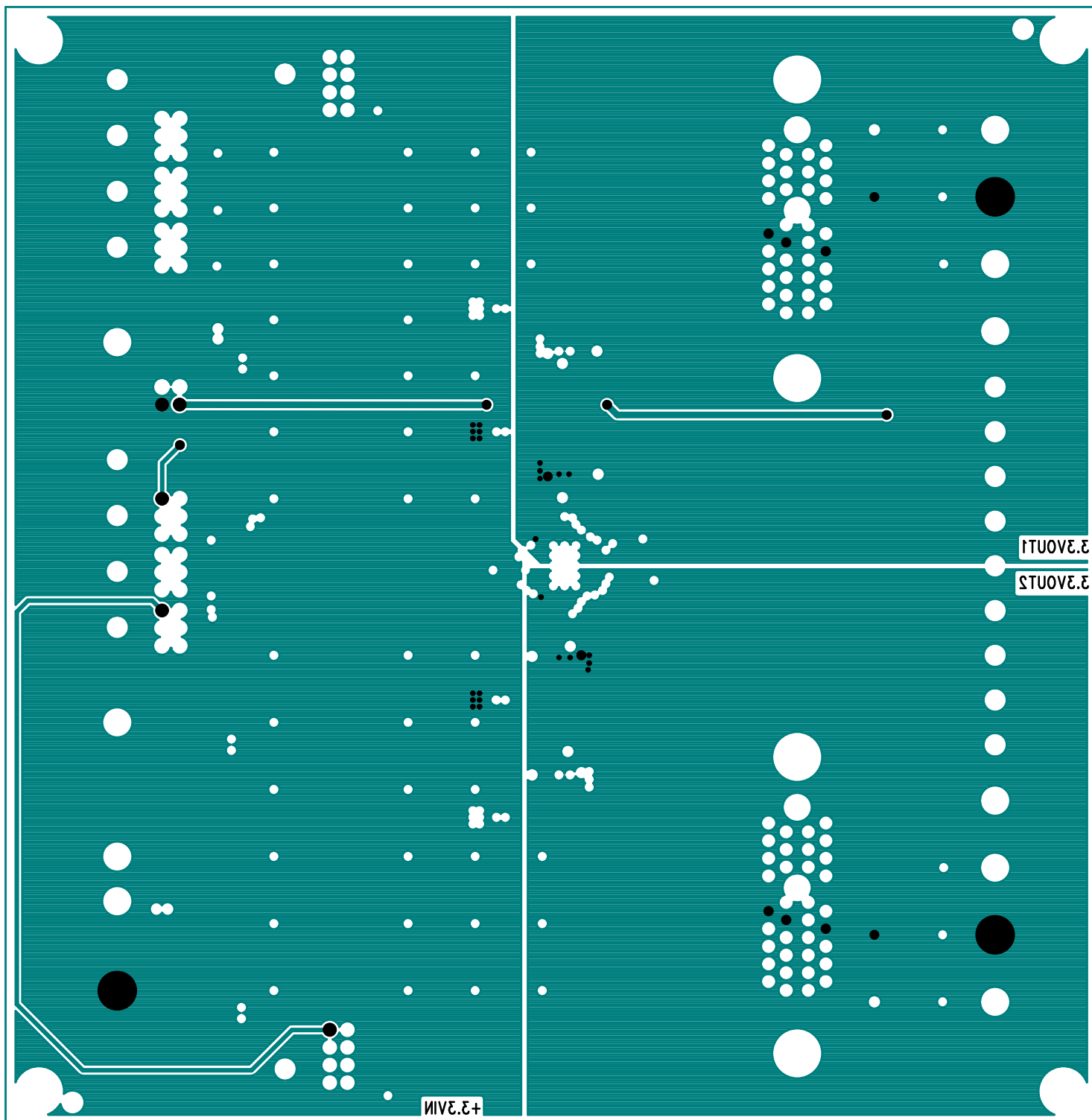
DC1054A REV 1
07/21/06



LINEAR TECHNOLOGY CORPORATION

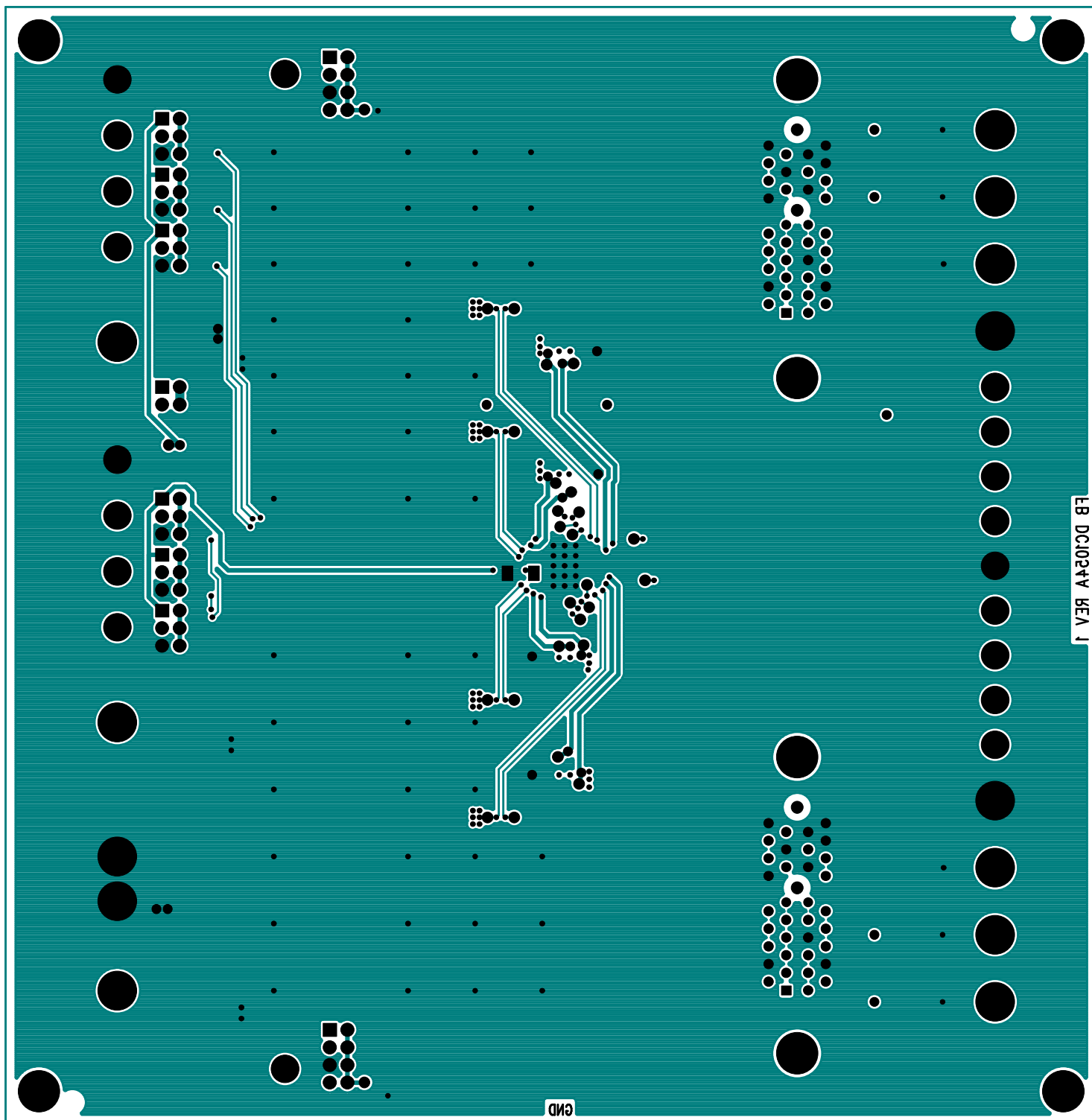
DC1054A REV 1
07/21/06

L2-GND LAYER



LINEAR TECHNOLOGY CORPORATION
 DC1054A REV 1
 07/21/06

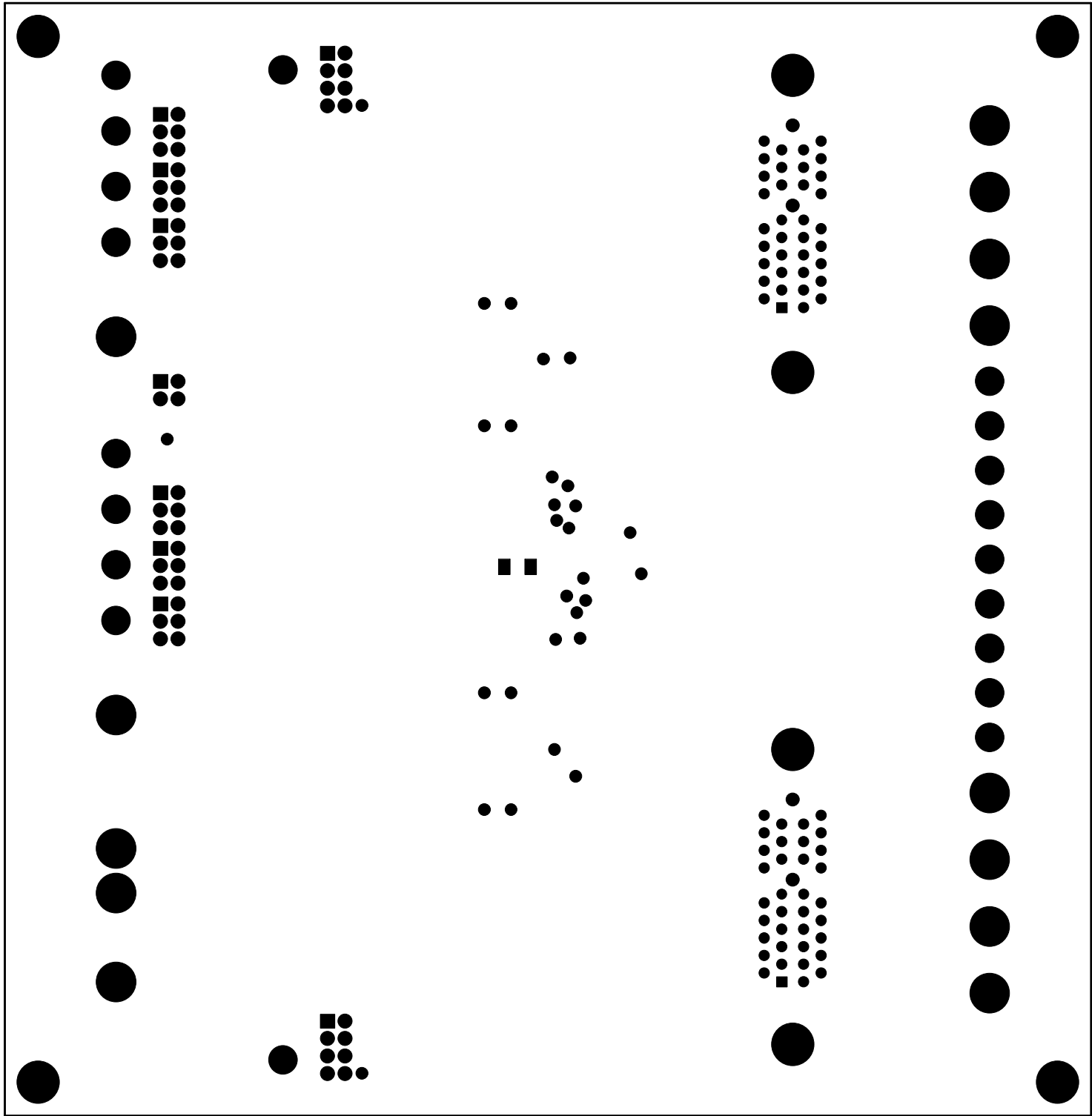
L3-0ND LAYER



LINEAR TECHNOLOGY CORPORATION

DC1054A REV 1
07/21/06

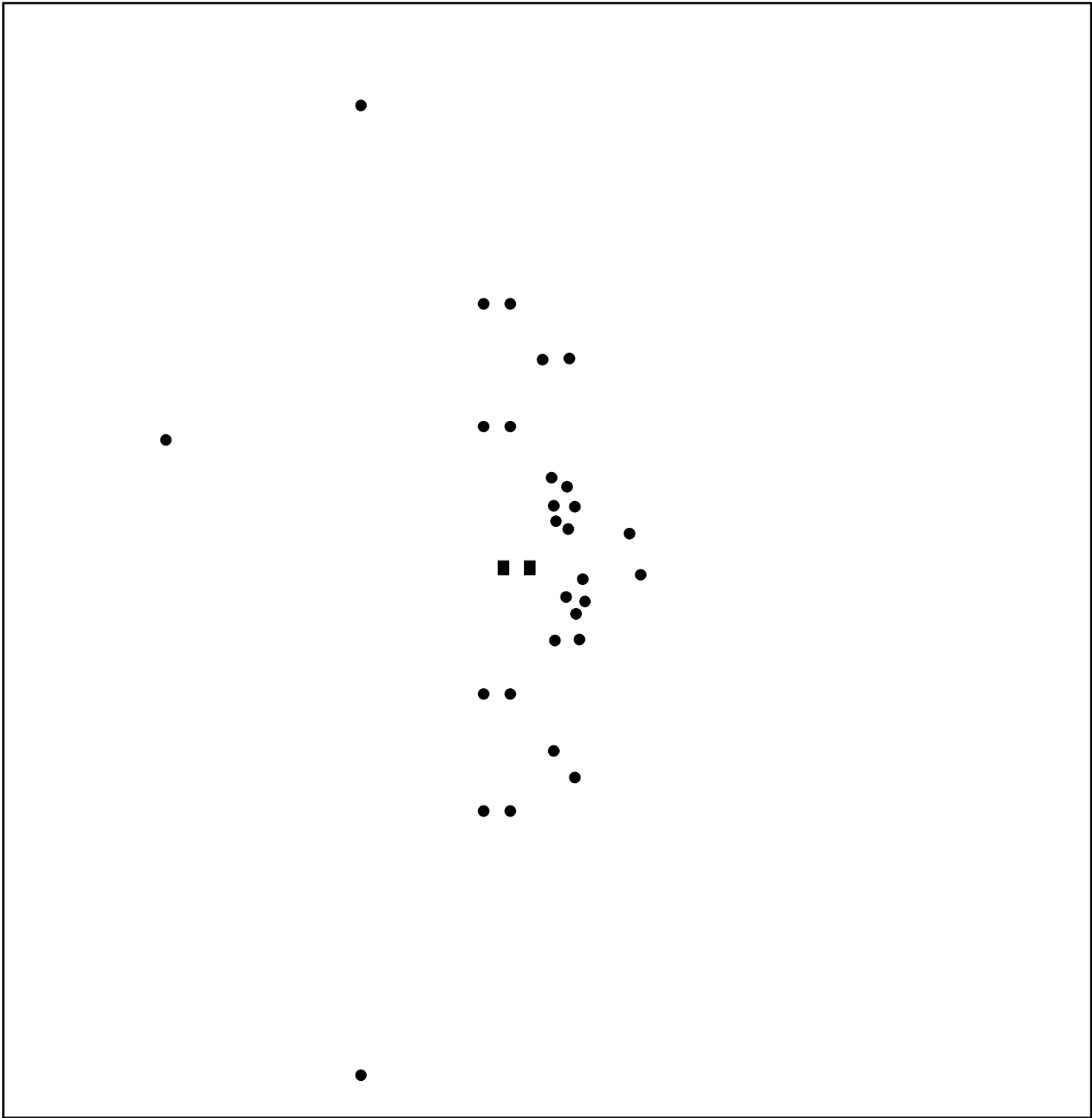
REV 1 BOTTOM LAYER



LINEAR TECHNOLOGY CORPORATION

DC1054A REV 1
07/21/06

BLTM SOLDERMASK



LINEAR TECHNOLOGY CORPORATION

DC1054A REV 1
07/21/06

BTM PASTE

ci

LINEAR TECHNOLOGY CORPORATION

DC1054A REV 1
07/21/06

BLTM 2IKSCREEM