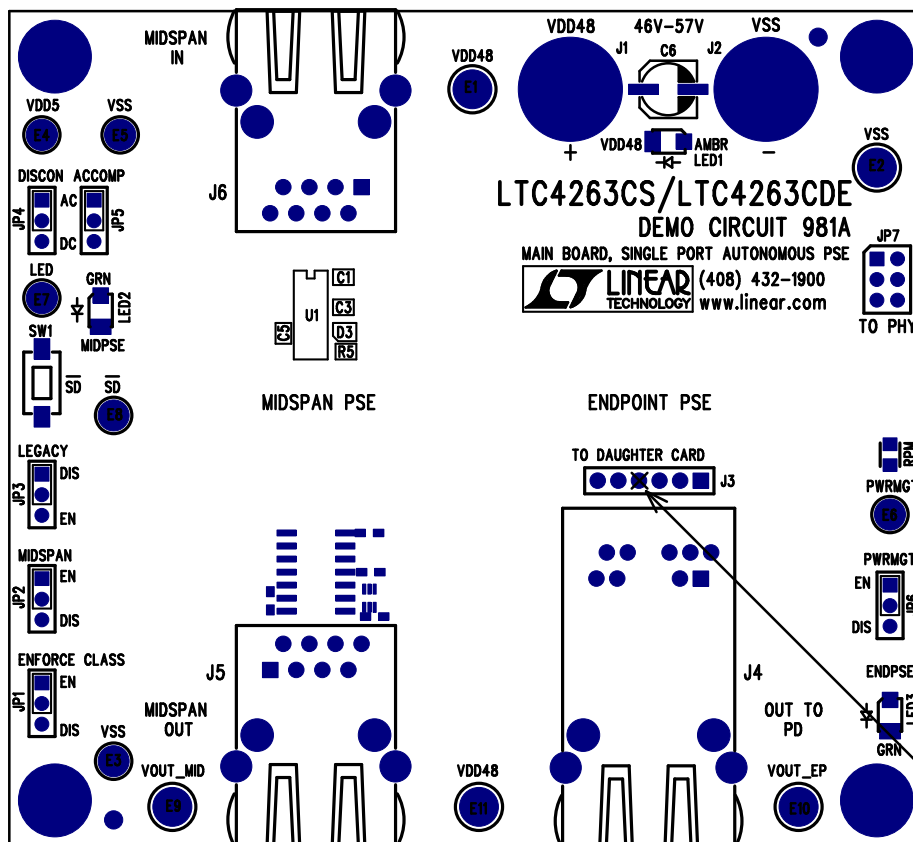
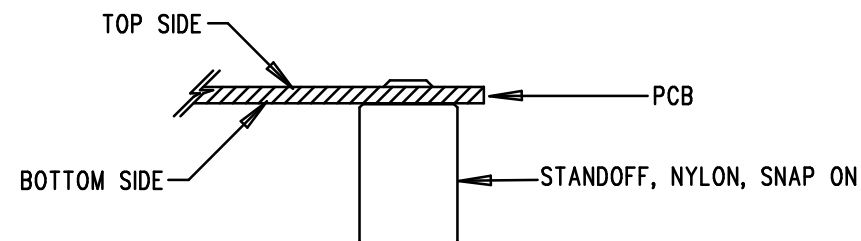


REVISIONS			
REV	DESCRIPTION	APPR	DATE
A-2	FINAL FABRICATION	DR	06-22-06



NOTES: UNLESS OTHERWISE SPECIFIED

1. WORKMANSHIP SHALL BE IN ACCORDANCE WITH IPC-A-610.
2. INSTALL SHUNT ON JP1-JP6 PINS 1 AND 2.
3. PARTS TO OMIT WILL BE SPECIFIED ON THE BILL OF MATERIALS. LOCATIONS OF OMITTED PARTS SHALL BE FREE OF SOLDER. MASK THE SOLDER STENCIL WHERE SMT PARTS ARE OMITTED.
4. DEPANELIZE BOARDS AFTER ASSEMBLY AND ROUTE-OUT THE BREAKOUT TABS ON FOUR SIDES OF THE BOARD EDGE.
5. ASSY PROCESSES SHALL INCLUDE: REFLOW SOLDER TOP SIDE SMD.
6. INSTALL 4 STANDOFFS AT 4 CORNERS AS SHOWN BELOW:



J3 PIN 4 IS BLOCKED ON THE CONNECTOR.

APPROVALS

	INIT	DATE
DRAWN		
CHECK		
DESIGN	KIM T.	06-22-06
ENGR	DILIAN R.	06-22-06
SCALE = NONE		



1630 MCCARTHY BLVD
MILPITAS, CA 95035
PH: (408)432-1900
LTC CONFIDENTIAL-
FOR CUSTOMER USE ONLY

TITLE: TOP ASSEMBLY DRAWING

MAIN BOARD, SINGLE PORT AUTONOMOUS PSE

SIZE A DEMO DC981A-2 REV. A-2
LTC4263CS/LTC4263CDE

SHT 1 of 2