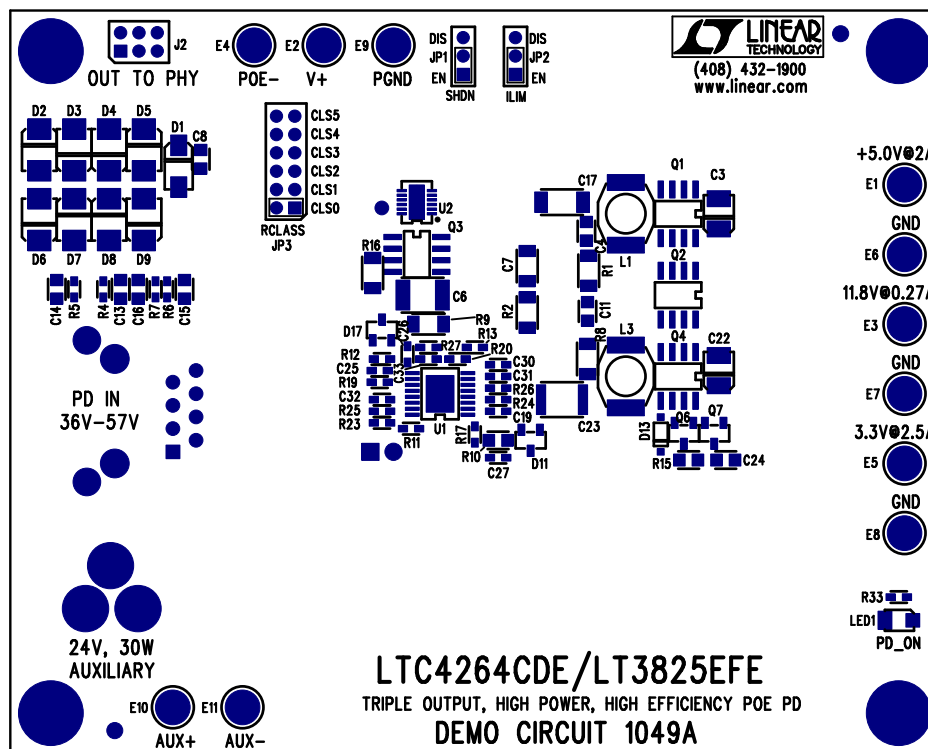
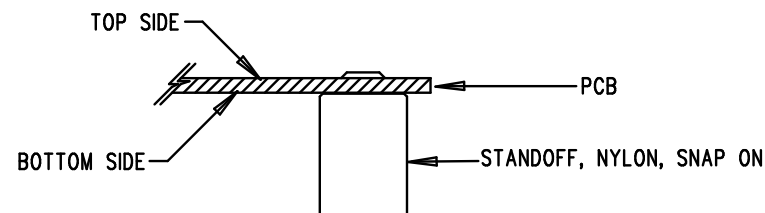


REVISIONS			
REV	DESCRIPTION	APPR	DATE
A-2	FINAL FABRICATION	DR	03-23-07



## NOTES: UNLESS OTHERWISE SPECIFIED

1. WORKMANSHIP SHALL BE IN ACCORDANCE WITH IPC-A-610.
2. INSTALL SHUNT ON JP1-JP3 PIN 1 AND 2.
3. DEPANELIZE BOARDS AFTER ASSEMBLY AND ROUTE-OUT THE BREAKOUT TABS ON FOUR SIDES OF THE BOARD EDGE.
4. ASSY PROCESSES SHALL INCLUDE: REFLOW SOLDER TOP SIDE SMD.
5. INSTALL 4 STANDOFFS AT 4 CORNERS AS SHOWN BELOW:



## APPROVALS

	INIT	DATE
DRAWN		
CHECK		
DESIGN	KIM T.	03-23-07
ENGR	DILIAN R.	03-23-07
	RYAN H.	

SCALE = NONE



TITLE: TOP ASSEMBLY DRAWING

TRIPLE OUTPUT, HIGH POWER, HIGH EFFICIENCY POE PD

SIZE	DEMO	REV.
A	DC1049A-2 LTC4264CDE/LT3825EFE	A-2

SHT 1 of 2