

DWG NO

DC859A

SH

1

REV

3

ECO

REV

3

DATE

09/16/05

APPROVED

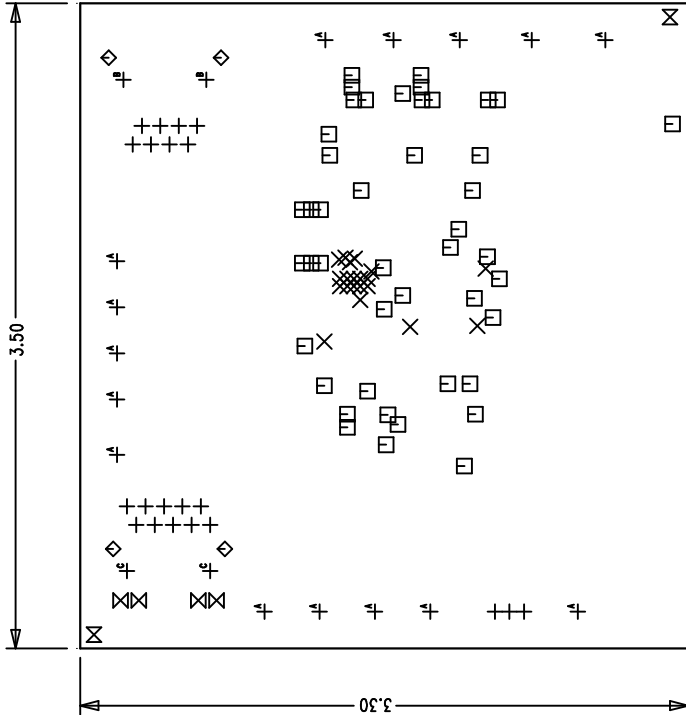
PROD

REVISION HISTORY

NOTES: UNLESS OTHERWISE SPECIFIED,

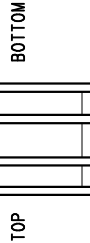
1. ARTWORK P/N DC859A REV 3.
2. FAB PER IPC-A-600
3. MATERIAL: EPOXY FIBERGLASS, NEMA GRADE FR-4
.062 +/- .005 INCH THICKNESS WITH 2 OZ.
COPPER FINISH ON TWO OUTER LAYERS AND
1 OZ. COPPER ON TWO INTERNAL LAYERS.
FLAMABILITY RATING: 94 V-2 MINIMUM .
4. SIZE: CUT TO DIMENSIONS AND TOLERANCES SHOWN.
0.00 ARE PRIMARY DATUMS.
5. BOARD: SELECTIVE PLATED BOARD. SOLDER
MASK OVER BARE COPPER. COLOR, GREEN LPI.
WHITE TIN IMMERSION (OMIKRON) BOTH SIDES.
SILKSCREEN COMPONENT SIDE WITH WHITE
NON-CONDUCTIVE INK.
PLATE THRU ALL HOLES WITH COPPER
MIN. PLATING THICKNESS: 1 OZ. EXCEPT
WHERE PLATING NOT REQUIRED
6. DRILL: ALL HOLES SHALL BE DRILLED +/- .003 INCH
WITH RESPECT TO CTR. OF DRILLED PAD.
ALL HOLES FINISHED SIZE AFTER PLATING.
7. DROP ALL UNUSED PADS ON INNER LAYERS.
8. DO NOT ALTER ARTWORK e.g. TO ADD LOGO OR DATE CODE.

SIZE	QTY	SYM	PLTD	TOL
10	20	✕	YES	+/-0.003
20	45	⊠	YES	+/-0.003
35	21	+	YES	+/-0.003
40	4	⊗	YES	+/-0.003
63	4	◇	YES	+/-0.005
70	2	⊠	NO	+/-0.005
95	15	⊠	YES	+/-0.005
126	2	⊠	NO	+0.01/-0.001
128	2	⊠	NO	+/-0.01



COMPONENT SIDE SHOWN

- L1 - TOP COMPONENT SIDE
- L2 - GND/TRACE
- L3 - GND/TRACE
- L4 - BOTTOM COMPONENTSIDE



LAYER CONSTRUCTION

UNLESS OTHERWISE SPECIFIED
DIMENSIONS ARE IN INCHES
TOLERANCES ON ANGLE ±1°
2 PLACE ±.01 3 PLACE ±.005
INTERPRET DIM AND TOL
PER ASME Y14.5M - 1994

CONTRACT NO.

APPROVALS

DRAWN

CHECKED

APPROVED

DESIGNED BY

DATE

03/01/05

LINEAR TECHNOLOGY

1630 McCarthy Blvd.
Milpitas, CA 95035

Phone: (408)432-1900
Fax: (408)434-0507

TITLE

FAB, LTC4267IDHC, MULTIPLE OUTPUT PD

SIZE

CAGE CODE

A

DWG NO.

DC859A

REV

3

SCALE

1/1

FILENAME:

859A-3.PCB

SHEET

1

OF

1