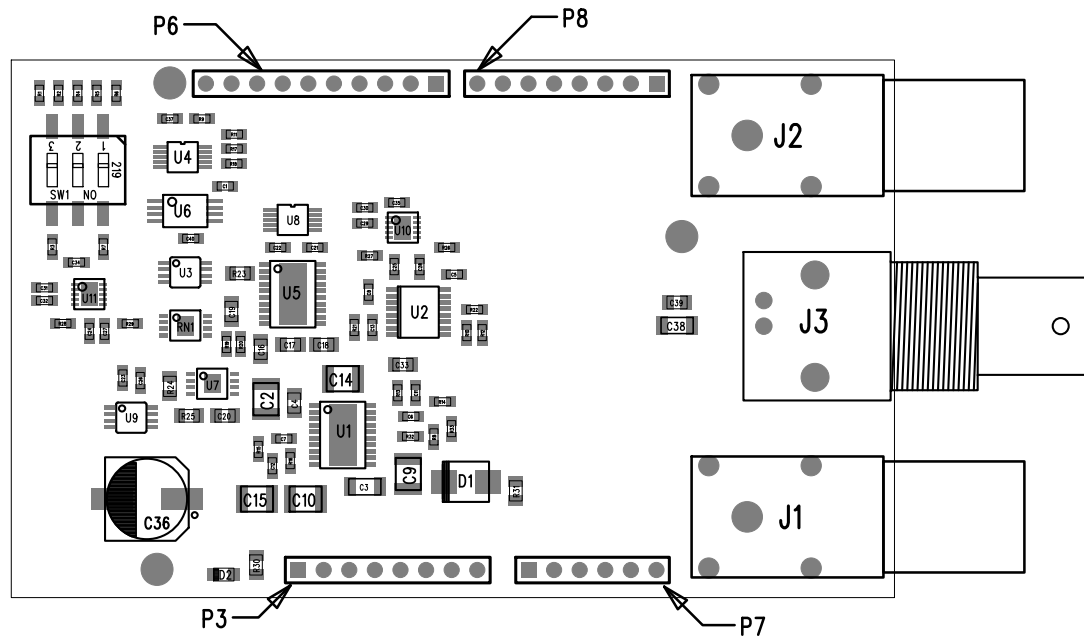



REVISION HISTORY		
ECO	REV	DESCRIPTION



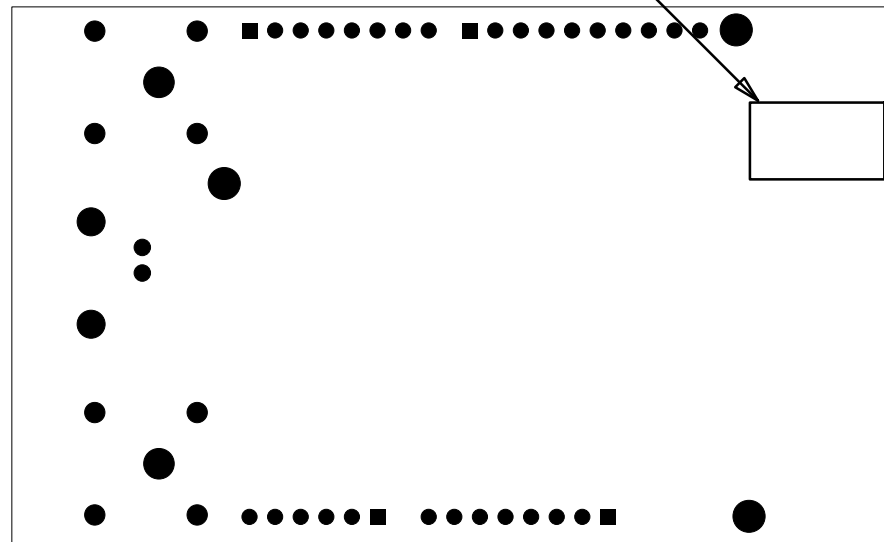
NOTES: UNLESS OTHERWISE SPECIFIED

1. WORKMANSHIP SHALL BE IN ACCORDANCE WITH IPC-A-610.
2. ASSEMBLY PROCESS SHALL INCLUDE REFLOW SOLDER BOTH SIDES. MAXIMUM SOLDER TEMPERATURE SHALL BE <250 DEGREES CELSIUS.
3. DEPANELIZE BOARDS AFTER ASSEMBLY AND ROUTE-OUT THE BREAKOUT TABS ON ALL BOARD EDGES.
4. P3,P6,P7,P8 ARE INSTALLED WITH THE RECEPTACLES ON THE TOP SIDE.
5. J1,J2 AND J3 ARE INSTALLED ON THE TOP SIDE.
6. SEE PAGE2 FOR LOCATION AREA OF S/N LABEL.

APPROVALS		 <div> 1630 MCCARTHY BLVD MILPITAS, CA 95035 PH: (408)432-1900 www.linear.com LTC CONFIDENTIAL- FOR CUSTOMER USE ONLY </div>	
PCB DES.	M.HAWKINS		
APP ENG.	DAN EDDLEMAN	TITLE: ASSEMBLY DRAWING, TOP	
		<h1>EasySMU</h1>	
		SIZE N/A	IC NO. LTC4316 DEMO CIRCUIT 2591A
			ASS'Y DWG. REV. 03
SCALE = NONE		SHT 1 OF 2	


DEMO S/N LABEL
APPLY IN THIS AREA

①



NOTES: UNLESS OTHERWISE SPECIFIED

1. APPLY LABEL IN AREA AS SHOWN.

APPROVALS		 <div> 1630 MCCARTHY BLVD MILPITAS, CA 95035 PH: (408)432-1900 www.linear.com LTC CONFIDENTIAL- FOR CUSTOMER USE ONLY </div>	
PCB DES.	M.HAWKINS		
APP ENG.	DAN EDDLEMAN	TITLE: ASSEMBLY DRAWING, BOTTOM	
		<h1>EasySMU</h1>	
		SIZE N/A	IC NO. LTC4316 DEMO CIRCUIT 2591A
		ASS'Y DWG. REV. 03	
SCALE = NONE		SHT 2 OF 2	