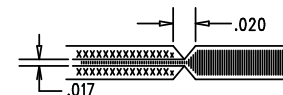


REVISIONS			
REV	DESCRIPTION	APPR	DATE
A-1	2ND PROTOTYPE	ML	02-01-07

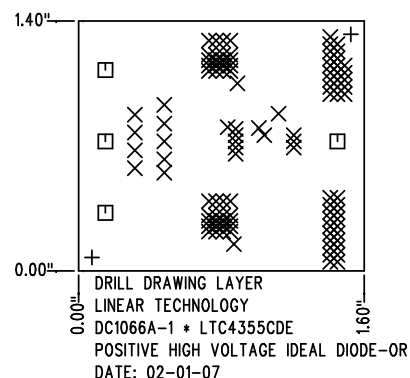
SIZE	QTY	SYM	PLATED	TOL
0.07	2	+	NO	+/-0.003"
0.012	105	X	YES	+/-0.003"
0.094	4	□	YES	+/-0.003"

NOTES: UNLESS OTHERWISE SPECIFIED


- FAB PER IPC-A-600
- MATERIAL: EPOXY FIBERGLASS, NEMA GRADE FR-4
FINISHED THICKNESS TO BE 0.062" +/- .005"
TOTAL OF 4 LAYERS WITH 2 OZ. CU ON THE
OUTER LAYERS AND 1 OZ. CU ON THE INNER LAYERS.
FLAMABILITY RATING: 94 V-0 MINIMUM .
- SIZE: CUT TO DIMENSIONS AND TOLERANCES SHOWN.
0.00" ARE PRIMARY DATUMS.
- DRILLING: DRILL HOLES PER SCHEDULE. PLATE THROUGH
HOLES WITH COPPER, 0.001" THICK MIN.
ALL HOLE SIZES ARE SPECIFIED AFTER PLATING.
HOLE LOCATION TOLERANCES ARE +/-0.003"
IN RELATION TO CENTER
- FINISH: WHITE TIN IMMERSION (OMIKRON).
SMOBC USING LPI BOTH SIDES, COLOR GREEN.
SILKSCREEN: USING WHITE NON-CONDUCTIVE EPOXY INK.
- DO NOT ALTER ARTWORK e.g. TO ADD LOGO OR DATE CODE.
- SCORING FOR PANELIZED PCB:



- PLEASE LOOK AT THE README FILE FOR THE OTHER REQUIREMENTS.



SHOWN FROM COMPONENT SIDE

APPROVALS			 LINEAR TECHNOLOGY 1630 MCCATHY BLVD MILPITAS, CA 95035 PH: (408)432-1900 LTC CONFIDENTIAL- FOR CUSTOMER USE ONLY	
	INIT	DATE		
DRAWN			TITLE: FABRICATION DRAWING POSITIVE HIGH VOLTAGE IDEAL DIODE-OR SIZE A DEMO DC1066A-1 * LTC4355CDE REV. A-1	
CHECK				
DESIGN	KIM T.	02-01-07		
ENGR	MITCHELL L.	02-01-07		
SCALE = NONE			SHT 1 of 1	