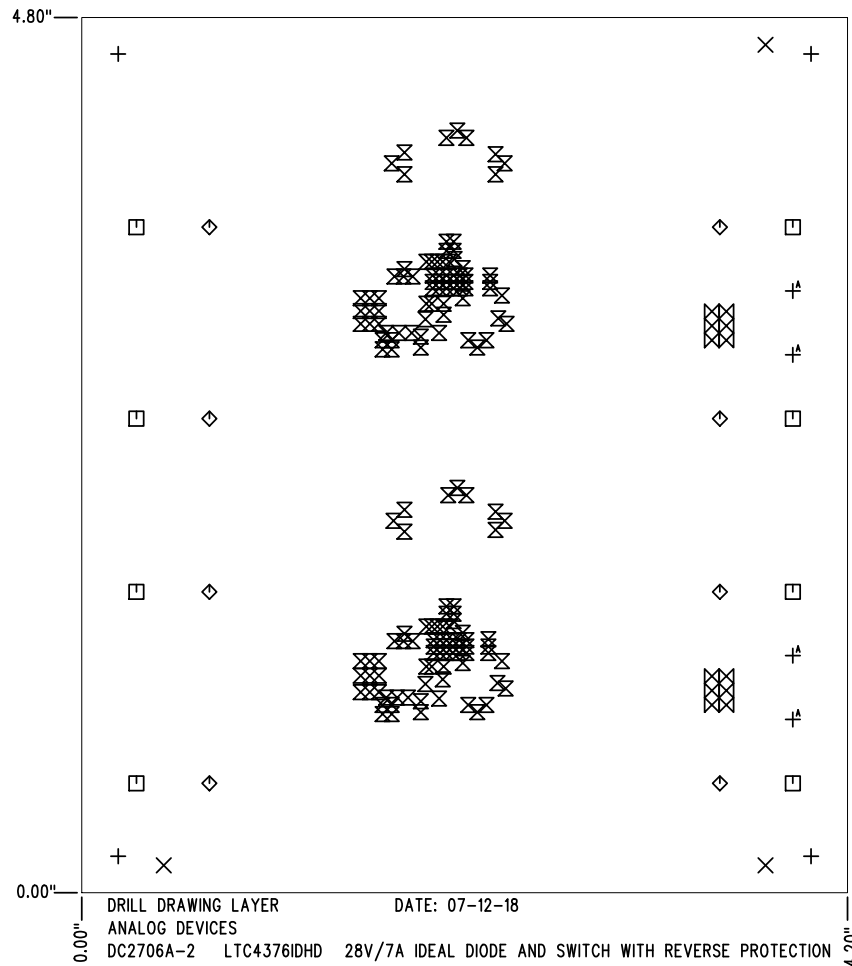


SHOWN FROM TOP SIDE



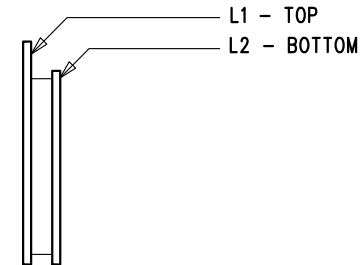
DRILL DRAWING LAYER DATE: 07-12-18  
 ANALOG DEVICES  
 DC2706A-2 LTC4376IDHD 28V/7A IDEAL DIODE AND SWITCH WITH REVERSE PROTECTION

SIZE	QTY	SYM	PLATED	TOL
0.187	4	+	NO	+/-0.003"
0.07	3	X	NO	+/-0.003"
0.094	8	□	YES	+/-0.003"
0.207	8	◇	YES	+/-0.003"
0.012	152	⊗	YES	+/-0.003"
0.035	12	⊗	YES	+/-0.003"
0.063	4	⊕	YES	+/-0.003"

# REVISION HISTORY

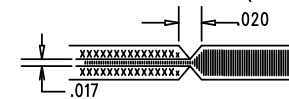
ECO	REV	DESCRIPTION	APP. ENG.	DATE
-	2	PRODUCTION	MANPREET S.	07-12-18



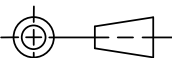
## LAYER STRUCTURE



## NOTES: UNLESS OTHERWISE SPECIFIED

- FAB PER IPC-A-600.
- MATERIAL: -LEAD FREE ASSEMBLY COMPLIANT, ISOLA FR-370HR  
 -FINISHED THICKNESS TO BE 0.062" +/- .005"  
 -TOTAL OF 2 LAYERS WITH 2 OZ. CU ON EACH.  
 -FLAMMABILITY RATING: 94 V-0 MINIMUM.
- SIZE: CUT TO DIMENSIONS AND TOLERANCES SHOWN.  
 0.00" ARE PRIMARY DATUMS.
- DRILLING: -DRILL HOLES PER SCHEDULE. PLATE THROUGH HOLES WITH COPPER, 0.001" THICK MIN.  
 -ALL HOLE SIZES ARE SPECIFIED AFTER PLATING.  
 -HOLE LOCATION TOLERANCES ARE +/-0.003" IN RELATION TO CENTER
- FINISH: -SMOBC USING LPI BOTH SIDES, COLOR GREEN.  
 -GOLD IMMERSION BOTH SIDES.  
 -FOR SILKSCREENS: USE WHITE NON-CONDUCTIVE INK.
- DO NOT ALTER ARTWORK e.g. TO ADD LOGO OR DATE CODE.  
 PAD SIZE CAN BE MODIFIED TO MEET END FINISH.
- PCBS ARE TO BE RoHS COMPLIANT.
- SCORING FOR PANELIZED PCB (PRODUCTION FAB ONLY):



UNLESS OTHERWISE SPECIFIED		APPROVALS		 <b>ANALOG DEVICES</b>		 <b>POWER BY LINEAR™</b>		1630 MCCARTHY BLVD. MILPITAS, CA 95035 TEL: (408)432-1900	
DIMENSIONS ARE IN INCHES		PCB DES.		KIM T.		www.analog.com		www.linear.com	
TOLERANCES:		APP ENG.		MANPREET S.		TITLE: FABRICATION DRAWING  28V/7A IDEAL DIODE AND SWITCH WITH REVERSE PROTECTION			
0.XX" = ±0.01"									
0.XXX" = ±0.005"									
INTERPRET DIM AND TOL PER ASME Y14.5M-1994									
THIRD ANGLE PROJECTION						SIZE		IC NO.	
						N/A		LTC4376IDHD	
								DEM0 CIRCUIT 2706A	
								REV	
								2	
		SCALE = NONE		FILENAME:		DC2706A-2.PCB		SHT 1 OF 1	