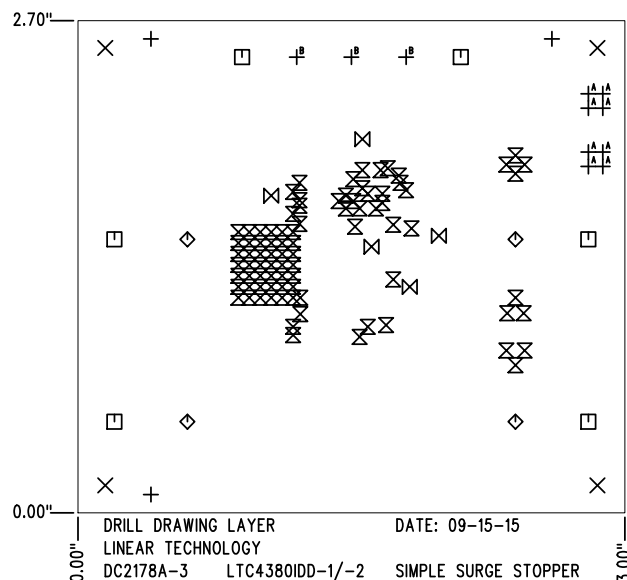


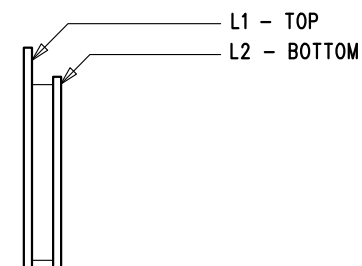
REVISION HISTORY				
ECO	REV	DESCRIPTION	APP. ENG.	DATE
-	3	PRODUCTION	MITCHELL L.	04-20-16

SHOWN FROM TOP SIDE



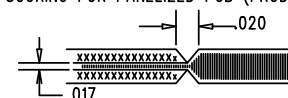
SIZE	QTY	SYM	PLATED	TOL
0.07	3	+	NO	+/-0.003"
0.187	4	X	NO	+/-0.003"
0.094	6	□	YES	+/-0.003"
0.215	4	◇	YES	+/-0.003"
0.012	86	⊗	YES	+/-0.003"
0.025	5	⊗ ^A	YES	+/-0.003"
0.035	8	⊕ ^A	YES	+/-0.003"
0.064	3	⊕ ^B	YES	+/-0.003"


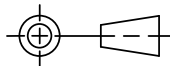
LAYER STRUCTURE



NOTES: UNLESS OTHERWISE SPECIFIED

- FAB PER IPC-A-600.
- MATERIAL: -LEAD FREE ASSEMBLY COMPLIANT, ISOLA FR-370HR
-FINISHED THICKNESS TO BE 0.062" +/- .005"
-TOTAL OF 2 LAYERS WITH 2 OZ. CU ON EACH.
-FLAMMABILITY RATING: 94 V-0 MINIMUM.
- SIZE: CUT TO DIMENSIONS AND TOLERANCES SHOWN.
0.00" ARE PRIMARY DATUMS.
- DRILLING: -DRILL HOLES PER SCHEDULE. PLATE THROUGH HOLES WITH COPPER, 0.001" THICK MIN.
-ALL HOLE SIZES ARE SPECIFIED AFTER PLATING.
-HOLE LOCATION TOLERANCES ARE +/-0.003" IN RELATION TO CENTER
- FINISH: -SMOBC USING LPI BOTH SIDES, COLOR GREEN.
-GOLD IMMERSION BOTH SIDES.
-FOR SILKSCREENS: USE WHITE NON-CONDUCTIVE INK.
- DO NOT ALTER ARTWORK e.g. TO ADD LOGO OR DATE CODE.
PAD SIZE CAN BE MODIFIED TO MEET END FINISH.
- PCBS ARE TO BE RoHS COMPLIANT.
- SCORING FOR PANELIZED PCB (PRODUCTION FAB ONLY):



UNLESS OTHERWISE SPECIFIED		APPROVALS		 LINEAR TECHNOLOGY 1630 MCCARTHY BLVD MILPITAS, CA 95035 PH: (408)432-1900 www.linear.com LTC CONFIDENTIAL- FOR CUSTOMER USE ONLY	
DIMENSIONS ARE IN INCHES TOLERANCES: 0.XX" = ±0.01" 0.XXX" = ±0.005" INTERPRET DIM AND TOL PER ASME Y14.5M-1994 THIRD ANGLE PROJECTION 		PCB DES.	KIM T.		
		APP ENG.	MITCHELL L.	TITLE: FABRICATION DRAWING	
				SIMPLE SURGE STOPPER	
				SIZE	IC NO.
				N/A	LTC4380IDD-1/-2
					DEMO CIRCUIT 2178A
		SCALE = NONE		FILENAME: DC2178A-3.PCB	REV 3
					SHT 1 OF 1