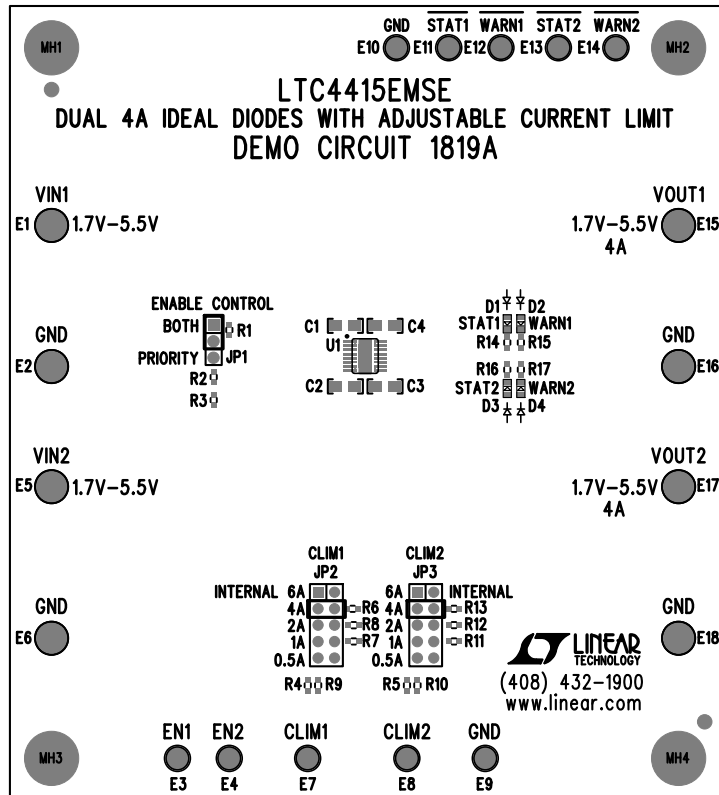
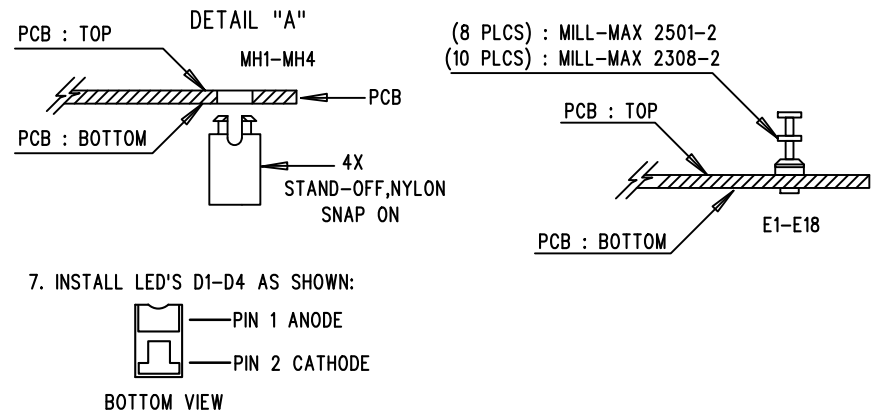


REVISION HISTORY				
ECO	REV	DESCRIPTION	APPR	DATE
-	2	PRODUCTION FAB	J.YEE	08-19-11



### NOTES: UNLESS OTHERWISE SPECIFIED

1. WORKMANSHIP SHALL BE IN ACCORDANCE WITH IPC-A-610.
2. ASSEMBLY PROCESS SHALL INCLUDE: REFLOW SOLDER TOP SIDE SMD. MAXIMUM SOLDER TEMPERATURE IS 240 DEGREES CELSIUS.
3. PARTS TO OMIT WILL BE SPECIFIED ON THE BILL OF MATERIALS. LOCATIONS OF OMITTED PARTS SHALL BE FREE OF SOLDER. MASK THE SOLDER STENCIL WHERE SMT PARTS ARE OMITTED.
4. INSTALL SHUNTS AS SHOWN ON ASSY DRAWING.
5. DEPANELIZE BOARDS AFTER ASSEMBLY AND ROUTE-OUT THE BREAKOUT TABS ON FOUR SIDES OF THE BOARD EDGE.
6. INSTALL TURRETS, BANANA JACKS AND STAND-OFFS AT LOCATIONS SHOWN BELOW:



APPROVALS			
PCB DES.	NC		
APP ENG.	J.YEE	<b>TITLE: TOP ASSEMBLY DRAWING:</b> <b>DUAL 4A IDEAL DIODES WITH</b> <b>ADJUSTABLE CURRENT LIMIT</b>	
		SIZE	REV.
		N/A	2
SCALE = NONE		IC NO. LTC4415EMSE DEMO CIRCUIT 1819A	
FILENAME: DC1819A-2.PCB		SHT 1 of 2	