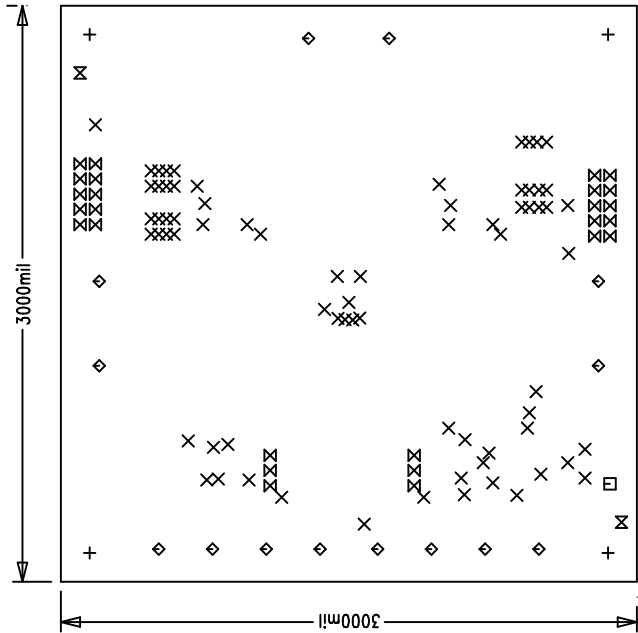


REVISIONS			
REV	APPR	DATE	



- ART01 = LAYER 1 (COMPONENT SIDE)
- ART02 = LAYER 2 (GND)
- ART03 = LAYER 3 (GND)
- ART04 = LAYER 4 (SOLDER SIDE)

NOTES : Unless Otherwise Specified

1. MATERIAL : FR4 OR EQUIVALENT EPOXY
2 OZ OUTER, 1 OZ INNER COPPER CLAD
THICKNESS .062 +/--.006 TOTAL OF 4 LAYERS
2. FINISH : ALL PLATED HOLES .001 MIN. / .0015 MAX. COPPER PLATE
3. SOLDER MASK OVER BARE COPPER (SBOBC)
4. SILKSCREEN : USING WHITE NON-CONDUCTIVE EPOXY INK
5. DO NOT ALTER ARTWORK e.g. TO ADD LOGO, DATE OR TEST CODE.


GOLD IMMERSION BOTH SIDES.

LI-COMPONENT SIDE

SIZE	QTY	SYM	PLTD	TOL
185	4	+	NO	+/-0.003
10	73	X	YES	+/-0.003
35	1	□	YES	+/-0.003
95	14	◇	YES	+/-0.003
31	26	⊗	YES	+/-0.003
70	2	⊠	NO	+/-0.003

APPROVALS

DRAWN	INIT	DATE
CHECK		
DESIGN	Antonia	
ENGR	Mark C.	
SCALE = NONE		



1630 McCarthy Blvd.
Milpitas, CA 95035
PH: (408)432-1900

TITLE: LTC4416EMS,
HIGH CURRENT DUAL POWER PATH CONTROLLER

SIZE: NONE
REV. 2
Demo Circuit DC1059A

DESIGN #
SHT 1 of 1