

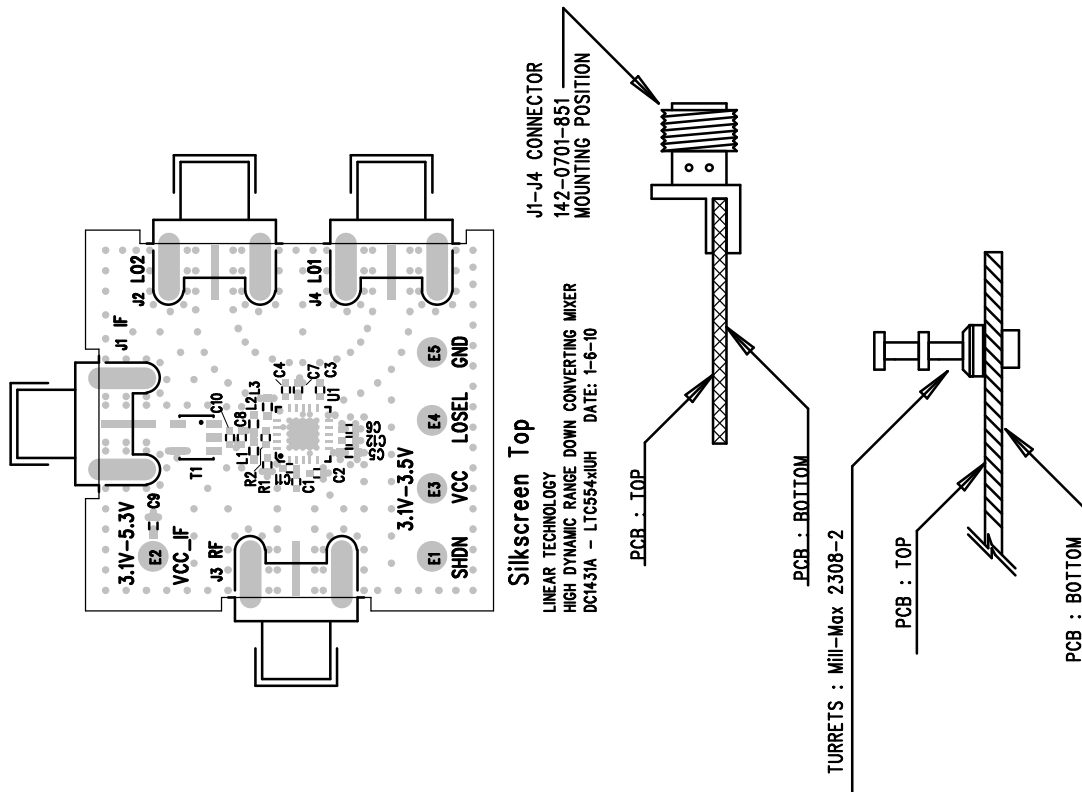
ECO	REV	DESCRIPTION	APPR	DATE
-	1	PRODUCTION	SUNNY H.	1-6-10

**NOTES: UNLESS OTHERWISE SPECIFIED**

1. WORKMANSHIP SHALL BE IN ACCORDANCE WITH IPC-A-610.
2. DEPANELIZE BOARDS AFTER ASSEMBLY AND ROUTE-OUT THE BREAKOUT TABS ON FOUR SIDES OF THE BOARD EDGE.
3. ASSEMBLY PROCESS SHALL INCLUDE: REFLOW SOLDER TOP SIDE SMD.
4. DO NOT APPLY ANY KIND OF ASSEMBLY STAMP OR QA STAMP TO ANY BOARD.
5. MARK EACH LTC PART NUMBER AND ASSEMBLY TYPE WITH BLACK PERMANENT MARKER AS SHOWN IN TABLE BELOW:

ASSY	U1
-A	LTC5540IUH
-B	LTC5541IUH
-C	LTC5542IUH
-D	LTC5543IUH

6. THE VENDOR SHOULD ASSEMBLE ALL THE PARTS DEFINED IN THE BILL OF MATERIAL INCLUDING HAND SOLDER COMPONENTS.



## APPROVALS

	INIT.	DATE
PCB DES.	K.L.	1-6-10
ENG.	SUNNY H.	1-6-10

SCALE: NONE

1630 MCCARTHY BLVD  
MILPITAS, CA 95035  
PH: (408)432-1900  
LTC CONFIDENTIAL -  
FOR CUSTOMER USE ONLY

**TITLE: TOP ASSEMBLY DRAWING**

## HIGH DYNAMIC RANGE DOWN CONVERTING MIXER

SIZE	IC NO.	REV.
NONE	LTC554xIUH DEMO CIRCUIT 1431A	1

FILENAME: DC1431A-1.PCB	SHT 1 of 2
-------------------------	------------