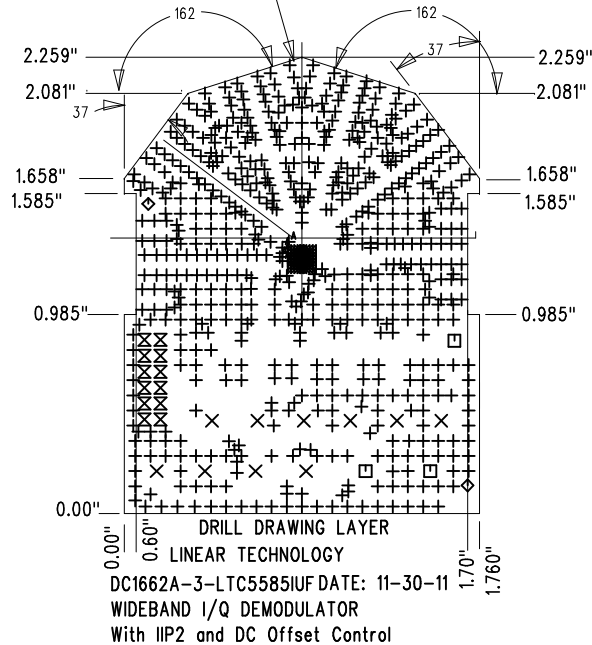
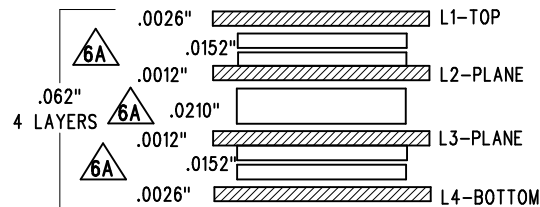


DO NOT MODIFY COPPER POUR IN ALL LAYERS.  
NO TABS ON SMA CONNECTOR AREA.  
SMA CONNECTOR NEEDS A SHARP EDGE. 6 PLACES.



SIZE	QTY	SYM	PLATED	TOL
0.01	620	+	YES	+/-0.003
0.065	10	X	YES	+/-0.003
0.093	3	□	YES	+/-0.003
0.07	2	◇	NO	+/-0.003
0.032	12	⊗	YES	+/-0.003
0.008	36	⊗	YES	+/-0.003
0.006	5	+ <sup>A</sup>	YES	+/-0.003

### LAYERING STRUCTURE

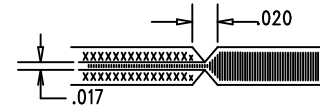


- NOTES :
- FAB PER IPC-A-600.
  - MATERIAL: -EPOXY FIBERGLASS, NELCO 4000-13  
-FINISHED THICKNESS TO BE 0.062" +/- .005"  
-TOTAL OF 4 LAYERS WITH 2 OZ. CU ON THE OUTER LAYERS AND 1 OZ. CU ON THE INNER LAYERS.  
-FLAMMABILITY RATING: 94 V-0 MINIMUM.
  - SIZE: CUT TO DIMENSIONS AND TOLERANCES SHOWN.  
0.00" ARE PRIMARY DATUMS.
  - DRILLING: -DRILL HOLES PER SCHEDULE. PLATE THROUGH HOLES WITH COPPER, 0.001" THICK MIN.  
-ALL HOLE SIZES ARE SPECIFIED AFTER PLATING.  
-HOLE LOCATION TOLERANCES ARE +/-0.003" IN RELATION TO CENTER
  - FINISH: -SMOBC USING LPI BOTH SIDES, COLOR GREEN.  
-GOLD IMMERSION BOTH SIDES.  
-FOR SILKSCREENS: USE WHITE NON-CONDUCTIVE INK.

### 6. CONTROLLED 50 OHM +/-5% IMPEDANCE FOR LAYER 1-2 TRACE WIDTH 30 MILS

**6A** SUBJECT TO CHANGE BY MANUFACTURER, DEPENDING ON DIELECTRIC CONSTANT DEVIATIONS. PLEASE CONSULT LTC.

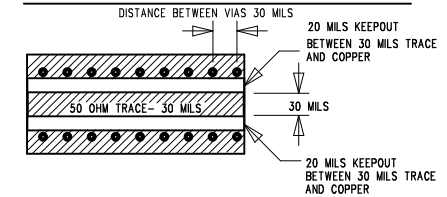
- DO NOT ALTER ARTWORK e.g. TO ADD LOGO OR DATE CODE.  
PAD SIZE CAN BE MODIFIED TO MEET END FINISH.
- PCBS ARE TO BE RoHS COMPLIANT.
- SCORING FOR PANELIZED PCB (PRODUCTION FAB ONLY):



### REVISION HISTORY

ECO	REV	DESCRIPTION	APP. ENG.	DATE
-	1	PRODUCTION	SUNNY H.	11-30-11

### IMPEDANCE TEST STRUCTURE LAYOUT



<b>UNLESS OTHERWISE SPECIFIED</b> DIMENSIONS ARE IN INCHES TOLERANCES: 0.XX" = ±0.01" 0.XXX" = ±0.005" INTERPRET DIM AND TOL PER ASME Y14.5M-1994 THIRD ANGLE PROJECTION	<b>APPROVALS</b>				1630 MCCARTHY BLVD MILPITAS, CA 95035 PH: (408)432-1900 www.linear.com LTC CONFIDENTIAL- FOR CUSTOMER USE ONLY	
	PCB DES.	AK				
	APP ENG.	SUNNY H.			<b>TITLE: FABRICATION DRAWING</b> <b>WIDEBAND I/Q DEMODULATOR</b> <b>With IIP2 and DC Offset Control</b>	
	SCALE = NONE		SIZE	IC NO.	LTC5585IU	REV
			N/A		DEMO CIRCUIT 1662A	3
FILENAME: DC1662A-3.PCB				SHT 1 OF 1		