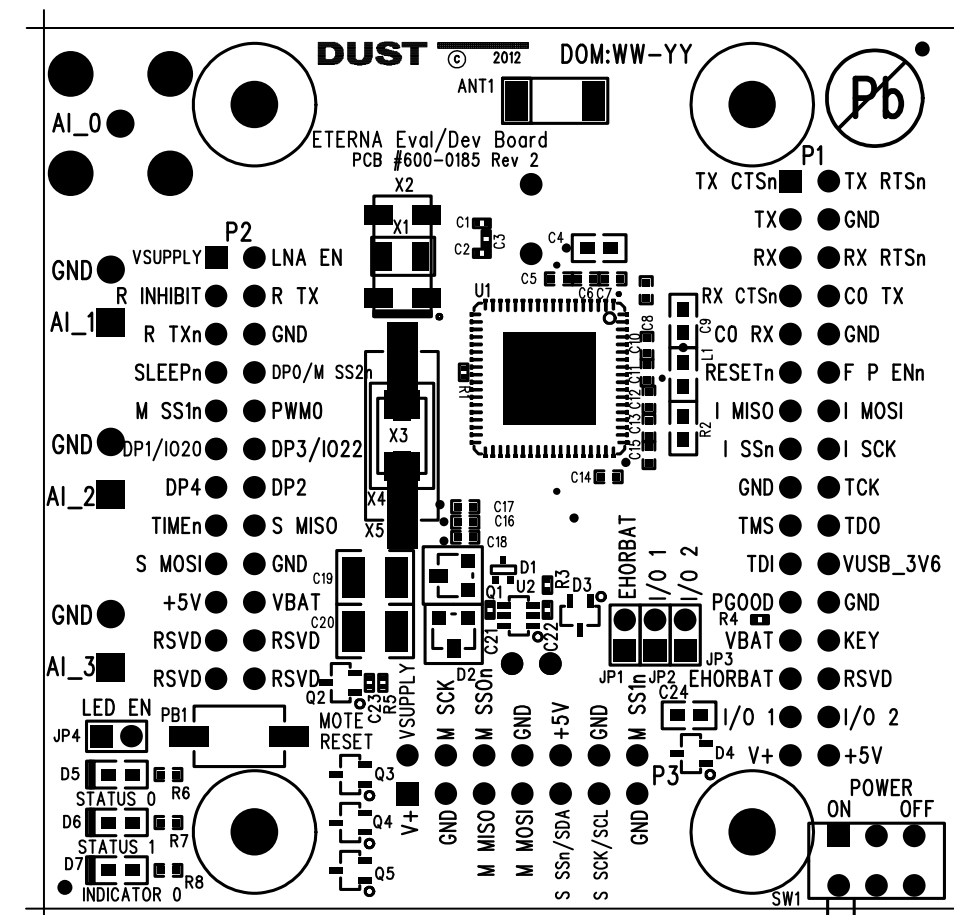
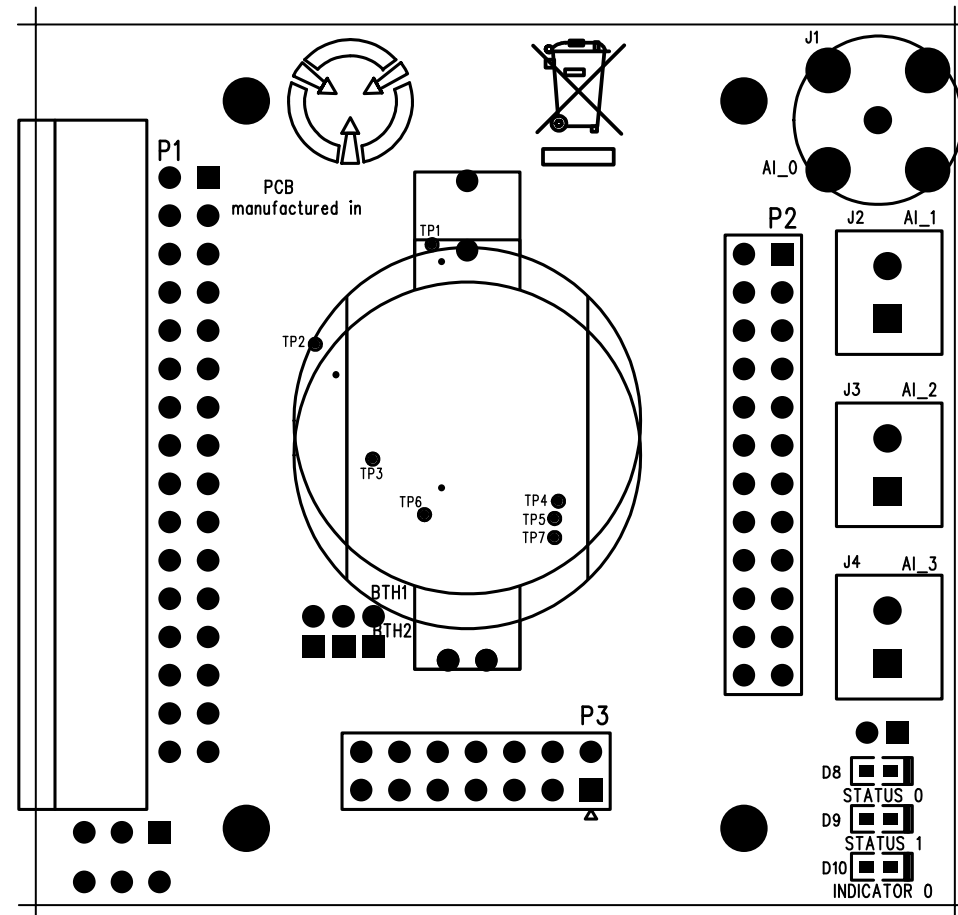


NOTES (UNLESS OTHERWISE SPECIFIED):

1. ASSEMBLE AND INSPECT IN ACCORDANCE WITH IPC STANDARD IPC-H-610D CLASS 2.
2. MAXIMUM PROTRUSION OF THE MOUSE BITES IS $+0.010''$.
3. FINISHED ASSEMBLY TO BE FREE OF ALL SOLDER FLUX RESIDUES.
4. FINISHED ASSEMBLY TO BE SHIPPED IN APPROVED ANTI-STATIC PACKAGING.
5. ALL PROCEDURES REQUIRE ROHS-6. NO CLEAN SOLDER.
6. INSTALL RF SHIELD ON THE TOP SIDE BY INSERTING PINS INTO THE CORRECT MOUNTING HOLE POSITIONS.
 - a) SOLDER ALL FOUR CORNERS ON THE TOP SIDE.
 - b) CLEAN ALL FLUX RESIDUE FROM SOLDERED AREAS.
7. PLACE LABEL ON TOP OF THE SHIELD. FORMAT:
 - a) DUST PART NUMBER/REV.
 - b) U1 LOT NUMBER.
 - c) DATE OF MANUFACTURE (WW-YY).

R E V I S I O N S				
ECO	REV	DESCRIPTION	DATE	APPROVED
1107	1	INITIAL RELEASE	3-08-12	
1120	2	MINOR CHANGES	4-10-12	



		UNLESS OTHERWISE SPECIFIED, DIMENSIONS ARE IN INCHES:	APPROVALS	DATE	DUST NETWORKS			
		TOLERANCES ARE:	DRAWN BY: R.P.D.	3-08-12	TITLE: PCA ASSY, MODULE, FRAZER			
		FRACTIONS: DECIMALS:	CHECKED					
		.XX ± .01	ENGRG					
		ANGLES: 0° 30" .XXX ± .005						
NEXT ASSY	USED ON	MATERIAL -	ISSUED		B	FSCM NO.	DWG NO. 705-0185	REV. 2
APPLICATION		FINISH -	CONTRACT NO.			SCALE: NONE	SHEET 1 OF 1	
		DO NOT SCALE DRAWING						