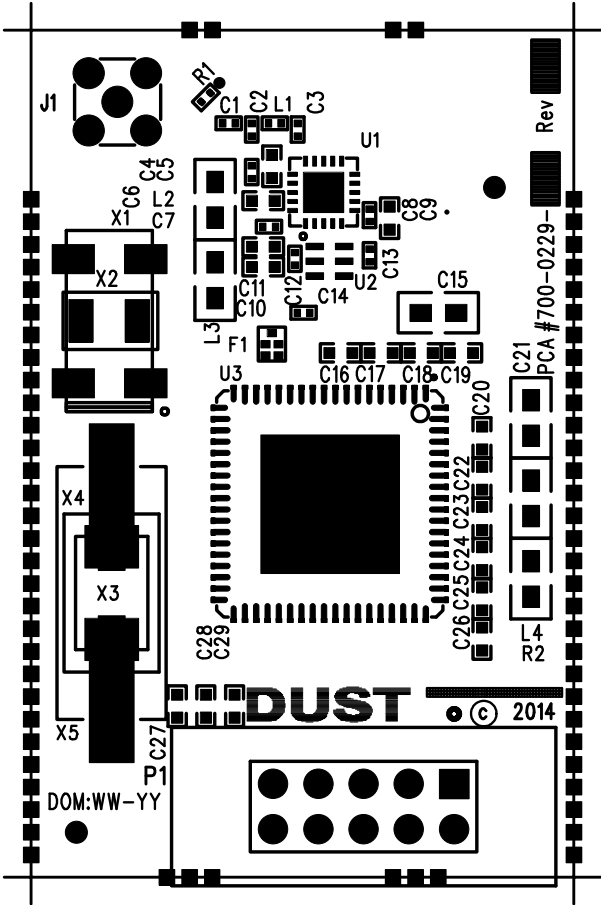


NOTES (UNLESS OTHERWISE SPECIFIED):

1. ASSEMBLE AND INSPECT IN ACCORDANCE WITH IPC STANDARD IPC-H-610D CLASS 2.
2. MAXIMUM PROTRUSION OF THE MOUSE BITES IS +0.010".
3. FINISHED ASSEMBLY TO BE FREE OF ALL SOLDER FLUX RESIDUES.
4. FINISHED ASSEMBLY TO BE SHIPPED IN APPROVED ANTI-STATIC PACKAGING.
5. ALL PROCEDURES REQUIRE ROHS-6. NO CLEAN SOLDER.
6. INSTALL RF SHIELD ON THE TOP SIDE BY INSERTING PINS INTO THE CORRECT MOUNTING HOLE POSITIONS.
  - a) SOLDER ALL FOUR CORNERS ON THE TOP SIDE.
  - b) CLEAN ALL FLUX RESIDUE FROM SOLDERED AREAS.
7. PLACE LABEL ON TOP OF THE SHIELD. FORMAT:
  - a) DUST PART NUMBER/REV.
  - b) U1 LOT NUMBER.
  - c) DATE OF MANUFACTURE (WW-YY).

R E V I S I O N S				
ECO	REV	DESCRIPTION	DATE	APPROVED
1329	1	INITIAL RELEASE	1-06-14	



SEE SEPARATE BOM, 700-0229-0001

		UNLESS OTHERWISE SPECIFIED, DIMENSIONS ARE IN INCHES:  TOLERANCES ARE: FRACTIONS:      DECIMALS: .XX ± .01 ANGLES: 0° 30" .XXX ± .005  MATERIAL -  FINISH -  DO NOT SCALE DRAWING	APPROVALS	DATE	DUST NETWORKS			
			DRAWN BY: R.P.D.	1-06-14	TITLE:  PCA ASSY, MODULE, GOBI			
			CHECKED					
			ENGRG					
NEXT ASSY	USED ON		ISSUED		B	FSCM NO.	DWG NO. 705-0229-0001	REV. 1
APPLICATION			CONTRACT NO.			SCALE: NONE		SHEET 1 OF 1