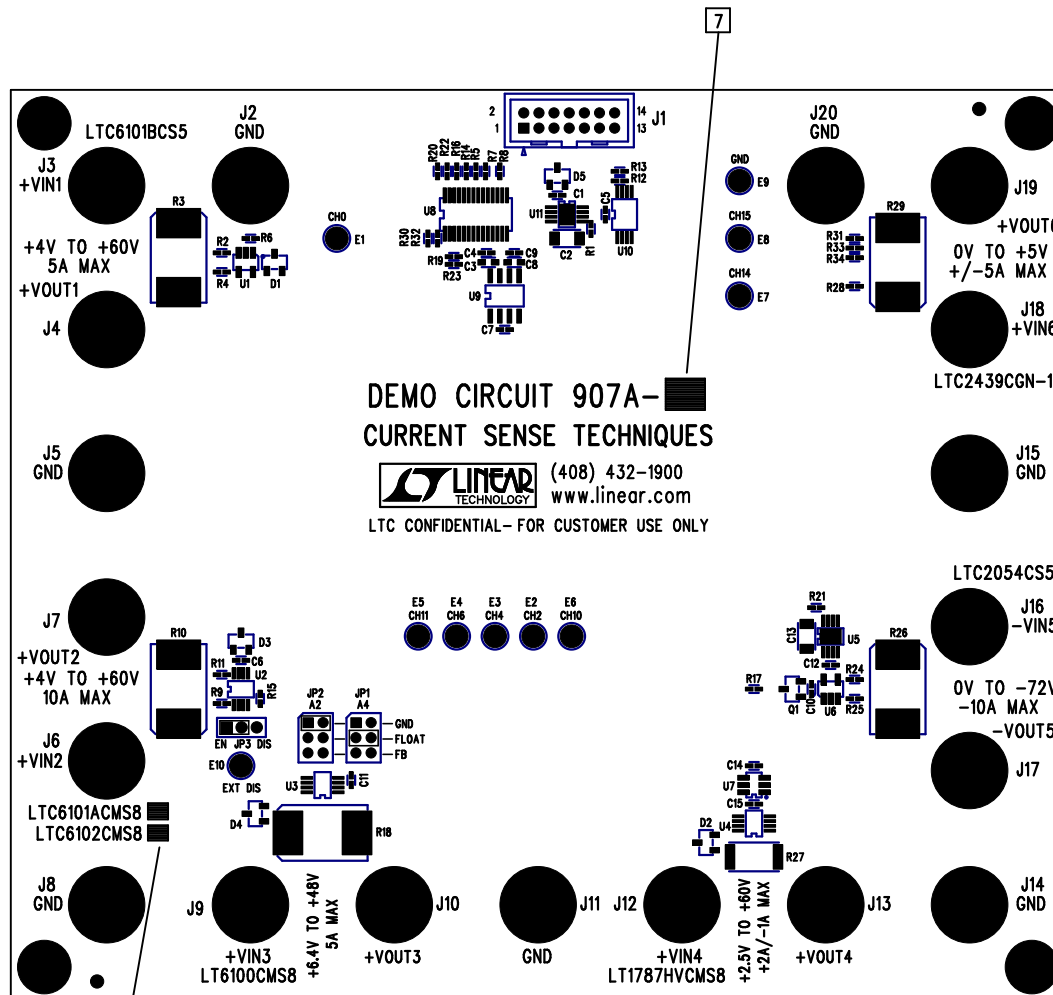
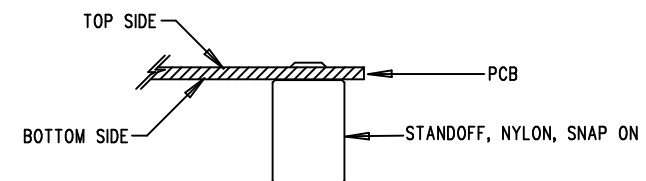


REVISIONS			
REV	DESCRIPTION	APPR	DATE
A-1	FINAL RELEASE	JM	09-12-05



NOTES: UNLESS OTHERWISE SPECIFIED

1. WORKMANSHIP SHALL BE IN ACCORDANCE WITH IPC-A-610.
2. INSTALL SHUNT ON JP1 & JP2 PIN 3 AND 4.
3. PARTS TO OMIT WILL BE SPECIFIED ON THE BILL OF MATERIALS. LOCATIONS OF OMITTED PARTS SHALL BE FREE OF SOLDER. MASK THE SOLDER STENCIL WHERE SMT PARTS ARE OMITTED.
4. DEPANELIZE BOARDS AFTER ASSEMBLY AND ROUTE-OUT THE BREAKOUT TABS ON FOUR SIDES OF THE BOARD EDGE.
5. ASSY PROCESSES SHALL INCLUDE: REFLOW SOLDER TOP SIDE SMD.
6. INSTALL 4 STANDOFFS AT 4 CORNERS AS SHOWN BELOW:



7. THERE ARE 2 ASSEMBLY VERSIONS. USE BLACK INK MARKER TO WRITE ON THE SELECTED AREAS AS BELOW:

VERSION	U2
-A	LTC6101ACMS8 <input checked="" type="checkbox"/>
-B	LTC6102CMS8 <input checked="" type="checkbox"/>

APPROVALS

	INIT	DATE
DRAWN		
CHECK		
DESIGN	KIM T.	09-12-05
ENGR	JON M.	09-12-05
SCALE = NONE		

LINEAR TECHNOLOGY 1630 McCarthy Blvd.
Milpitas, CA 95035
PH: (408)432-1900

TITLE: TOP ASSEMBLY DRAWING
CURRENT SENSE TECHNIQUES

SIZE A DEMO DC907A-1 REV. A-1

DES- 0000 SHT 1 of 1