

TOP SILKSCREEN

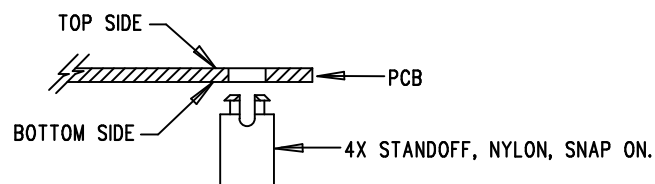
ANALOG DEVICES DATE: 07-18-2018


DC2839A-2-LTC6115

HIGH VOLTAGE HIGH SIDE CURRENT AND VOLTAGE SENSE

## NOTES: UNLESS OTHERWISE SPECIFIED

1. WORKMANSHIP SHALL BE IN ACCORDANCE WITH IPC-A-610.
2. ASSEMBLY PROCESS SHALL INCLUDE: REFLOW SOLDER TOP SIDE SMD. MAXIMUM SOLDER TEMPERATURE IS 240 DEGREES CELSIUS.
3. PARTS TO OMIT WILL BE SPECIFIED ON THE BILL OF MATERIALS. LOCATIONS OF OMITTED PARTS SHALL BE FREE OF SOLDER. MASK THE SOLDER STENCIL WHERE SMT PARTS ARE OMITTED.
4. INSTALL SHUNTS AS SHOWN ON ASSY DRAWING.
5. DEPANELIZE BOARDS AFTER ASSEMBLY AND ROUTE-OUT THE BREAKOUT TABS ON FOUR SIDES OF THE BOARD EDGE.
6. DO NOT APPLY ANY KIND OF ASSEMBLY STAMP OR QA STAMP TO ANY BOARD.
7. INSTALL 4 STANDOFFS AT 4 LOCATIONS AS SHOWN BELOW:



APPROVALS		 AHEAD OF WHAT'S POSSIBLE™ 1630 MCCARTHY BLVD MILPITAS, CA 95035 PH: (408)432-1900 CONFIDENTIAL - FOR CUSTOMER USE ONLY	
PCB DES.	AK.		
APP ENG.	CATHERINE C.	TITLE: ASSEMBLY TOP DRAWING	
		HIGH VOLTAGE HIGH SIDE CURRENT AND VOLTAGE SENSE	
		SIZE	IC NO.
		N/A	LTC6115 DC2839A
SCALE = NONE		FILENAME: DC2839A-2.PCB	REV 2
		SHT 1 OF 1	