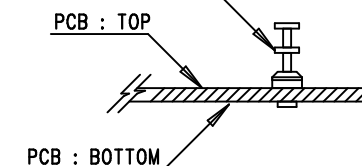


REVISION HISTORY				
ECO	REV	DESCRIPTION	APPROVAL	DATE
	1	PRODUCTION	CLARENCE M.	04/24/12

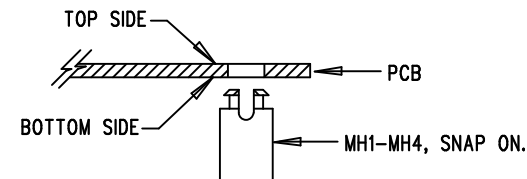
## NOTES: UNLESS OTHERWISE SPECIFIED

1. WORKMANSHIP SHALL BE IN ACCORDANCE WITH IPC-A-610.
2. ASSEMBLY PROCESS SHALL INCLUDE REFLOW SOLDER TOP AND BOTTOM SIDES. MAXIMUM SOLDER TEMPERATURE SHALL NOT EXCEED 240 DEGREES CELSIUS.
3. FOR COMPONENTS DESIGNATED AS OPTIONAL ON THE BILL OF MATERIALS, APPLY SOLDERPASTE TO THEIR LAND PATTERNS AS WELL.
4. INSTALL SHUNTS AS SHOWN ON ASSY DRAWING.
5. DEPANELIZE BOARDS AFTER ASSEMBLY AND ROUTE-OUT THE BREAKOUT TABS ON ALL BOARD EDGES.
6. DO NOT APPLY ANY KIND OF ASSEMBLY STAMP OR QA STAMP TO ANY BOARD.
7. INSTALL TURRETS E1-E8 AS SHOWN BELOW:

TURRENT (MILL MAX#2501, 2308 TYPES)

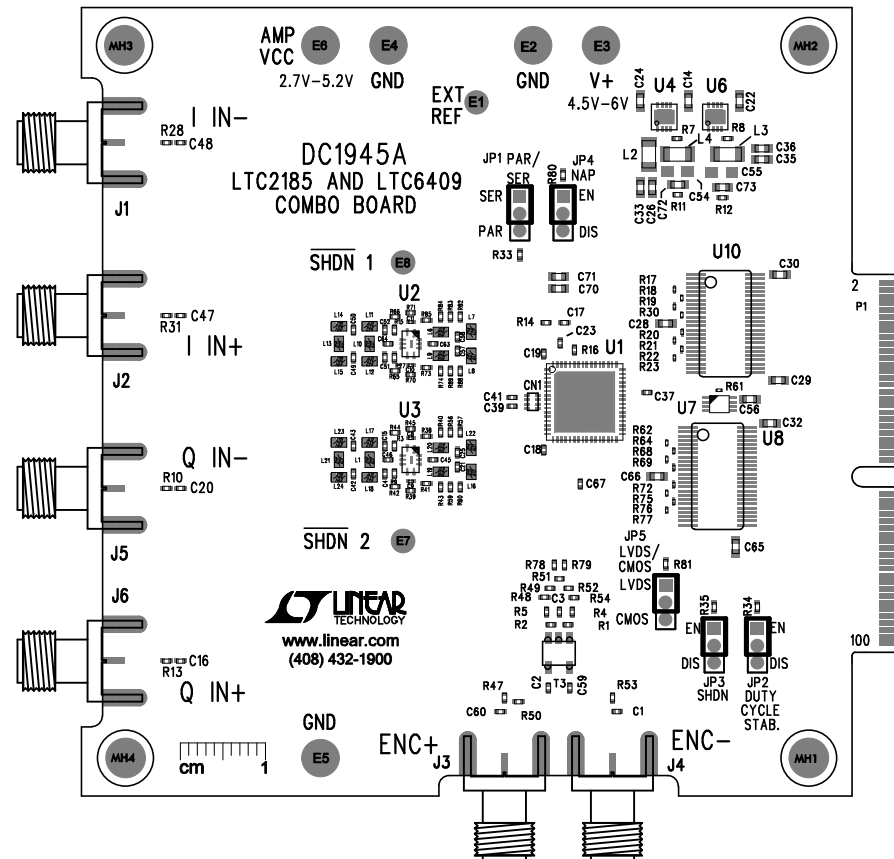
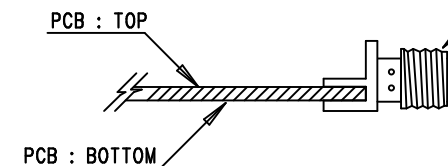



8. INSTALL 4 STANDOFFS AT 4 LOCATIONS AS SHOWN BELOW:



9. INSTALL J1-J6 SIDE-LAUNCH SMA CONNECTORS AS SHOWN BELOW:

CONNECTOR : 142-0701-851, J1-J6



APPROVALS		 <div> 1830 MCCARTHY BLVD  MILPITAS, CA 95035  PH: (408)432-1900  www.linear.com  LTC CONFIDENTIAL-  FOR CUSTOMER USE ONLY </div>		
PCB DES.	M.HAWKINS			
APP. ENG.	CLARENCE M.	TITLE: ASSEMBLY DRAWING, TOP LTC2185 AND LTC6409 COMBO BOARD		
		SIZE N/A	IC NO LTC2185IUP, LTC6409IUDB DEMO CIRCUIT 1945A	REV 2
SCALE: NONE		FILENAME: DC1945A-2.PCB		SHT 1 of 2