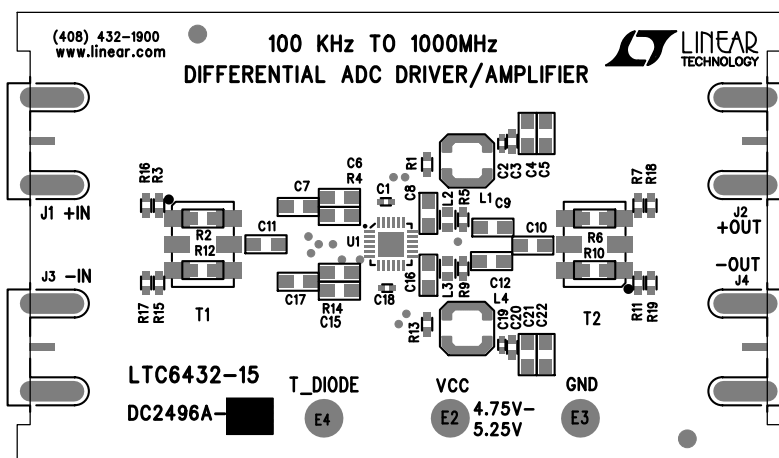


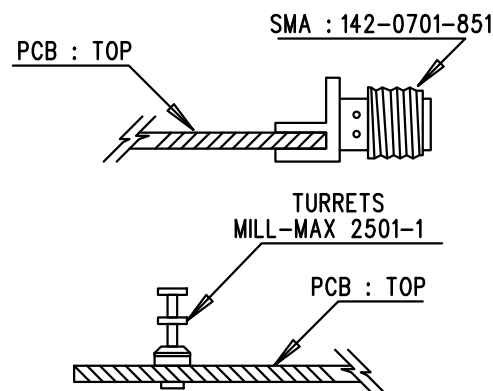
REVISION HISTORY				
ECO	REV	DESCRIPTION	APP. ENG.	DATE
-	2	2ND PROTOTYPE	JOHN C.	02-02-17

NOTES: UNLESS OTHERWISE SPECIFIED


1. WORKMANSHIP SHALL BE IN ACCORDANCE WITH IPC-A-610.
2. ASSEMBLY PROCESS SHALL INCLUDE: REFLOW SOLDER TOP SIDE SMD. MAXIMUM SOLDER TEMPERATURE IS 240 DEGREES CELSIUS.
3. PARTS TO OMIT WILL BE SPECIFIED ON THE BILL OF MATERIALS. LOCATIONS OF OMITTED PARTS SHALL BE FREE OF SOLDER. MASK THE SOLDER STENCIL WHERE SMT PARTS ARE OMITTED.
4. NO SHUNT.
5. DEPANELIZE BOARDS AFTER ASSEMBLY AND ROUTE-OUT THE BREAKOUT TABS ON FOUR SIDES OF THE BOARD EDGE.
6. DO NOT APPLY ANY KIND OF ASSEMBLY STAMP OR QA STAMP TO ANY BOARD.
7. INSTALL SMA CONNECTORS AND TURRETS AS SHOWN BELOW:



TOP SILKSCREEN
 LINEAR TECHNOLOGY
 DC2496A-2 LTC6432-15
 100 KHz TO 1000MHz
 DIFFERENTIAL ADC
 DRIVER/AMPLIFIER
 DATE: 02-2-2017



ASSY	U1	FREQ.	T1,T2	C10,C11	
-A	LTC6432-15	100kHz-20MHz	SYTX2-6T-1+	OPT	
-B	LTC6432-15	2-200MHz	ADT2-1T+	1uF, 0805	

APPROVALS		 <div> 1630 MCCARTHY BLVD MILPITAS, CA 95035 PH: (408)432-1900 www.linear.com LTC CONFIDENTIAL- FOR CUSTOMER USE ONLY </div>		
PCB DES.	AK			
APP ENG.	JOHN C.	TITLE: TOP ASSEMBLY DRAWING 100 KHz TO 1000MHz DIFFERENTIAL ADC DRIVER/AMPLIFIER		
		SIZE	IC NO. LTC6432-15	REV.
		N/A	DEMO BOARD 2496A	2
SCALE = NONE		FILENAME: DC2496A-2.PCB		SHT 1 OF 1