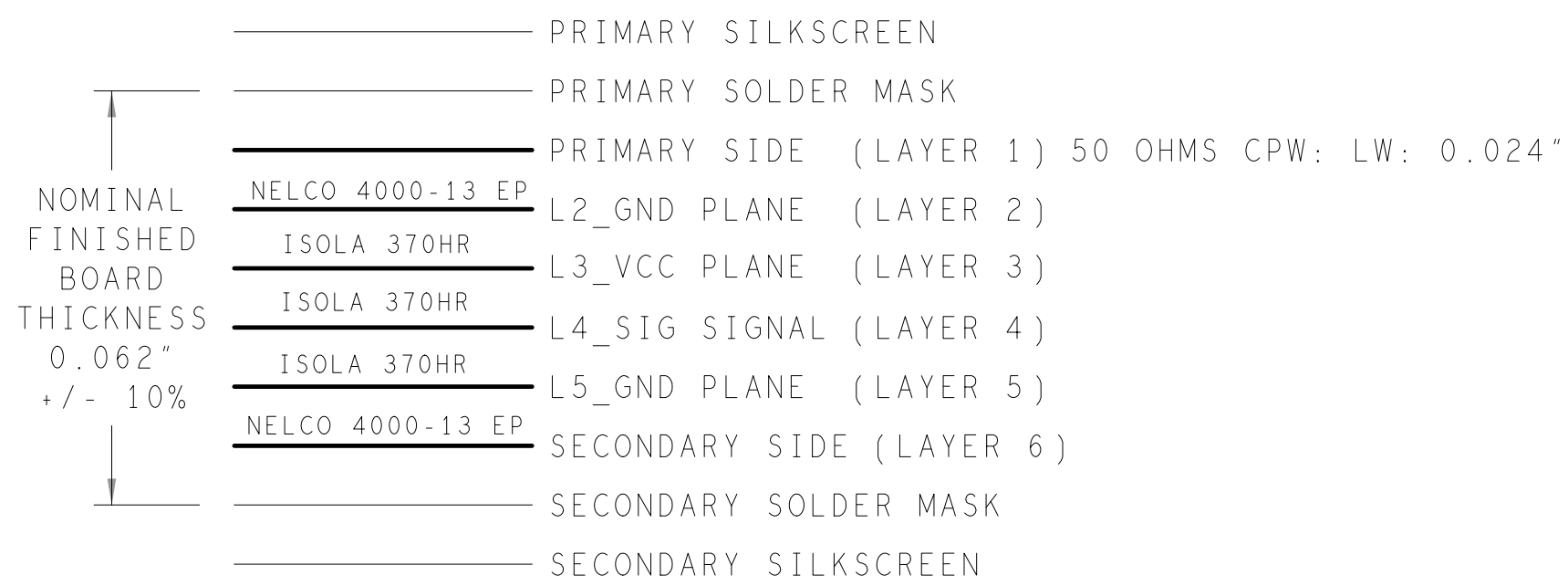
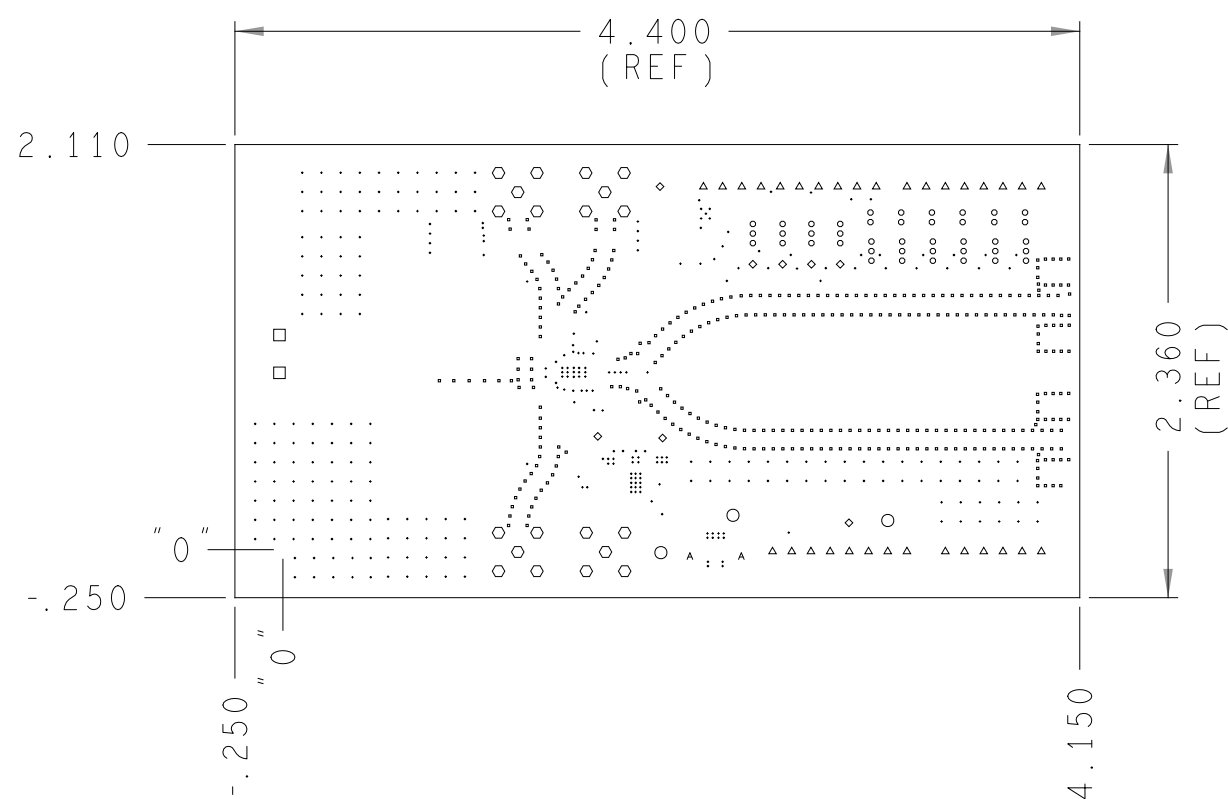


REVISIONS			
REV	DESCRIPTION	DATE	APPROVED
A	INITIAL RELEASE	20JUN19	JVILLANUEVA
B	AS PER ECR-090443	08OCT19	JVILLANUEVA
B1	AS PER ECR-091439	09JAN20	CGOZON
C	AS PER ECR-099516	29OCT20	CGOZON
D	AS PER ECR-100326	22NOV20	CGOZON
E	AS PER ECR-105524	16NOV21	HHASHEMI

## 6 LAYER STACKUP



CHARACTERISTIC IMPEDANCE = 50 OHMS +/- 10%  
ARTWORK LINE WIDTH FOR  
IMPEDANCE CONTROLLED LINES = 0.024"




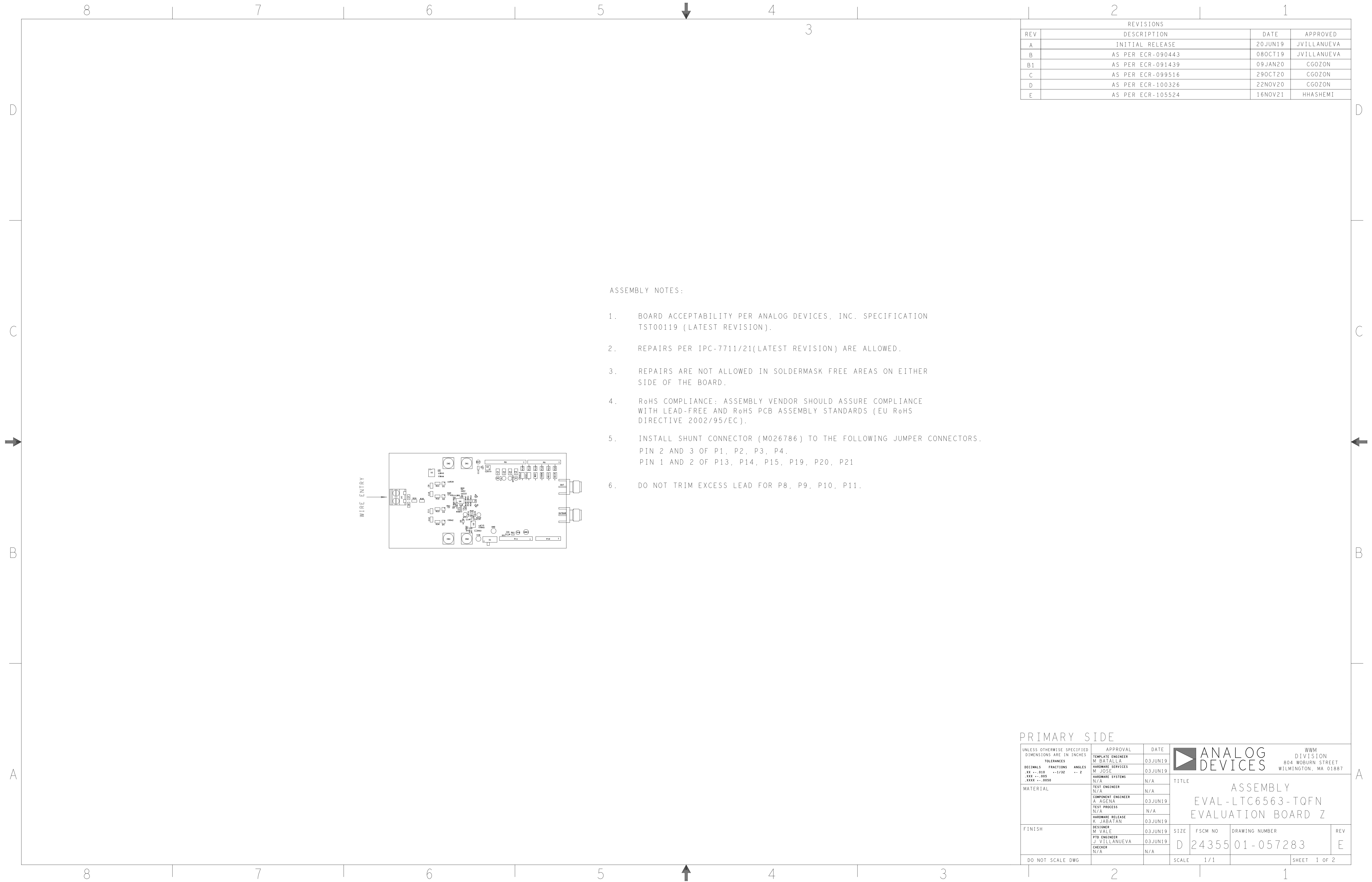
## HOLE TOLERANCE

UNLESS SPECIFIED  
PLATED: +/- 3 MILS  
NON PLATED: +/- 2 MILS

DRILL CHART: TOP to BOTTOM				
ALL UNITS ARE IN MILS				
FIGURE	SIZE	PLATED	QTY	TOLERANCE/NOTES
•	8.0	PLATED	323	DIA MAX
•	12.0	PLATED	321	DIA MAX
◦	30.0	PLATED	42	
◦	40.0	PLATED	8	
◦	45.0	PLATED	32	
◻	60.0	PLATED	2	
◦	63.0	PLATED	3	
◦	65.0	PLATED	20	
•	35.0	NON-PLATED	2	

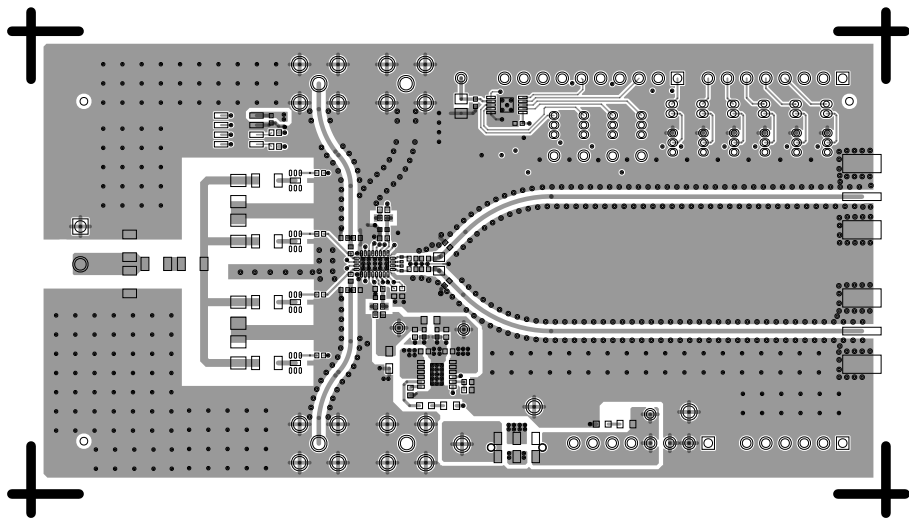
## PRIMARY SIDE

UNLESS OTHERWISE SPECIFIED DIMENSIONS ARE IN INCHES			APPROVAL	DATE	 <b>ANALOG DEVICES</b>		WWW DIVISION 804 WOUBURN STREET WILMINGTON, MA 01887	
TOLERANCES			TEMPLATE ENGINEER M BATAALLA	03JUN19				
DECIMALS	FRACTIONS	ANGLES	HARDWARE SERVICES M JOSSE	03JUN19	TITLE  FABRICATION EVAL-LTC6563-TQFN EVALUATION BOARD Z			
.xx --.010	--.1/32	--.2	HARDWARE SYSTEMS N/A	N/A				
.xxx --.005								
.xxxx --.0050								
MATERIAL		TEST ENGINEER N/A	N/A					
		COMPONENT ENGINEER A AGENA	03JUN19					
		TEST PROCESS N/A	N/A					
		HARDWARE RELEASE K JABATAN	03JUN19					
FINISH		DESIGNER M VALE	03JUN19	SIZE		FSCM NO	DRAWING NUMBER	REV
		PTD ENGINEER J VILLANUEVA	03JUN19	D		24355	09-057283	E
		CHECKER N/A	N/A					
DO NOT SCALE DWG				SCALE 1/1		SHEET 1 of 1		





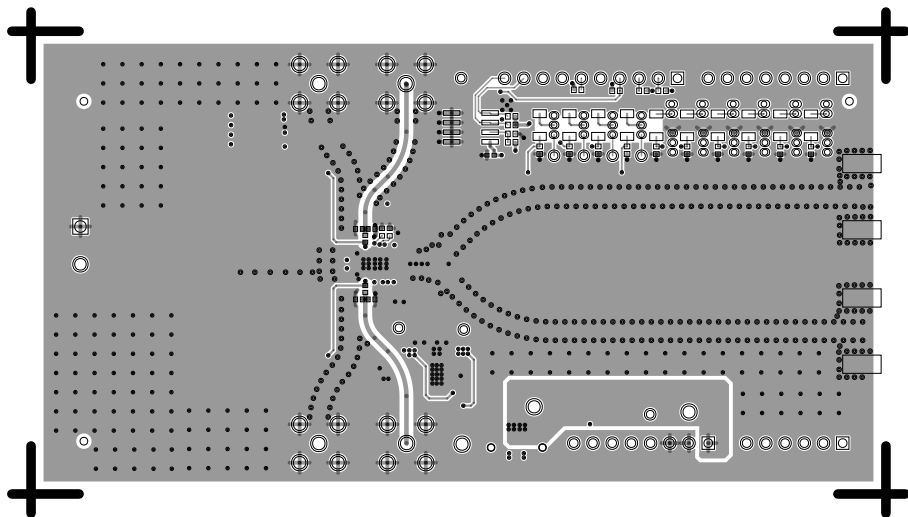
L1 PRIMARY  
08-057283-01  
REV E



L6 SECONDARY

08-057283-02

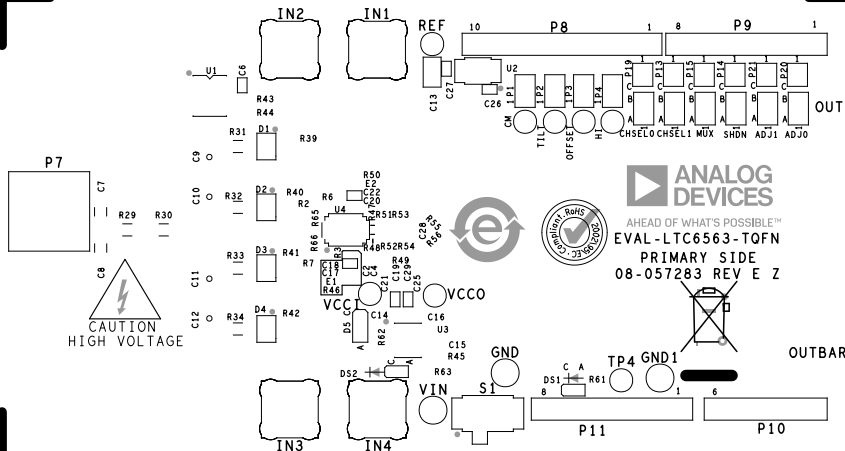
REV E



# SILKSCREEN PRIMARY

08-057283-03

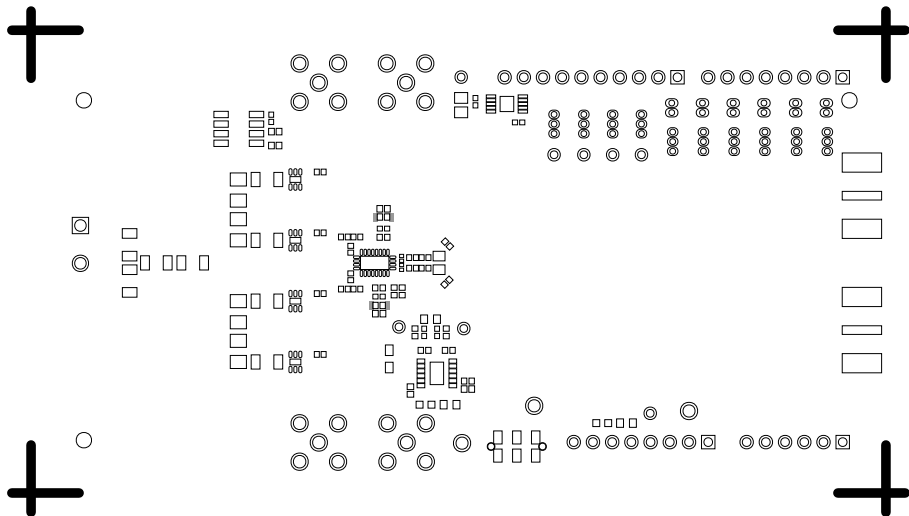
REV E



SOLDERMASK PRIMARY

08-057283-04

REV E



REV E

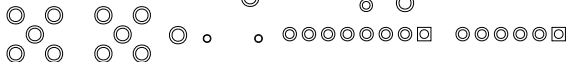
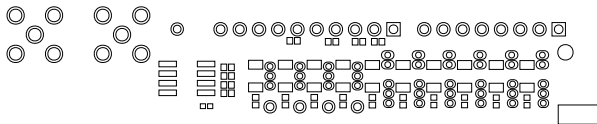
08-02583 REV E 2  
SECONDARY SIDE  
CS2E10  
CS2E11  
CS2E12  
CS2E13  
CS2E14  
CS2E15  
CS2E16  
CS2E17  
CS2E18  
CS2E19  
CS2E20  
CS2E21  
CS2E22  
CS2E23  
CS2E24  
CS2E25  
CS2E26  
CS2E27  
CS2E28  
CS2E29  
CS2E30  
CS2E31  
CS2E32  
CS2E33  
CS2E34  
CS2E35  
CS2E36  
CS2E37  
CS2E38  
CS2E39  
CS2E40  
CS2E41  
CS2E42  
CS2E43  
CS2E44  
CS2E45  
CS2E46  
CS2E47  
CS2E48  
CS2E49  
CS2E50  
CS2E51  
CS2E52  
CS2E53  
CS2E54  
CS2E55  
CS2E56  
CS2E57  
CS2E58  
CS2E59  
CS2E60  
CS2E61  
CS2E62  
CS2E63  
CS2E64  
CS2E65  
CS2E66  
CS2E67  
CS2E68  
CS2E69  
CS2E70  
CS2E71  
CS2E72  
CS2E73  
CS2E74  
CS2E75  
CS2E76  
CS2E77  
CS2E78  
CS2E79  
CS2E80  
CS2E81  
CS2E82  
CS2E83  
CS2E84  
CS2E85  
CS2E86  
CS2E87  
CS2E88  
CS2E89  
CS2E90  
CS2E91  
CS2E92  
CS2E93  
CS2E94  
CS2E95  
CS2E96  
CS2E97  
CS2E98  
CS2E99  
CS2E100  
CS2E101  
CS2E102  
CS2E103  
CS2E104  
CS2E105  
CS2E106  
CS2E107  
CS2E108  
CS2E109  
CS2E110  
CS2E111  
CS2E112  
CS2E113  
CS2E114  
CS2E115  
CS2E116  
CS2E117  
CS2E118  
CS2E119  
CS2E120  
CS2E121  
CS2E122  
CS2E123  
CS2E124  
CS2E125  
CS2E126  
CS2E127  
CS2E128  
CS2E129  
CS2E130  
CS2E131  
CS2E132  
CS2E133  
CS2E134  
CS2E135  
CS2E136  
CS2E137  
CS2E138  
CS2E139  
CS2E140  
CS2E141  
CS2E142  
CS2E143  
CS2E144  
CS2E145  
CS2E146  
CS2E147  
CS2E148  
CS2E149  
CS2E150  
CS2E151  
CS2E152  
CS2E153  
CS2E154  
CS2E155  
CS2E156  
CS2E157  
CS2E158  
CS2E159  
CS2E160  
CS2E161  
CS2E162  
CS2E163  
CS2E164  
CS2E165  
CS2E166  
CS2E167  
CS2E168  
CS2E169  
CS2E170  
CS2E171  
CS2E172  
CS2E173  
CS2E174  
CS2E175  
CS2E176  
CS2E177  
CS2E178  
CS2E179  
CS2E180  
CS2E181  
CS2E182  
CS2E183  
CS2E184  
CS2E185  
CS2E186  
CS2E187  
CS2E188  
CS2E189  
CS2E190  
CS2E191  
CS2E192  
CS2E193  
CS2E194  
CS2E195  
CS2E196  
CS2E197  
CS2E198  
CS2E199  
CS2E200  
CS2E201  
CS2E202  
CS2E203  
CS2E204  
CS2E205  
CS2E206  
CS2E207  
CS2E208  
CS2E209  
CS2E210  
CS2E211  
CS2E212  
CS2E213  
CS2E214  
CS2E215  
CS2E216  
CS2E217  
CS2E218  
CS2E219  
CS2E220  
CS2E221  
CS2E222  
CS2E223  
CS2E224  
CS2E225  
CS2E226  
CS2E227  
CS2E228  
CS2E229  
CS2E230  
CS2E231  
CS2E232  
CS2E233  
CS2E234  
CS2E235  
CS2E236  
CS2E237  
CS2E238  
CS2E239  
CS2E240  
CS2E241  
CS2E242  
CS2E243  
CS2E244  
CS2E245  
CS2E246  
CS2E247  
CS2E248  
CS2E249  
CS2E250  
CS2E251  
CS2E252  
CS2E253  
CS2E254  
CS2E255  
CS2E256  
CS2E257  
CS2E258  
CS2E259  
CS2E260  
CS2E261  
CS2E262  
CS2E263  
CS2E264  
CS2E265  
CS2E266  
CS2E267  
CS2E268  
CS2E269  
CS2E270  
CS2E271  
CS2E272  
CS2E273  
CS2E274  
CS2E275  
CS2E276  
CS2E277  
CS2E278  
CS2E279  
CS2E280  
CS2E281  
CS2E282  
CS2E283  
CS2E284  
CS2E285  
CS2E286  
CS2E287  
CS2E288  
CS2E289  
CS2E290  
CS2E291  
CS2E292  
CS2E293  
CS2E294  
CS2E295  
CS2E296  
CS2E297  
CS2E298  
CS2E299  
CS2E300  
CS2E301  
CS2E302  
CS2E303  
CS2E304  
CS2E305  
CS2E306  
CS2E307  
CS2E308  
CS2E309  
CS2E310  
CS2E311  
CS2E312  
CS2E313  
CS2E314  
CS2E315  
CS2E316  
CS2E317  
CS2E318  
CS2E319  
CS2E320  
CS2E321  
CS2E322  
CS2E323  
CS2E324  
CS2E325  
CS2E326  
CS2E327  
CS2E328  
CS2E329  
CS2E330  
CS2E331  
CS2E332  
CS2E333  
CS2E334  
CS2E335  
CS2E336  
CS2E337  
CS2E338  
CS2E339  
CS2E340  
CS2E341  
CS2E342  
CS2E343  
CS2E344  
CS2E345  
CS2E346  
CS2E347  
CS2E348  
CS2E349  
CS2E350  
CS2E351  
CS2E352  
CS2E353  
CS2E354  
CS2E355  
CS2E356  
CS2E357  
CS2E358  
CS2E359  
CS2E360  
CS2E361  
CS2E362  
CS2E363  
CS2E364  
CS2E365  
CS2E366  
CS2E367  
CS2E368  
CS2E369  
CS2E370  
CS2E371  
CS2E372  
CS2E373  
CS2E374  
CS2E375  
CS2E376  
CS2E377  
CS2E378  
CS2E379  
CS2E380  
CS2E381  
CS2E382  
CS2E383  
CS2E384  
CS2E385  
CS2E386  
CS2E387  
CS2E388  
CS2E389  
CS2E390  
CS2E391  
CS2E392  
CS2E393  
CS2E394  
CS2E395  
CS2E396  
CS2E397  
CS2E398  
CS2E399  
CS2E400  
CS2E401  
CS2E402  
CS2E403  
CS2E404  
CS2E405  
CS2E406  
CS2E407  
CS2E408  
CS2E409  
CS2E410  
CS2E411  
CS2E412  
CS2E413  
CS2E414  
CS2E415  
CS2E416  
CS2E417  
CS2E418  
CS2E419  
CS2E420  
CS2E421  
CS2E422  
CS2E423  
CS2E424  
CS2E425  
CS2E426  
CS2E427  
CS2E428  
CS2E429  
CS2E430  
CS2E431  
CS2E432  
CS2E433  
CS2E434  
CS2E435  
CS2E436  
CS2E437  
CS2E438  
CS2E439  
CS2E440  
CS2E441  
CS2E442  
CS2E443  
CS2E444  
CS2E445  
CS2E446  
CS2E447  
CS2E448  
CS2E449  
CS2E450  
CS2E451  
CS2E452  
CS2E453  
CS2E454  
CS2E455  
CS2E456  
CS2E457  
CS2E458  
CS2E459  
CS2E460  
CS2E461  
CS2E462  
CS2E463  
CS2E464  
CS2E465  
CS2E466  
CS2E467  
CS2E468  
CS2E469  
CS2E470  
CS2E471  
CS2E472  
CS2E473  
CS2E474  
CS2E475  
CS2E476  
CS2E477  
CS2E478  
CS2E479  
CS2E480  
CS2E481  
CS2E482  
CS2E483  
CS2E484  
CS2E485  
CS2E486  
CS2E487  
CS2E488  
CS2E489  
CS2E490  
CS2E491  
CS2E492  
CS2E493  
CS2E494  
CS2E495  
CS2E496  
CS2E497  
CS2E498  
CS2E499  
CS2E500  
CS2E501  
CS2E502  
CS2E503  
CS2E504  
CS2E505  
CS2E506  
CS2E507  
CS2E508  
CS2E509  
CS2E510  
CS2E511  
CS2E512  
CS2E513  
CS2E514  
CS2E515  
CS2E516  
CS2E517  
CS2E518  
CS2E519  
CS2E520  
CS2E521  
CS2E522  
CS2E523  
CS2E524  
CS2E525  
CS2E526  
CS2E527  
CS2E528  
CS2E529  
CS2E53



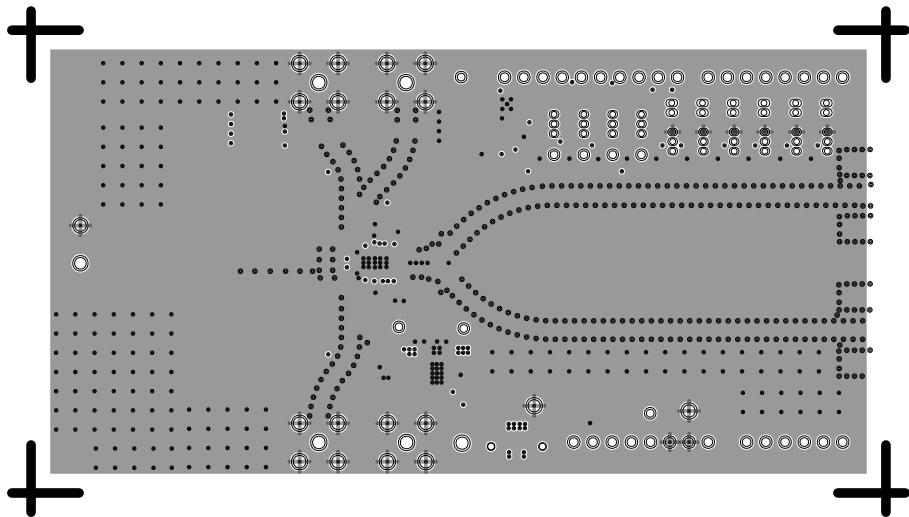
SOLDERMASK SECONDARY

08-057283-06

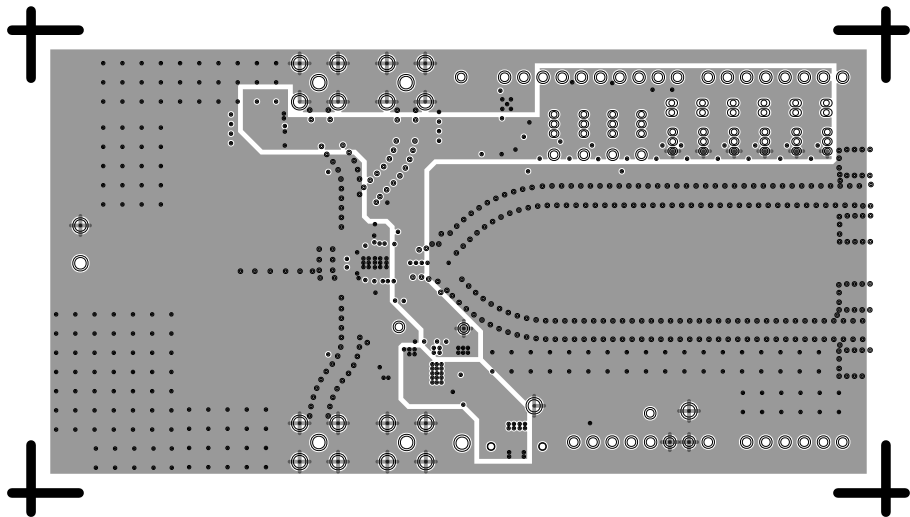
REV E



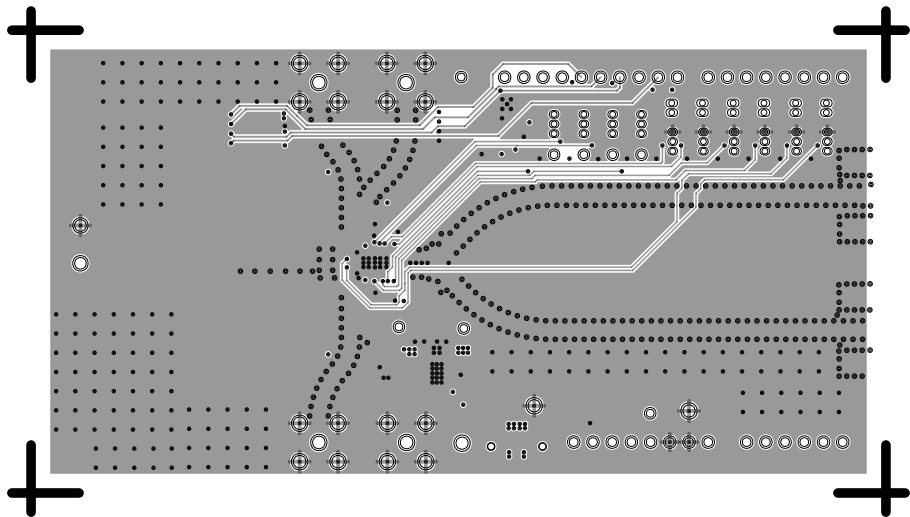
L2 GND  
08-057283-07  
REV E



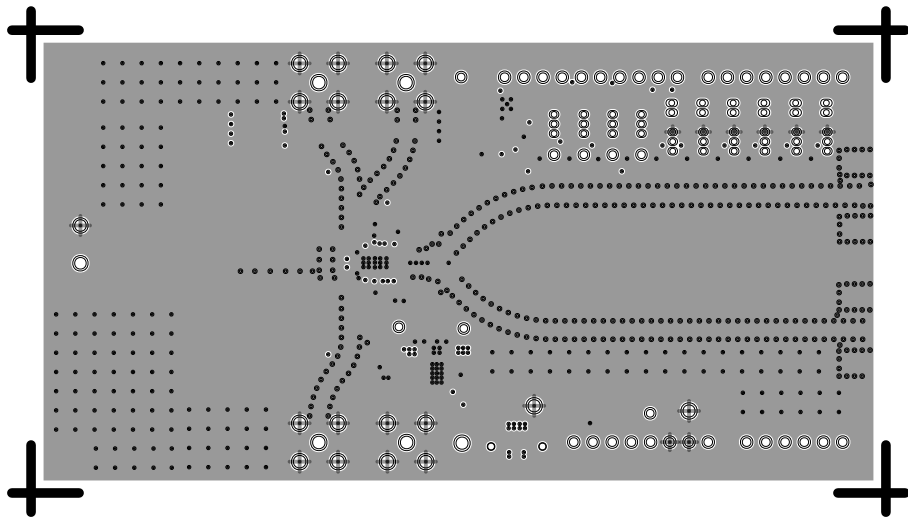
L3 VCC  
08-057283-08  
REV E



L4\_SIG  
08-057283-09  
REV E



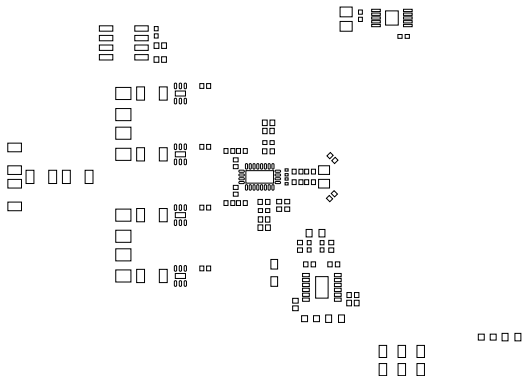
L5 GND  
08-057283-10  
REV E



PASTEMASK PRIMARY

08-057283-11

REV E



PASTEMASK SECONDARY

08-057283-12

REV E

