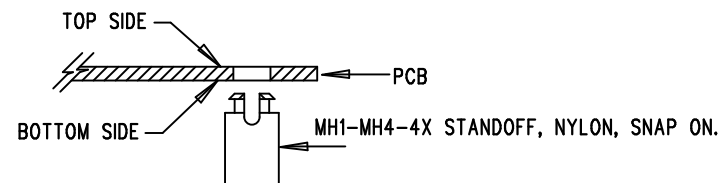



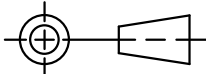
TOP SILKSCREEN
ANALOG DEVICES
DC2767A-LTC6754
HIGH SPEED COMPARATOR
WITH LVDS OUTPUT
DATE: 09-11-2017

REVISION HISTORY				
ECO	REV	DESCRIPTION	APP. ENG.	DATE
-	1	1ST PROTO	PHILIP K.	9-11-17

NOTES: UNLESS OTHERWISE SPECIFIED

1. WORKMANSHIP SHALL BE IN ACCORDANCE WITH IPC-A-610.
2. ASSEMBLY PROCESS SHALL INCLUDE: REFLOW SOLDER TOP SIDE SMD. MAXIMUM SOLDER TEMPERATURE IS 240 DEGREES CELSIUS.
3. PARTS TO OMIT WILL BE SPECIFIED ON THE BILL OF MATERIALS. LOCATIONS OF OMITTED PARTS SHALL BE FREE OF SOLDER. MASK THE SOLDER STENCIL WHERE SMT PARTS ARE OMITTED.
4. INSTALL SHUNTS AS SHOWN ON ASSY DRAWING.
5. DEPANELIZE BOARDS AFTER ASSEMBLY AND ROUTE-OUT THE BREAKOUT TABS ON FOUR SIDES OF THE BOARD EDGE.
6. DO NOT APPLY ANY KIND OF ASSEMBLY STAMP OR QA STAMP TO ANY BOARD.
7. INSTALL 4 STANDOFFS AT 4 LOCATIONS AS SHOWN BELOW:



UNLESS OTHERWISE SPECIFIED		APPROVALS		<div> ANALOG DEVICES</div> <div>AHEAD OF WHAT'S POSSIBLE™</div>		<div>1630 MCCARTHY BLVD MILPITAS, CA 95035 PH: (408)432-1900</div> <div>CONFIDENTIAL— FOR CUSTOMER USE ONLY</div>			
<div>DIMENSIONS ARE IN INCHES</div> <div>TOLERANCES:</div> <div>0.XX" = ±0.01"</div> <div>0.XXX" = ±0.005"</div> <div>INTERPRET DIM AND TOL PER ASME Y14.5M-1994</div> <div>THIRD ANGLE PROJECTION</div> <div></div>		PCB DES.	AK.						
		APP ENG.	PHILIP K.	TITLE: FABRICATION DRAWING					
								HIGH SPEED COMPARATOR WITH LVDS OUTPUT	
		SIZE	IC NO.	LTC6754-UD		REV			
		N/A		DC2767A		1			
		SCALE = NONE		FILENAME: DC2767A-1.PCB		SHT 1 OF 1			