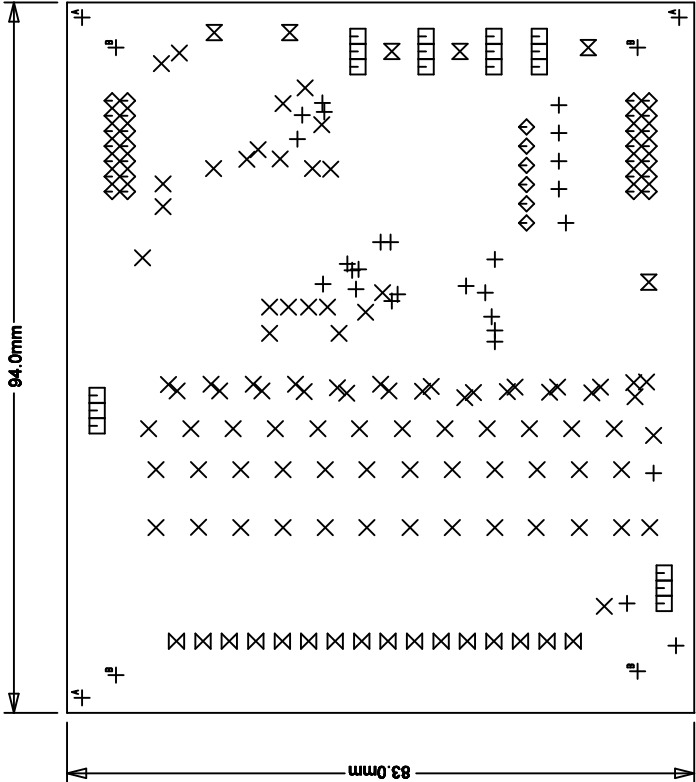
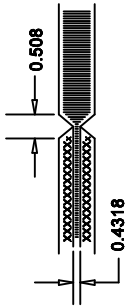


REVISION HISTORY			
ECO	REV	DESCRIPTION	DATE
	2	PRODUCTION	JON M. 07/02/10

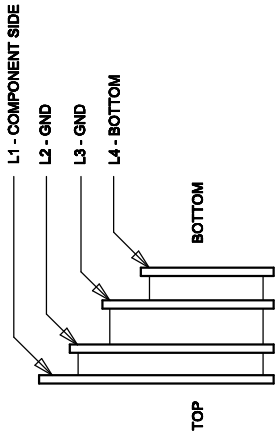
NOTES: UNLESS OTHERWISE SPECIFIED,

1. FAB PER IPC-A-600
2. MATERIAL: -EPOXY FIBERGLASS, NEMA GRADE FR-4  
-FINISHED THICKNESS TO BE 1.6 +/- 0.127  
-TOTAL OF 4 LAYERS WITH 2 OZ. CU ON THE OUTER LAYERS AND 1 OZ. CU ON THE INNER LAYERS.  
-FLAMMABILITY RATING: 94 V-0 MINIMUM .
3. SIZE: CUT TO DIMENSIONS AND TOLERANCES SHOWN.  
0.00" ARE PRIMARY DATUMS.
4. DRILLING: DRILL HOLES PER SCHEDULE. PLATE THROUGH HOLES WITH COPPER, 0.0254 THICK MIN.  
ALL HOLE SIZES ARE SPECIFIED AFTER PLATING.  
HOLE LOCATION TOLERANCES ARE +/-0.0762 IN RELATION TO CENTER
5. FINISH: -SMOBC USING LPI BOTH SIDES, COLOR GREEN.  
-GOLD IMMERSION BOTH SIDES.  
-SILKSCREEN BOTH SIDES WITH WHITE NON-CONDUCTIVE INK.
6. DO NOT ALTER ARTWORK e.g. TO ADD LOGO OR DATE CODE.  
PAD SIZE CAN BE MODIFIED TO MEET END FINISH.
7. PCBs SHALL BE RoHS COMPLIANT.
8. SCORING:

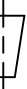


COMPONENT SIDE SHOWN

SIZE	QTY	SYM	PLATED	TOL
0.25	27	+	YES	+/-0.08
0.5	86	X	YES	+/-0.08
0.76	18	□	YES	+/-0.08
0.89	34	◇	YES	+/-0.08
1.4	16	⊗	YES	+/-0.08
1.63	6	⊗	YES	+/-0.13
1.78	3	⊕	NO	+/-0.13
4.75	4	⊕	NO	+/-0.13



LAYER CONSTRUCTION

<div>UNLESS OTHERWISE SPECIFIED DIMENSIONS ARE IN MILLIMETERS TOLERANCES ON ANGLE ±1° XX ± 0.254 XXX ± 0.127 INTERPRET DIM AND TOL PER ASME Y14.5M/1994</div>		APPROVALS		<div>1630 MCCARTHY BLVD MILPITAS, CA 95035 PH: (408)432-1800 WWW.linear.com LTC CONFIDENTIAL FOR CUSTOMER USE ONLY</div>			
		PCB DES.	MI				
		APP. ENG.	JON M.	<div>TITLE: FABRICATION DRAWING; 12-CELL BATTERY STACK MONITOR</div>			
THIRD ANGLE PROJECTION							
<div></div>				SIZE	IC NO	REV	
				N/A	LTC6803IG-3	2	
DO NOT SCALE DRAWING		SCALE: NONE		FILENAME: 1653A-2.PCB		SHT 1 of 1	