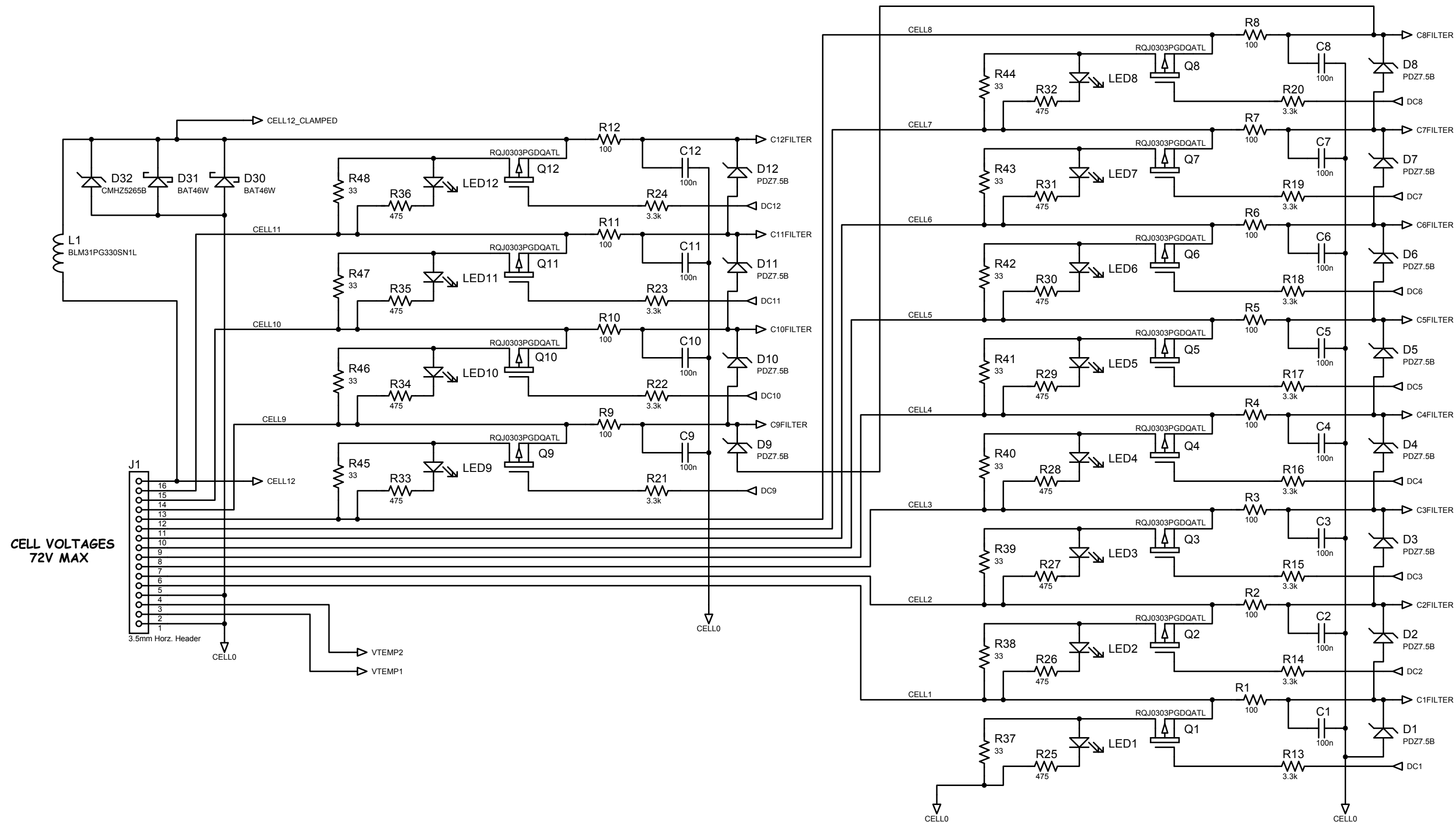


**NOTES: UNLESS OTHERWISE SPECIFIED**

1. ALL RESISTORS ARE IN OHMS
2. ALL CAPACTORS ARE IN FARADS
3. INSTALL SHUNTS AT JP1-JP9 AS SHOWN



**Customer Notice:**

Linear Technology has made a best effort to design a circuit that meets customer-supplied specifications; however, it remains the customer's responsibility to verify proper and reliable operation in the actual application. Component substitution and printed circuit layout may significantly affect circuit performance or reliability. Contact Linear Technology Applications Engineering for assistance.

This circuit is proprietary to Linear Technology and supplied for use with Linear Technology parts.



1630 McCarthy Blvd.  
Milpitas, CA 95035  
PH: (408) 432-1900

**DC1652A DEMO BOARD SCHEMATIC**

**LTC6803IG-2 12-CELL BATTERY MONITOR**

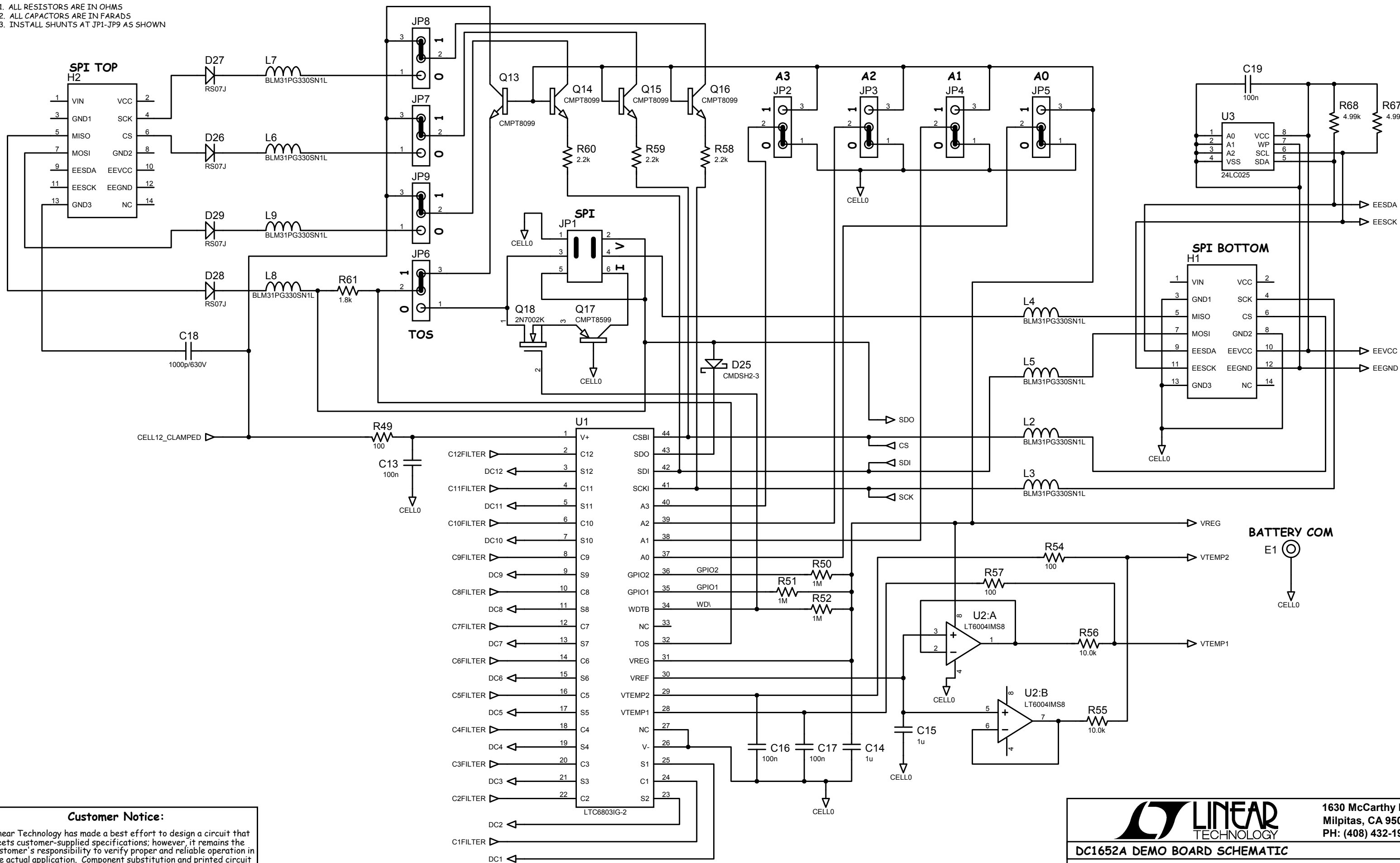
**Sourcefile: DC1652A.DSN**

**J. Munson 6/18/2010**

**SH 1 of 3**

**NOTES: UNLESS OTHERWISE SPECIFIED**

1. ALL RESISTORS ARE IN OHMS
2. ALL CAPACTORS ARE IN FARADS
3. INSTALL SHUNTS AT JP1-JP9 AS SHOWN



**Customer Notice:**

Linear Technology has made a best effort to design a circuit that meets customer-supplied specifications; however, it remains the customer's responsibility to verify proper and reliable operation in the actual application. Component substitution and printed circuit layout may significantly affect circuit performance or reliability. Contact Linear Technology Applications Engineering for assistance.

This circuit is proprietary to Linear Technology and supplied for use with Linear Technology parts.



1630 McCarthy Blvd.  
Milpitas, CA 95035  
PH: (408) 432-1900

**DC1652A DEMO BOARD SCHEMATIC**

**LTC6803IG-2 12-CELL BATTERY MONITOR**

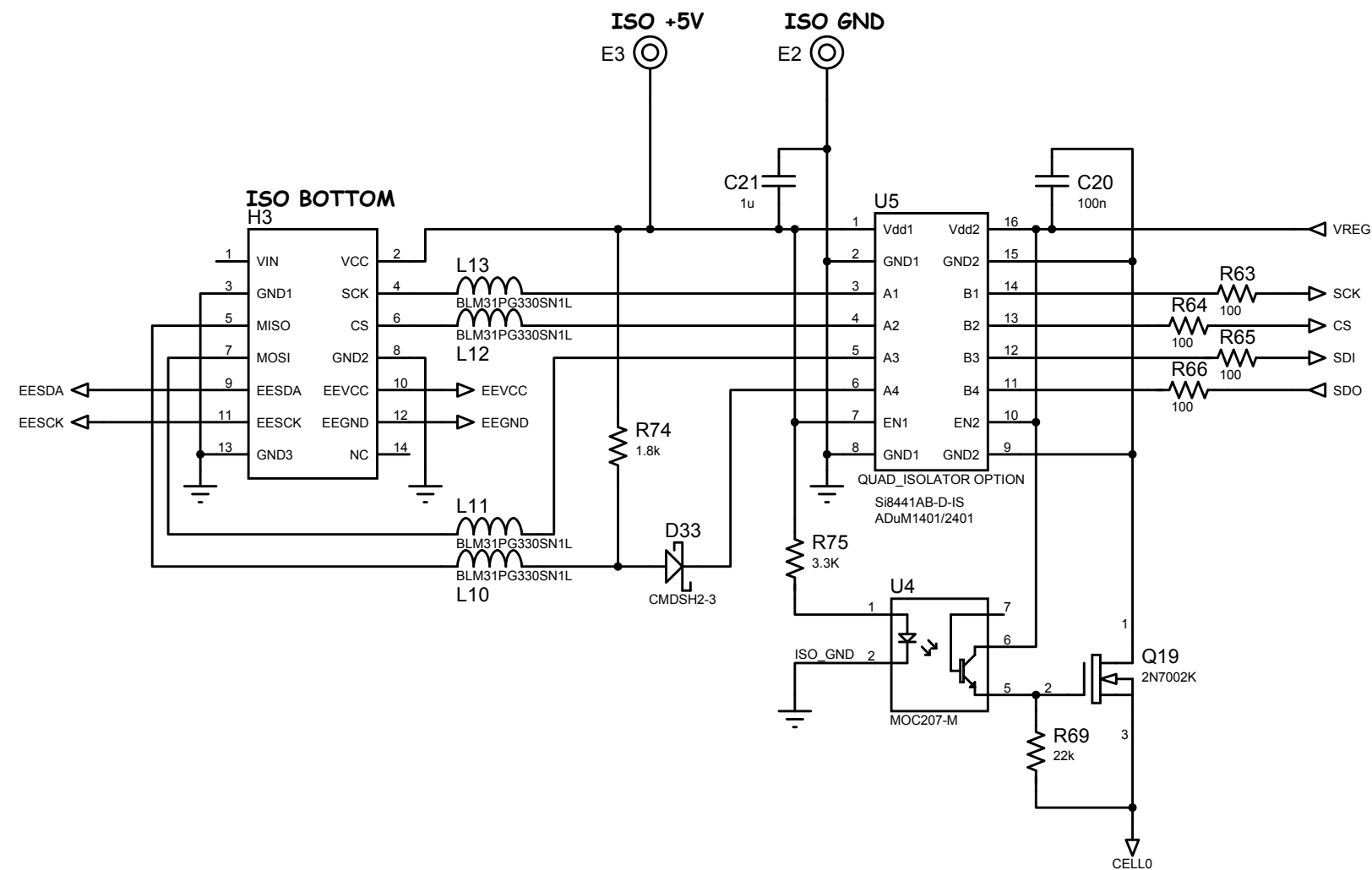
Sourcefile: DC1652A.DSN

J. Munson 6/18/2010

SH 2 of 3

**NOTES: UNLESS OTHERWISE SPECIFIED**

1. ALL RESISTORS ARE IN OHMS
2. ALL CAPACTORS ARE IN FARADS
3. INSTALL SHUNTS AT JP1-JP9 AS SHOWN



**Customer Notice:**

Linear Technology has made a best effort to design a circuit that meets customer-supplied specifications; however, it remains the customer's responsibility to verify proper and reliable operation in the actual application. Component substitution and printed circuit layout may significantly affect circuit performance or reliability. Contact Linear Technology Applications Engineering for assistance.

This circuit is proprietary to Linear Technology and supplied for use with Linear Technology parts.



1630 McCarthy Blvd.  
Milpitas, CA 95035  
PH: (408) 432-1900

**DC1652A DEMO BOARD SCHEMATIC**

**LTC6803IG-2 12-CELL BATTERY MONITOR**

Sourcefile: DC1652A.DSN

J. Munson 6/18/2010

SH 3 of 3